

## Product datasheet for **TA367146**

### NDUFA4 Rabbit Polyclonal Antibody

#### Product data:

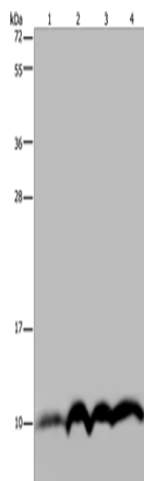
Product Type:	Primary Antibodies
Applications:	IHC, WB
Recommended Dilution:	WB: 500-2000 WB positive control: SKOV3 cells and human fetal liver tissue, human fetal brain tissue and HeLa cells IHC: 50-200 Positive control: Human colon cancer Predicted cell location: Cytoplasm
Reactivity:	Human, Mouse
Host:	Rabbit
Isotype:	IgG
Clonality:	Polyclonal
Immunogen:	Synthetic peptide of human NDUFA4
Formulation:	pH7.4 PBS, 0.05% NaN <sub>3</sub> , 40% Glycerol
Concentration:	lot specific
Purification:	Antigen affinity purification
Conjugation:	Unconjugated
Storage:	Store at -20°C.
Stability:	1 year
Predicted Protein Size:	9 kDa
Gene Name:	NDUFA4, mitochondrial complex associated
Database Link:	<a href="#">Entrez Gene 4697 Human O00483</a>
Background:	The protein encoded by this gene belongs to the complex I 9kDa subunit family. Mammalian complex I of mitochondrial respiratory chain is composed of 45 different subunits. This protein has NADH dehydrogenase activity and oxidoreductase activity. It transfers electrons from NADH to the respiratory chain. The immediate electron acceptor for the enzyme is believed to be ubiquinone.



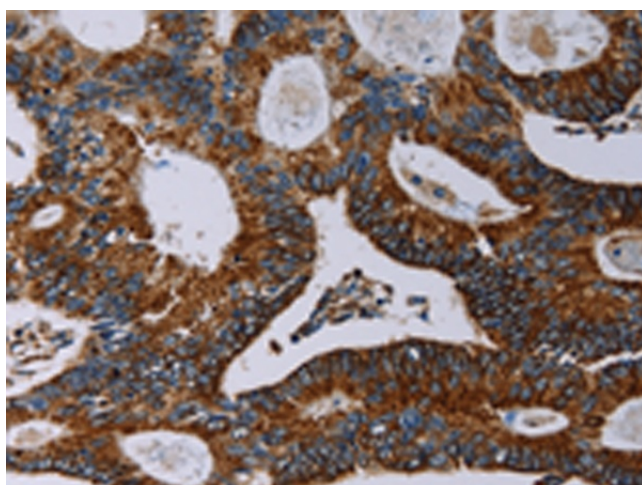
[View online »](#)

Synonyms: CI-MLRQ; FLJ27440; MGC104422; MGC126843; MGC126845; MLRQ

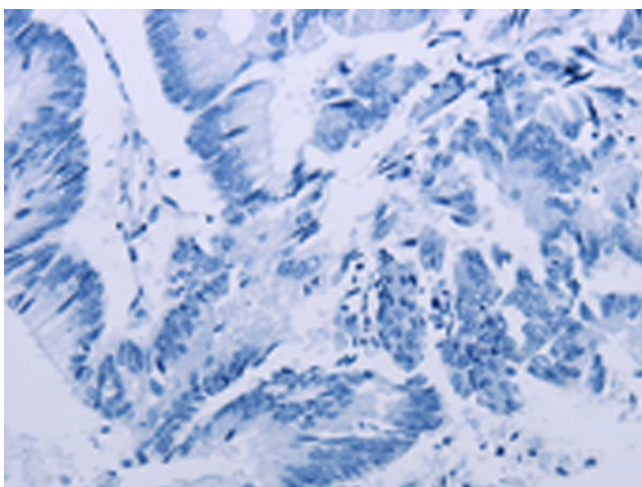
### Product images:



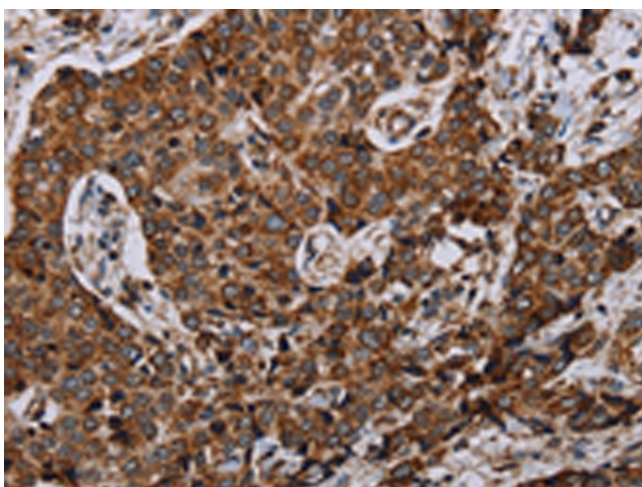
Gel: 10%SDS-PAGE  
Lysate: 40 µg  
Lane 1-4: SKOV3 cells  
human fetal liver tissue  
human fetal brain tissue  
Hela cells  
Primary antibody: TA367146 (NDUFA4 Antibody)  
at dilution 1/300  
Secondary antibody: Goat anti rabbit IgG at  
1/8000 dilution  
Exposure time: 20 seconds



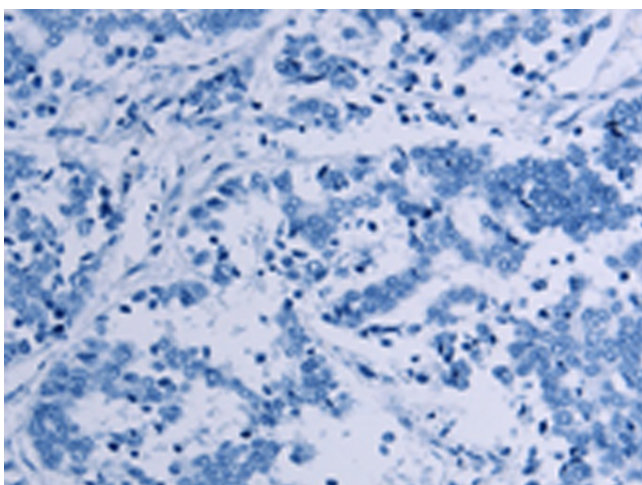
Immunohistochemistry of paraffin-embedded  
Human colon cancer tissue using TA367146  
(NDUFA4 Antibody) at dilution 1/40 (Original  
magnification: ×200)



Immunohistochemistry of paraffin-embedded Human colon cancer tissue using TA367146 (NDUFA4 Antibody) at dilution 1/40, treated with synthetic peptide. (Original magnification: ×200)



Immunohistochemistry of paraffin-embedded Human liver cancer tissue using TA367146 (NDUFA4 Antibody) at dilution 1/40 (Original magnification: ×200)



Immunohistochemistry of paraffin-embedded Human liver cancer tissue using TA367146 (NDUFA4 Antibody) at dilution 1/40, treated with synthetic peptide. (Original magnification: ×200)