

Product datasheet for **TA367138S**

MOBK1B (MOB1A) Rabbit Polyclonal Antibody

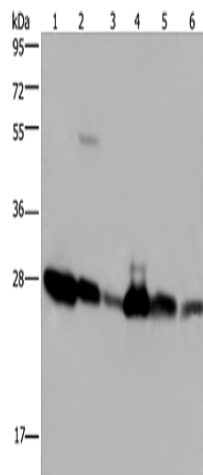
Product data:

Product Type:	Primary Antibodies
Applications:	IHC, WB
Recommended Dilution:	WB: 500-2000 WB positive control: A375 and K562 cells, mouse liver tissue and Raji cells, Jurkat and HeLa cells IHC: 25-100 Positive control: Human brain Predicted cell location: Cytoplasm and Nucleus
Reactivity:	Human, Mouse, Rat
Host:	Rabbit
Isotype:	IgG
Clonality:	Polyclonal
Immunogen:	Synthetic peptide of human MOB1A
Formulation:	pH7.4 PBS, 0.05% NaN ₃ , 40% Glycerol
Purification:	Antigen affinity purification
Conjugation:	Unconjugated
Storage:	Store at -20°C.
Stability:	1 year
Predicted Protein Size:	25 kDa
Gene Name:	MOB kinase activator 1A
Database Link:	Entrez Gene 55233 Human Q9H8S9
Background:	MOB1 was first identified in yeast as a protein that binds to Mps with essential roles in the completion of mitosis and the maintenance of ploidy . Its Drosophila and mammalian homologs, Mats and MOB1, respectively, are involved in the Hippo signaling tumor suppressor pathway, which plays a critical role in organ size regulation and which has been implicated in cancer development .
Synonyms:	4022402H07Rik; MOB1; MOB4B; Mobk1b; Mobk11b

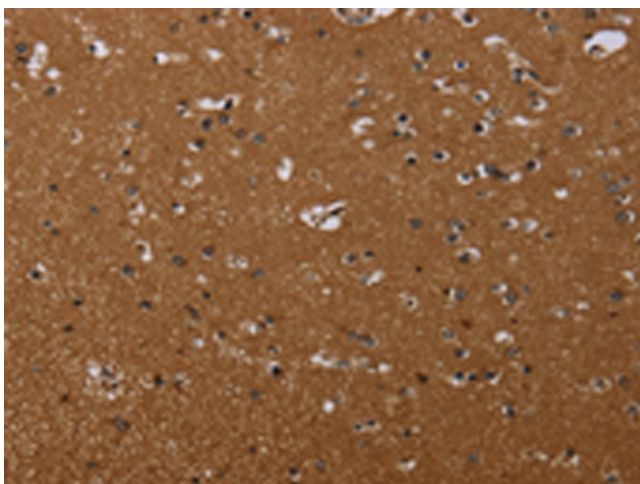


[View online »](#)

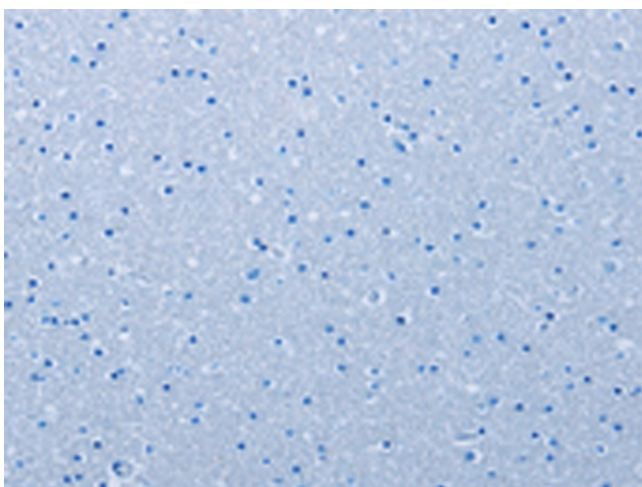
Product images:



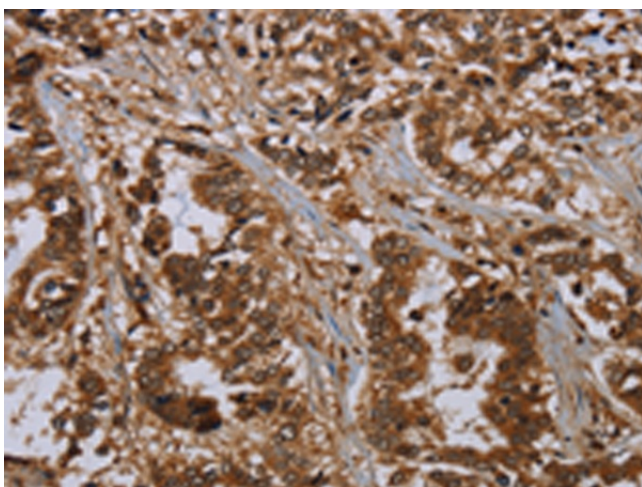
Gel: 10%SDS-PAGE
Lysate: 40 μ g
Lane 1-6: A375 cells
K562 cells
mouse liver tissue
Raji cells
Jurkat cells
Hela cells
Primary antibody: [TA367138] (MOB1A Antibody) at dilution 1/200
Secondary antibody: Goat anti rabbit IgG at 1/8000 dilution
Exposure time: 10 seconds



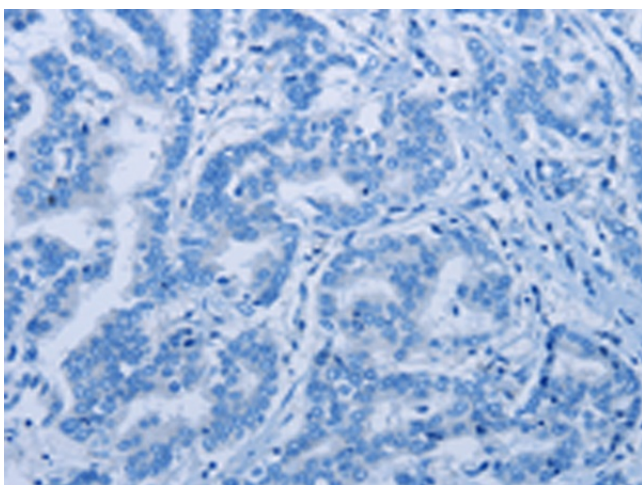
Immunohistochemistry of paraffin-embedded Human brain tissue using [TA367138] (MOB1A Antibody) at dilution 1/20 (Original magnification: \times 200)



Immunohistochemistry of paraffin-embedded Human brain tissue using [TA367138] (MOB1A Antibody) at dilution 1/20, treated with synthetic peptide. (Original magnification: $\times 200$)



Immunohistochemistry of paraffin-embedded Human liver cancer tissue using [TA367138] (MOB1A Antibody) at dilution 1/20 (Original magnification: $\times 200$)



Immunohistochemistry of paraffin-embedded Human liver cancer tissue using [TA367138] (MOB1A Antibody) at dilution 1/20, treated with synthetic peptide. (Original magnification: $\times 200$)