

Product datasheet for **TA367138**

MOBK1B (MOB1A) Rabbit Polyclonal Antibody

Product data:

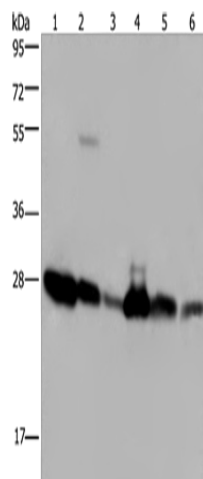
| | |
|--------------------------------|--|
| Product Type: | Primary Antibodies |
| Applications: | IHC, WB |
| Recommended Dilution: | WB: 500-2000 WB positive control: A375 and K562 cells, mouse liver tissue and Raji cells, Jurkat and HeLa cells IHC: 25-100 Positive control: Human brain Predicted cell location: Cytoplasm and Nucleus |
| Reactivity: | Human, Mouse, Rat |
| Host: | Rabbit |
| Isotype: | IgG |
| Clonality: | Polyclonal |
| Immunogen: | Synthetic peptide of human MOB1A |
| Formulation: | pH7.4 PBS, 0.05% NaN ₃ , 40% Glycerol |
| Concentration: | lot specific |
| Purification: | Antigen affinity purification |
| Conjugation: | Unconjugated |
| Storage: | Store at -20°C. |
| Stability: | 1 year |
| Predicted Protein Size: | 25 kDa |
| Gene Name: | MOB kinase activator 1A |
| Database Link: | Entrez Gene 55233 Human Q9H8S9 |
| Background: | MOB1 was first identified in yeast as a protein that binds to Mps with essential roles in the completion of mitosis and the maintenance of ploidy . Its Drosophila and mammalian homologs, Mats and MOB1, respectively, are involved in the Hippo signaling tumor suppressor pathway, which plays a critical role in organ size regulation and which has been implicated in cancer development . |



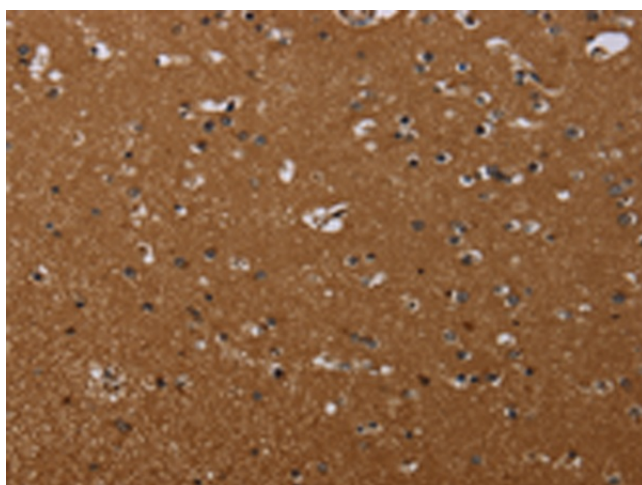
[View online »](#)

Synonyms: 4022402H07Rik; MOB1; MOB4B; Mobk1b; Mobkl1b

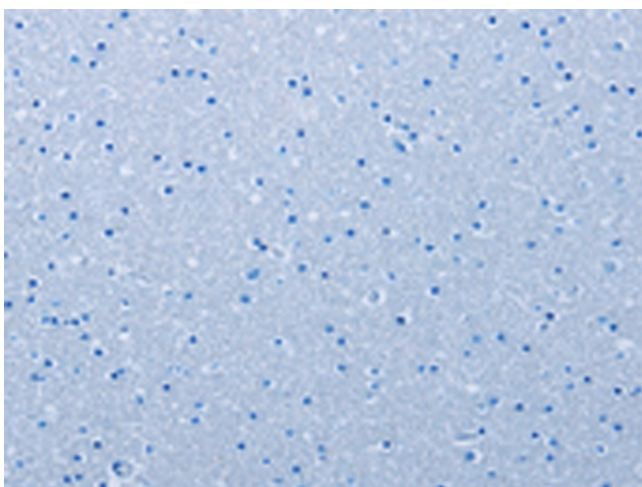
Product images:



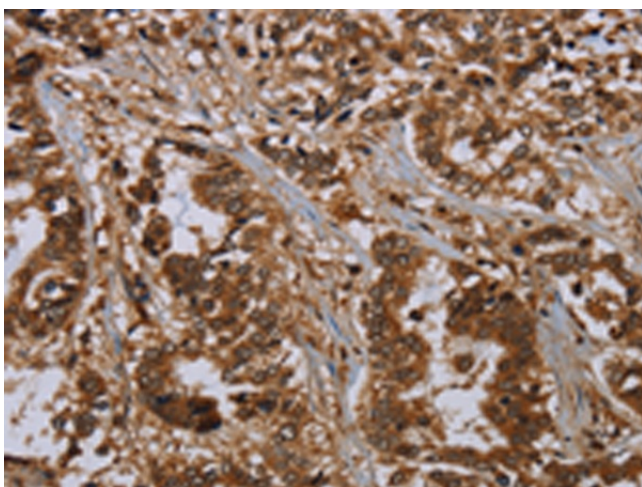
Gel: 10%SDS-PAGE
 Lysate: 40 µg
 Lane 1-6: A375 cells
 K562 cells
 mouse liver tissue
 Raji cells
 Jurkat cells
 Hela cells
 Primary antibody: TA367138 (MOB1A Antibody)
 at dilution 1/200
 Secondary antibody: Goat anti rabbit IgG at
 1/8000 dilution
 Exposure time: 10 seconds



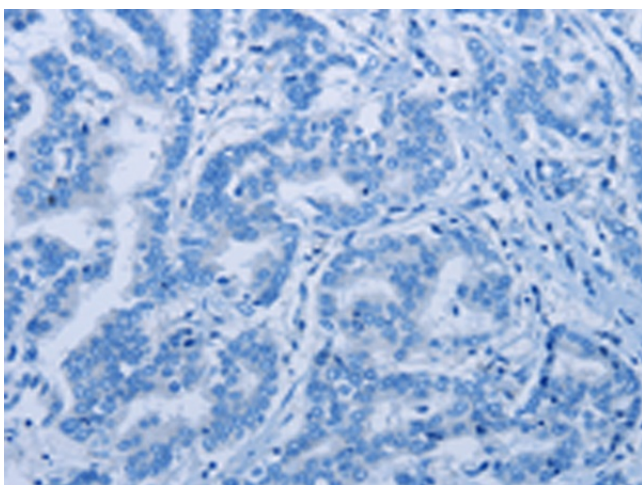
Immunohistochemistry of paraffin-embedded
 Human brain tissue using TA367138 (MOB1A
 Antibody) at dilution 1/20 (Original magnification:
 ×200)



Immunohistochemistry of paraffin-embedded Human brain tissue using TA367138 (MOB1A Antibody) at dilution 1/20, treated with synthetic peptide. (Original magnification: $\times 200$)



Immunohistochemistry of paraffin-embedded Human liver cancer tissue using TA367138 (MOB1A Antibody) at dilution 1/20 (Original magnification: $\times 200$)



Immunohistochemistry of paraffin-embedded Human liver cancer tissue using TA367138 (MOB1A Antibody) at dilution 1/20, treated with synthetic peptide. (Original magnification: $\times 200$)