

Product datasheet for **TA367135**

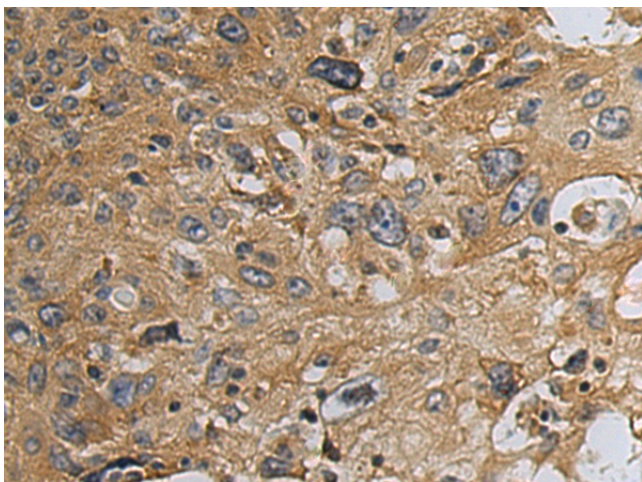
ERRFI1 Rabbit Polyclonal Antibody

Product data:

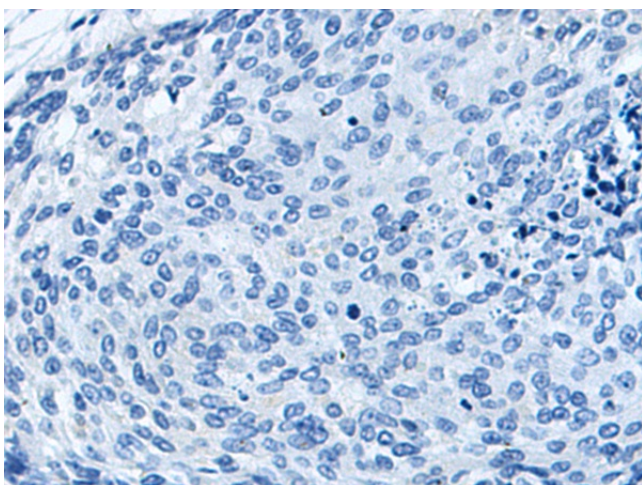
Product Type:	Primary Antibodies
Applications:	IHC
Recommended Dilution:	IHC: 50-100 Positive control: Human cervical cancer Predicted cell location: Cytoplasm
Reactivity:	Human
Host:	Rabbit
Isotype:	IgG
Clonality:	Polyclonal
Immunogen:	Synthetic peptide of human ERRFI1
Formulation:	pH7.4 PBS, 0.05% NaN ₃ , 40% Glycerol
Concentration:	lot specific
Purification:	Antigen affinity purification
Conjugation:	Unconjugated
Storage:	Store at -20°C.
Stability:	1 year
Gene Name:	ERBB receptor feedback inhibitor 1
Database Link:	Entrez Gene 54206 Human Q9UJM3
Background:	ERRFI1 is a cytoplasmic protein whose expression is upregulated with cell growth. It shares significant homology with the protein product of rat gene-33, which is induced during cell stress and mediates cell signaling.
Synonyms:	GENE-33; MIG-6; MIG6; RALT



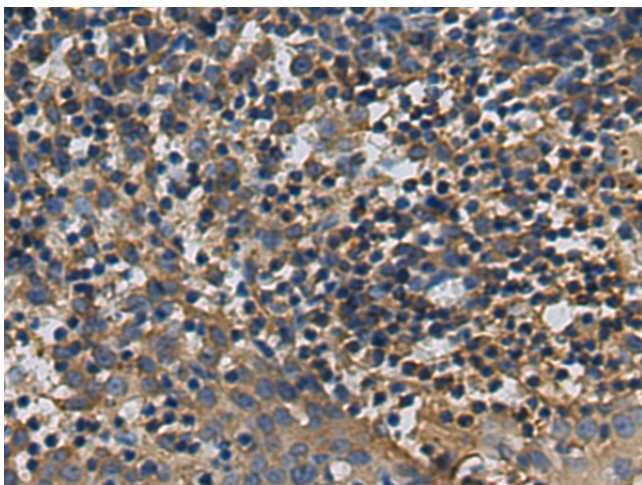
[View online »](#)

Product images:

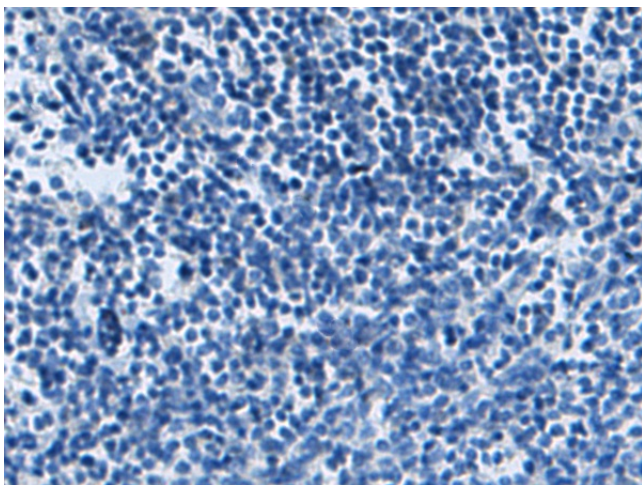
Immunohistochemistry of paraffin-embedded Human cervical cancer tissue using TA367135 (ERRFI1 Antibody) at dilution 1/40 (Original magnification: $\times 200$)



Immunohistochemistry of paraffin-embedded Human cervical cancer tissue using TA367135 (ERRFI1 Antibody) at dilution 1/40, treated with synthetic peptide. (Original magnification: $\times 200$)



Immunohistochemistry of paraffin-embedded Human tonsil tissue using TA367135 (ERRF1 Antibody) at dilution 1/40 (Original magnification: ×200)



Immunohistochemistry of paraffin-embedded Human tonsil tissue using TA367135 (ERRF1 Antibody) at dilution 1/40, treated with synthetic peptide. (Original magnification: ×200)