

## Product datasheet for **TA367127S**

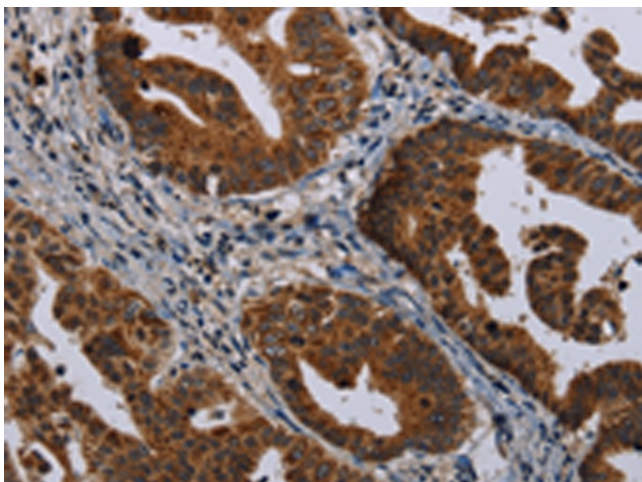
### **MAGEB3 Rabbit Polyclonal Antibody**

#### **Product data:**

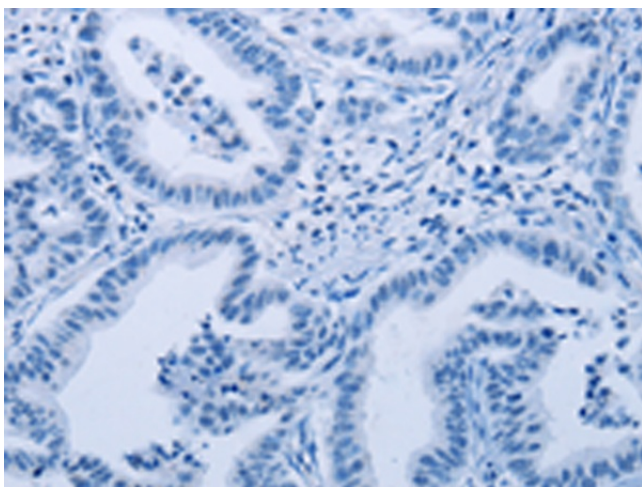
Product Type:	Primary Antibodies
Applications:	IHC
Recommended Dilution:	IHC: 25-100 Positive control: Human gastric cancer Predicted cell location: Cytoplasm
Reactivity:	Human
Host:	Rabbit
Isotype:	IgG
Clonality:	Polyclonal
Immunogen:	Synthetic peptide of human MAGEB3
Formulation:	pH7.4 PBS, 0.05% NaN <sub>3</sub> , 40% Glycerol
Purification:	Antigen affinity purification
Conjugation:	Unconjugated
Storage:	Store at -20°C.
Stability:	1 year
Gene Name:	MAGE family member B3
Database Link:	<a href="#">Entrez Gene 4114 Human O15480</a>
Background:	This gene is a MAGE-B subfamily member of the MAGE gene family. MAGE family member proteins direct the expression of tumor antigens recognized on a human melanoma by autologous cytolytic T lymphocytes. There are two known clusters of MAGE genes on chromosome X. The members of the MAGE-A subfamily are located in the Xq28 region, while the members of the MAGE-B subfamily are clustered in the Xp21 region.
Synonyms:	CT3.5; OTTHUMP00000023099



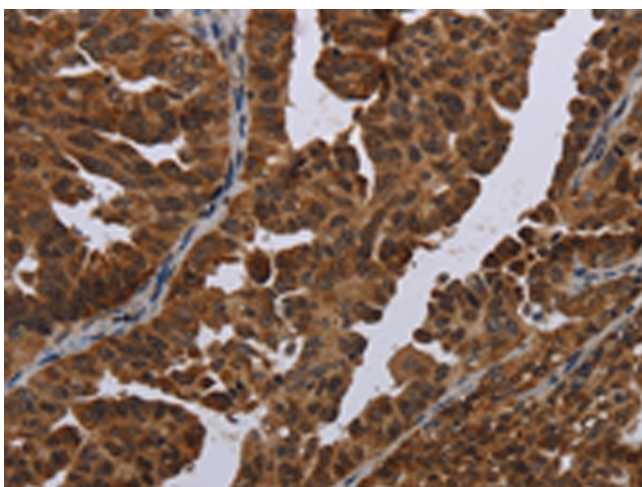
[View online »](#)

**Product images:**

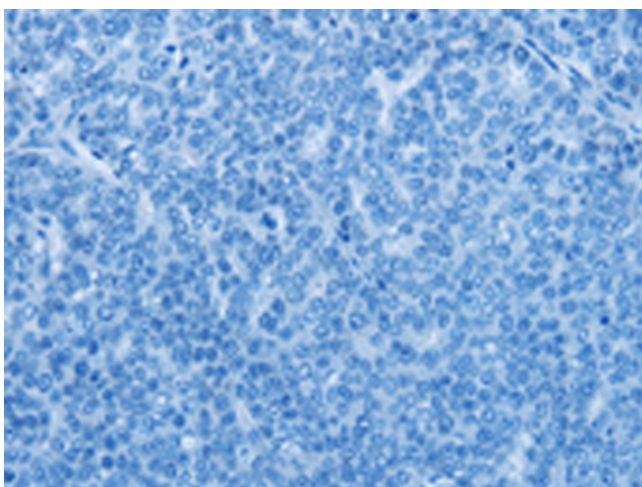
Immunohistochemistry of paraffin-embedded Human gastric cancer tissue using [TA367127] (MAGEB3 Antibody) at dilution 1/20 (Original magnification:  $\times 200$ )



Immunohistochemistry of paraffin-embedded Human gastric cancer tissue using [TA367127] (MAGEB3 Antibody) at dilution 1/20, treated with synthetic peptide. (Original magnification:  $\times 200$ )



Immunohistochemistry of paraffin-embedded Human ovarian cancer tissue using [TA367127] (MAGEB3 Antibody) at dilution 1/20 (Original magnification:  $\times 200$ )



Immunohistochemistry of paraffin-embedded Human ovarian cancer tissue using [TA367127] (MAGEB3 Antibody) at dilution 1/20, treated with synthetic peptide. (Original magnification:  $\times 200$ )