

## Product datasheet for **TA367126**

### **MAG1 (GPAT3) Rabbit Polyclonal Antibody**

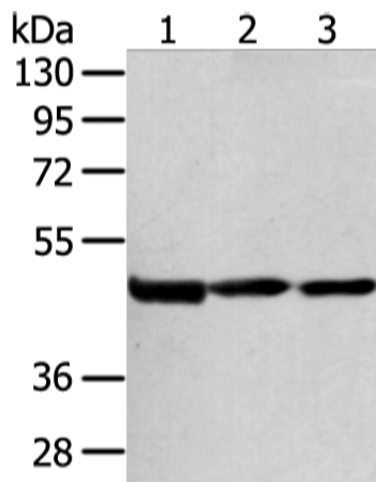
#### **Product data:**

Product Type:	Primary Antibodies
Applications:	WB
Recommended Dilution:	WB: 500-2000 WB positive control: Hela cell and human bladder carcinoma tissue, human normal liver tissue
Reactivity:	Human, Mouse
Host:	Rabbit
Isotype:	IgG
Clonality:	Polyclonal
Immunogen:	Synthetic peptide of human GPAT3
Formulation:	pH7.4 PBS, 0.05% NaN <sub>3</sub> , 40% Glycerol
Concentration:	lot specific
Purification:	Antigen affinity purification
Conjugation:	Unconjugated
Storage:	Store at -20°C.
Stability:	1 year
Predicted Protein Size:	49 kDa
Gene Name:	glycerol-3-phosphate acyltransferase 3
Database Link:	<a href="#">Entrez Gene 84803 Human Q53EU6</a>
Background:	This gene encodes a member of the lysophosphatidic acid acyltransferase protein family. The encoded protein is an enzyme which catalyzes the conversion of glycerol-3-phosphate to lysophosphatidic acid in the synthesis of triacylglycerol. Multiple alternatively spliced variants, encoding the same protein, have been identified. [provided by RefSeq, Jan 2012]



[View online »](#)

## Product images:



Gel: 8%SDS-PAGE

Lysate: 80  $\mu$ g

Lane 1-3: HeLa cell and human bladder carcinoma tissue

human normal liver tissue

Primary antibody: TA367126 (GPAT3 Antibody) at dilution 1/200

Secondary antibody: Goat anti rabbit IgG at 1/8000 dilution

Exposure time: 15 seconds