

## Product datasheet for **TA367118S**

### Ceramide synthase 1 (CERS1) Rabbit Polyclonal Antibody

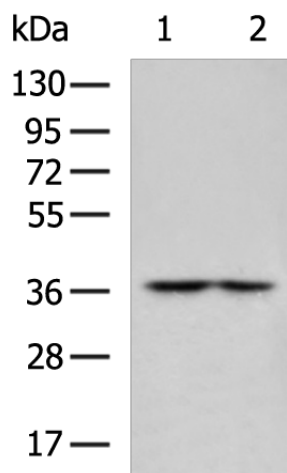
#### Product data:

Product Type:	Primary Antibodies
Applications:	WB
Recommended Dilution:	WB: 500-2000 WB positive control: A172 and PC-3 cell lysates
Reactivity:	Human, Mouse
Host:	Rabbit
Isotype:	IgG
Clonality:	Polyclonal
Immunogen:	Synthetic peptide of human CERS1
Formulation:	pH7.4 PBS, 0.05% NaN <sub>3</sub> , 40% Glycerol
Purification:	Antigen affinity purification
Conjugation:	Unconjugated
Storage:	Store at -20°C.
Stability:	1 year
Predicted Protein Size:	40 kDa
Gene Name:	ceramide synthase 1
Database Link:	<a href="#">Entrez Gene 10715 Human P27544</a>
Background:	This gene encodes a ceramide synthase enzyme, which catalyzes the synthesis of ceramide, the hydrophobic moiety of sphingolipids. The encoded enzyme synthesizes 18-carbon (C18) ceramide in brain neurons. Elevated expression of this gene may be associated with increased longevity, while decreased expression of this gene may be associated with myoclonus epilepsy with dementia in human patients. This protein is transcribed from a monocistronic mRNA as well as a bicistronic mRNA, which also encodes growth differentiation factor 1.
Synonyms:	LAG1; LASS1; UOG1



[View online »](#)

## Product images:



Gel: 8%SDS-PAGE  
Lysate: 40  $\mu$ g  
Lane 1-2: A172 and PC-3 cell lysates  
Primary antibody: [TA367118] (CERS1 Antibody)  
at dilution 1/500  
Secondary antibody: Goat anti rabbit IgG at  
1/5000 dilution  
Exposure time: 1 minute