

## Product datasheet for **TA367093**

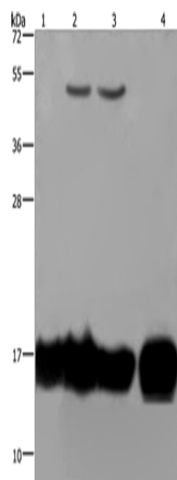
### IL17C Rabbit Polyclonal Antibody

#### Product data:

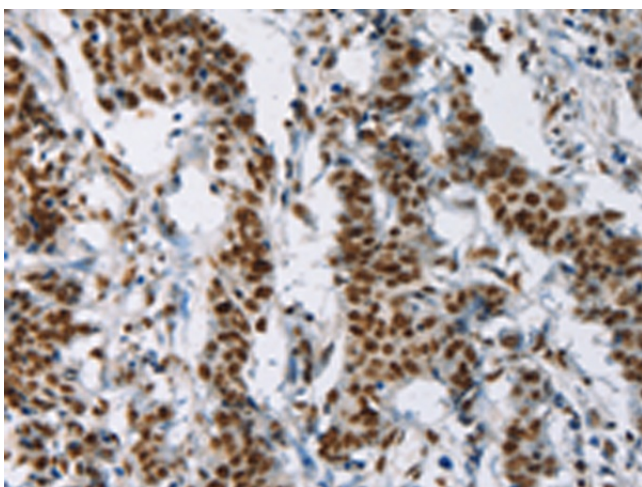
Product Type:	Primary Antibodies
Applications:	IHC, WB
Recommended Dilution:	WB: 500-2000 WB positive control: A549 and K562 cells, Raji cells and human fetal intestine tissue IHC: 50-200 Positive control: Human gastric cancer Predicted cell location: Secreted
Reactivity:	Human
Host:	Rabbit
Isotype:	IgG
Clonality:	Polyclonal
Immunogen:	Synthetic peptide of human IL17C
Formulation:	pH7.4 PBS, 0.05% NaN <sub>3</sub> , 40% Glycerol
Concentration:	lot specific
Purification:	Antigen affinity purification
Conjugation:	Unconjugated
Storage:	Store at -20°C.
Stability:	1 year
Predicted Protein Size:	22 kDa
Gene Name:	interleukin 17C
Database Link:	<a href="#">Entrez Gene 27189 Human Q9P0M4</a>
Background:	The protein encoded by this gene is a T cell-derived cytokine that shares the sequence similarity with IL17. This cytokine was reported to stimulate the release of tumor necrosis factor alpha and interleukin 1 beta from a monocytic cell line. The expression of this cytokine was found to be restricted to activated T cells.
Synonyms:	CX2; IL-17C; IL-21; MGC126884; MGC138401



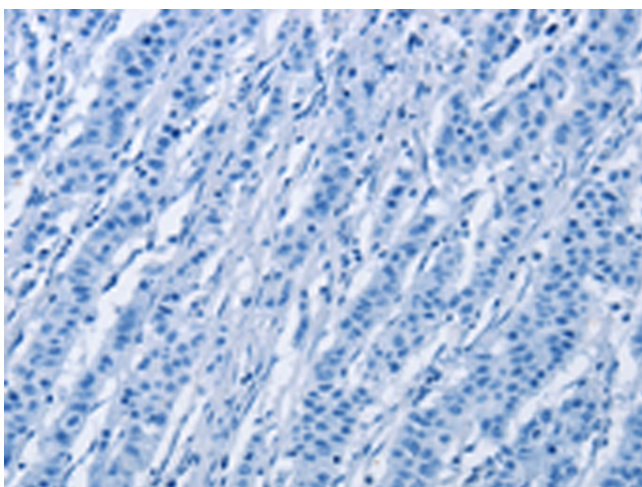
[View online »](#)

**Product images:**

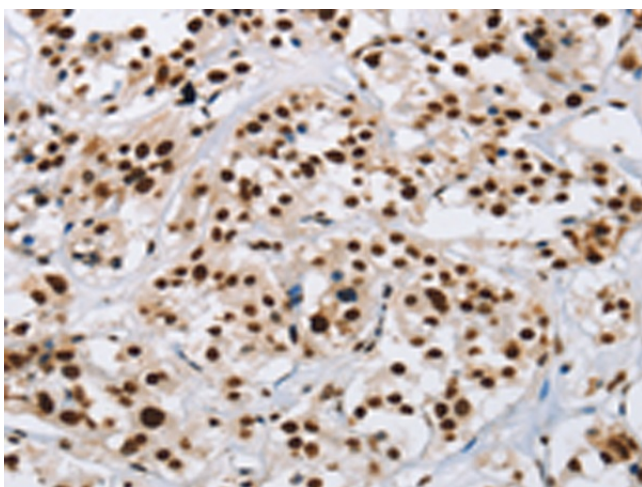
Gel: 10%SDS-PAGE  
Lysate: 40  $\mu$ g  
Lane 1-4: A549 cells  
K562 cells  
Raji cells  
human fetal intestine tissue  
Primary antibody: TA367093 (IL17C Antibody) at dilution 1/250  
Secondary antibody: Goat anti rabbit IgG at 1/8000 dilution  
Exposure time: 20 seconds



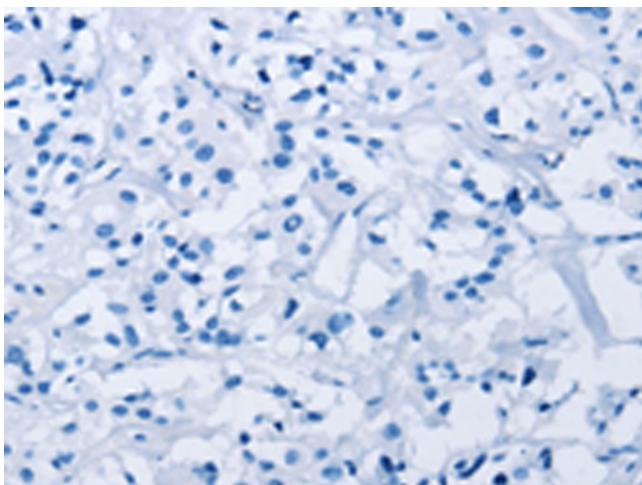
Immunohistochemistry of paraffin-embedded Human gastric cancer tissue using TA367093 (IL17C Antibody) at dilution 1/50 (Original magnification:  $\times 200$ )



Immunohistochemistry of paraffin-embedded Human gastric cancer tissue using TA367093 (IL17C Antibody) at dilution 1/50, treated with synthetic peptide. (Original magnification: x200)



Immunohistochemistry of paraffin-embedded Human thyroid cancer tissue using TA367093 (IL17C Antibody) at dilution 1/50 (Original magnification: x200)



Immunohistochemistry of paraffin-embedded Human thyroid cancer tissue using TA367093 (IL17C Antibody) at dilution 1/50, treated with synthetic peptide. (Original magnification: x200)