

Product datasheet for **TA367090**

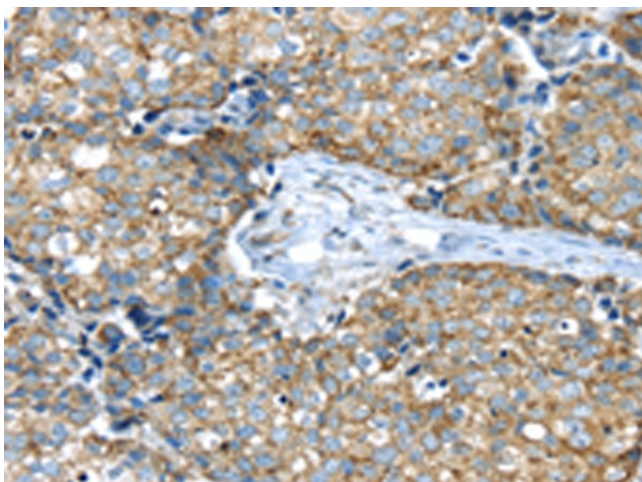
Interferon alpha 2 (IFNA2) Rabbit Polyclonal Antibody

Product data:

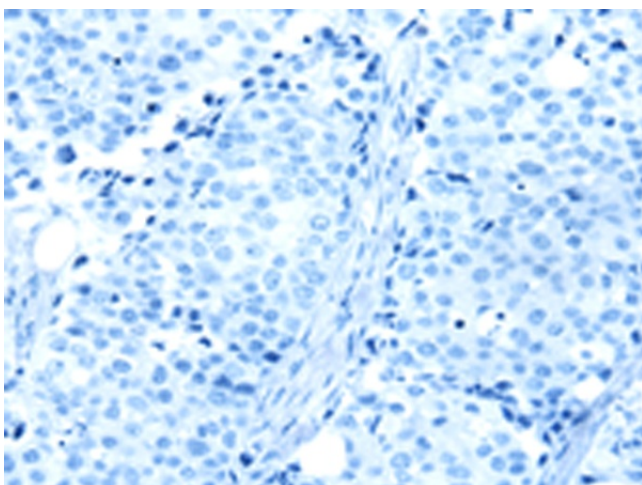
| | |
|-----------------------|---|
| Product Type: | Primary Antibodies |
| Applications: | IHC |
| Recommended Dilution: | IHC: 50-200 Positive control: Human gastric cancer Predicted cell location: Cytoplasm |
| Reactivity: | Human |
| Host: | Rabbit |
| Isotype: | IgG |
| Clonality: | Polyclonal |
| Immunogen: | Synthetic peptide of human IFNA2 |
| Formulation: | pH7.4 PBS, 0.05% NaN ₃ , 40% Glycerol |
| Concentration: | lot specific |
| Purification: | Antigen affinity purification |
| Conjugation: | Unconjugated |
| Storage: | Store at -20°C. |
| Stability: | 1 year |
| Gene Name: | interferon, alpha 2 |
| Database Link: | Entrez Gene 3440 Human P01563 |
| Background: | This gene is a member of the alpha interferon gene cluster on chromosome 9. The encoded protein is a cytokine produced in response to viral infection. Use of the recombinant form of this protein has been shown to be effective in reducing the symptoms and duration of the common cold. |
| Synonyms: | IFNA; INFA2; MGC125764; MGC125765 |



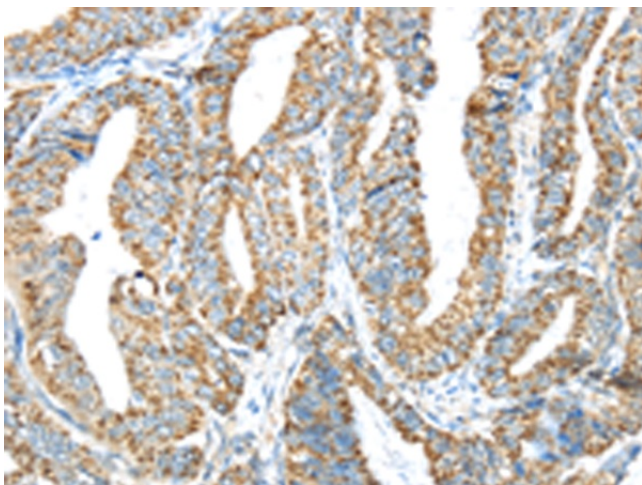
[View online »](#)

Product images:

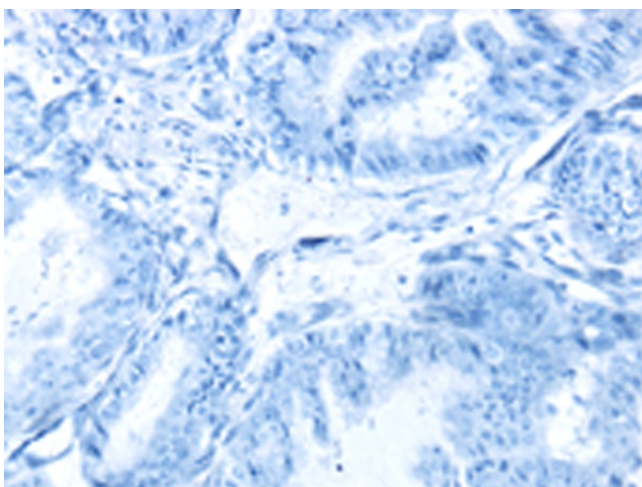
Immunohistochemistry of paraffin-embedded Human gastric cancer tissue using TA367090 (IFNA2 Antibody) at dilution 1/40 (Original magnification: ×200)



Immunohistochemistry of paraffin-embedded Human gastric cancer tissue using TA367090 (IFNA2 Antibody) at dilution 1/40, treated with synthetic peptide. (Original magnification: ×200)



Immunohistochemistry of paraffin-embedded Human colon cancer tissue using TA367090 (IFNA2 Antibody) at dilution 1/40 (Original magnification: $\times 200$)



Immunohistochemistry of paraffin-embedded Human colon cancer tissue using TA367090 (IFNA2 Antibody) at dilution 1/40, treated with synthetic peptide. (Original magnification: $\times 200$)