

## Product datasheet for **TA367084**

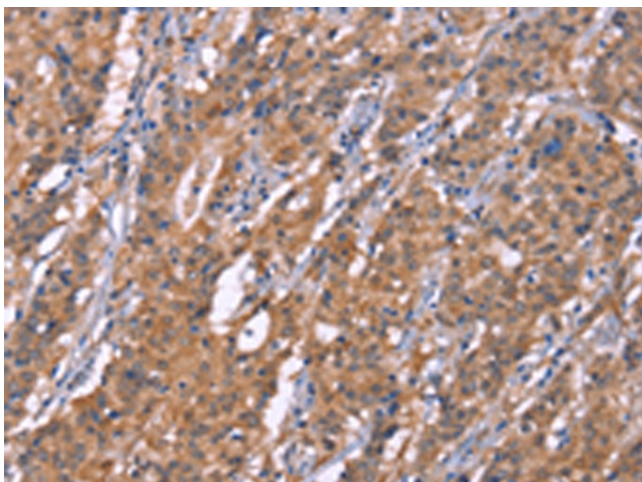
### PLAAT2 Rabbit Polyclonal Antibody

#### Product data:

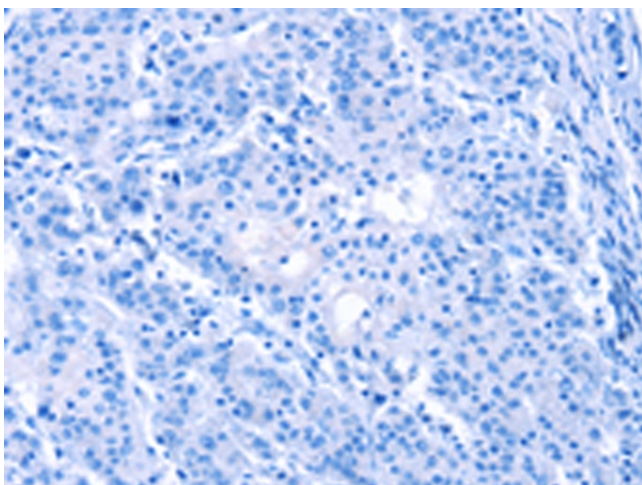
Product Type:	Primary Antibodies
Applications:	IHC
Recommended Dilution:	IHC: 50-200 Positive control: Human gastric cancer Predicted cell location: Cytoplasm
Reactivity:	Human
Host:	Rabbit
Isotype:	IgG
Clonality:	Polyclonal
Immunogen:	Synthetic peptide of human PLAAT2
Formulation:	pH7.4 PBS, 0.05% NaN <sub>3</sub> , 40% Glycerol
Concentration:	lot specific
Purification:	Antigen affinity purification
Conjugation:	Unconjugated
Storage:	Store at -20°C.
Stability:	1 year
Gene Name:	HRAS like suppressor 2
Database Link:	<a href="#">Entrez Gene 54979 Human Q9NWW9</a>
Background:	The protein encoded by this gene has both phospholipase and acyltransferase activities and acts as a tumor suppressor. The encoded protein can hydrolyze dipalmitoylated phosphatidylcholine (PC) to palmitic acid and lyso-PC. In addition, this protein can catalyze the N-acylation of phosphatidylethanolamine and can catalyze the O-acylation of lyso-PC to form PC. [provided by RefSeq, Jul 2016]
Synonyms:	FLJ20556; PLA1/2-2



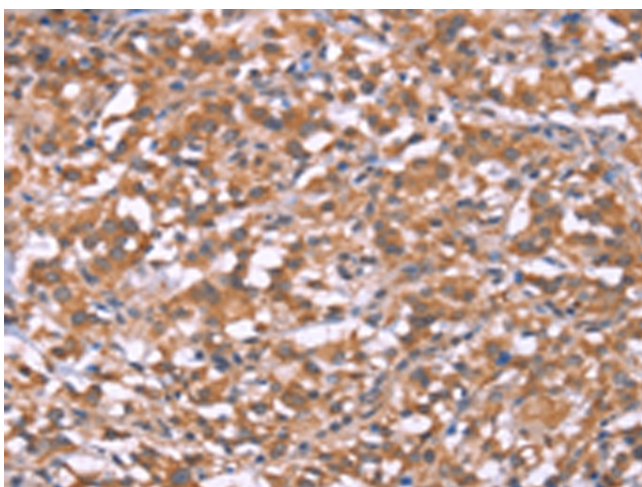
[View online »](#)

**Product images:**

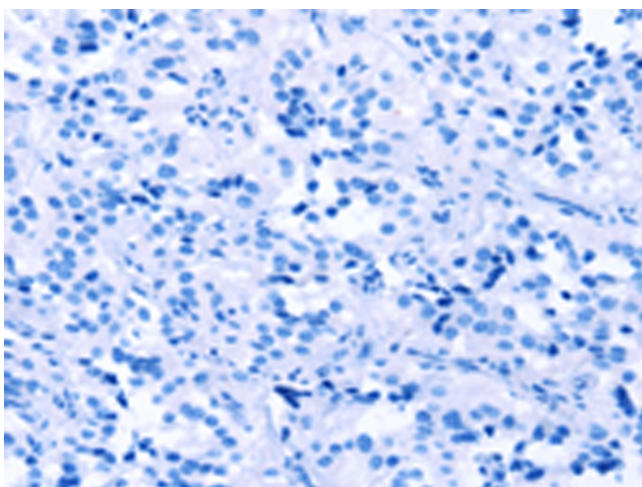
Immunohistochemistry of paraffin-embedded Human gastric cancer tissue using TA367084 (PLAAT2 Antibody) at dilution 1/20 (Original magnification:  $\times 200$ )



Immunohistochemistry of paraffin-embedded Human gastric cancer tissue using TA367084 (PLAAT2 Antibody) at dilution 1/20, treated with synthetic peptide. (Original magnification:  $\times 200$ )



Immunohistochemistry of paraffin-embedded Human thyroid cancer tissue using TA367084 (PLAAT2 Antibody) at dilution 1/20 (Original magnification: ×200)



Immunohistochemistry of paraffin-embedded Human thyroid cancer tissue using TA367084 (PLAAT2 Antibody) at dilution 1/20, treated with synthetic peptide. (Original magnification: ×200)