

Product datasheet for **TA367076S**

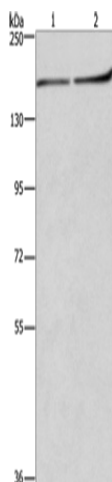
HDLBP Rabbit Polyclonal Antibody

Product data:

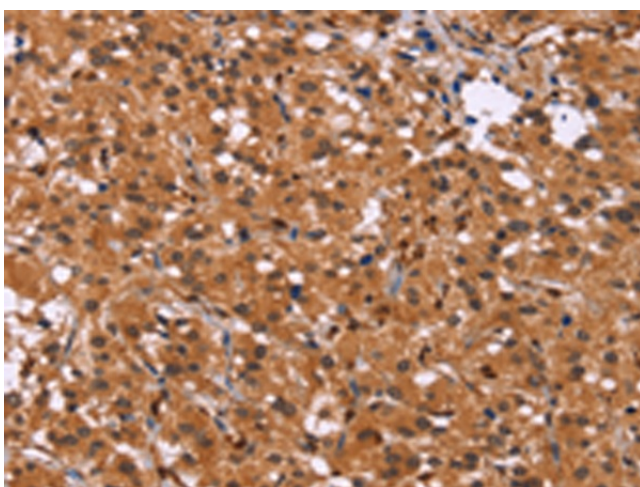
Product Type:	Primary Antibodies
Applications:	IHC, WB
Recommended Dilution:	WB: 200-1000 WB positive control: Raji and NIH/3T3 cells IHC: 50-200 Positive control: Human thyroid cancer Predicted cell location: Cytoplasm and Nucleus
Reactivity:	Human, Mouse, Rat
Host:	Rabbit
Isotype:	IgG
Clonality:	Polyclonal
Immunogen:	Synthetic peptide of human HDLBP
Formulation:	pH7.4 PBS, 0.05% NaN ₃ , 40% Glycerol
Purification:	Antigen affinity purification
Conjugation:	Unconjugated
Storage:	Store at -20°C.
Stability:	1 year
Predicted Protein Size:	141 kDa
Gene Name:	high density lipoprotein binding protein
Database Link:	Entrez Gene 3069 Human Q00341
Background:	The protein encoded by this gene binds high density lipoprotein (HDL) and may function to regulate excess cholesterol levels in cells. The encoded protein also binds RNA and can induce heterochromatin formation. Three transcript variants encoding two different isoforms have been found for this gene.
Synonyms:	FLJ16432; HBP; OTTHUMP00000200288; PRO2900; VGL; vigilin



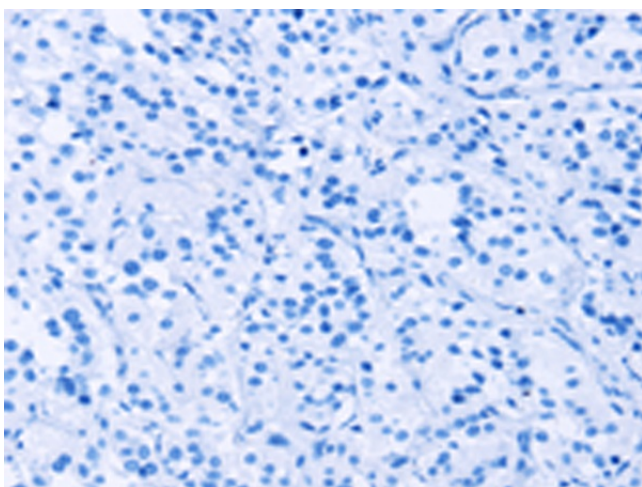
[View online »](#)

Product images:

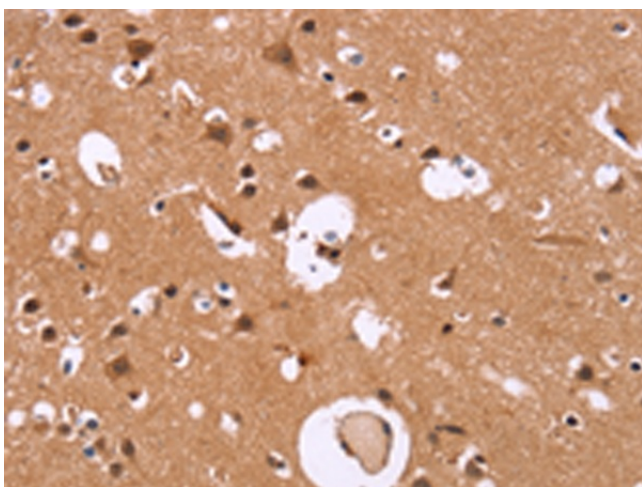
Gel: 6%SDS-PAGE
Lysate: 40 μ g
Lane 1-2: Raji cells
NIH/3T3 cells
Primary antibody: [TA367076] (HDLBP Antibody)
at dilution 1/250
Secondary antibody: Goat anti rabbit IgG at
1/8000 dilution
Exposure time: 2 minutes



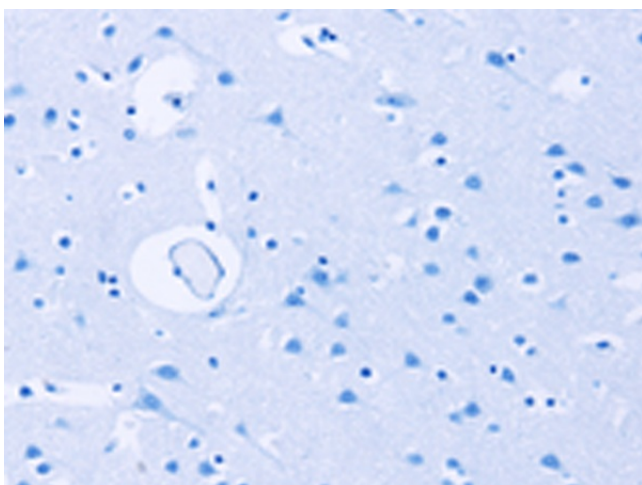
Immunohistochemistry of paraffin-embedded
Human thyroid cancer tissue using [TA367076]
(HDLBP Antibody) at dilution 1/30 (Original
magnification: \times 200)



Immunohistochemistry of paraffin-embedded Human thyroid cancer tissue using [TA367076] (HDLBP Antibody) at dilution 1/30, treated with synthetic peptide. (Original magnification: $\times 200$)



Immunohistochemistry of paraffin-embedded Human brain tissue using [TA367076] (HDLBP Antibody) at dilution 1/30 (Original magnification: $\times 200$)



Immunohistochemistry of paraffin-embedded Human brain tissue using [TA367076] (HDLBP Antibody) at dilution 1/30, treated with synthetic peptide. (Original magnification: $\times 200$)