

## Product datasheet for **TA367061**

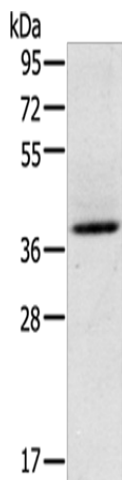
### **GAS1 Rabbit Polyclonal Antibody**

#### **Product data:**

Product Type:	Primary Antibodies
Applications:	WB
Recommended Dilution:	WB: 200-1000 WB positive control: Mouse brain tissue
Reactivity:	Human, Mouse
Host:	Rabbit
Isotype:	IgG
Clonality:	Polyclonal
Immunogen:	Synthetic peptide of human GAS1
Formulation:	pH7.4 PBS, 0.05% NaN <sub>3</sub> , 40% Glycerol
Concentration:	lot specific
Purification:	Antigen affinity purification
Conjugation:	Unconjugated
Storage:	Store at -20°C.
Stability:	1 year
Predicted Protein Size:	36 kDa
Gene Name:	growth arrest specific 1
Database Link:	<a href="#">Entrez Gene 2619 Human P54826</a>
Background:	Growth arrest-specific 1 plays a role in growth suppression. GAS1 blocks entry to S phase and prevents cycling of normal and transformed cells. Gas1 is a putative tumor suppressor gene.
Synonyms:	GAS-1



[View online »](#)

**Product images:**

Gel: 8%SDS-PAGE

Lysate: 40  $\mu$ g

Lane: Mouse brain tissue

Primary antibody: TA367061 (GAS1 Antibody) at dilution 1/200

Secondary antibody: Goat anti rabbit IgG at 1/8000 dilution

Exposure time: 40 seconds