

Product datasheet for **TA367060**

GABA A Receptor alpha 1 (GABRA1) Rabbit Polyclonal Antibody

Product data:

| | |
|--------------------------------|--|
| Product Type: | Primary Antibodies |
| Applications: | IHC, WB |
| Recommended Dilution: | WB: 200-1000 WB positive control: Human stomach cancer tissue and LoVo cells IHC: 25-100 Positive control: Human thyroid cancer Predicted cell location: Cytoplasm |
| Reactivity: | Human, Mouse, Rat |
| Host: | Rabbit |
| Isotype: | IgG |
| Clonality: | Polyclonal |
| Immunogen: | Synthetic peptide of human GABRA1 |
| Formulation: | pH7.4 PBS, 0.05% NaN ₃ , 40% Glycerol |
| Concentration: | lot specific |
| Purification: | Antigen affinity purification |
| Conjugation: | Unconjugated |
| Storage: | Store at -20°C. |
| Stability: | 1 year |
| Predicted Protein Size: | 52 kDa |
| Gene Name: | gamma-aminobutyric acid type A receptor alpha1 subunit |
| Database Link: | Entrez Gene 2554 Human P14867 |



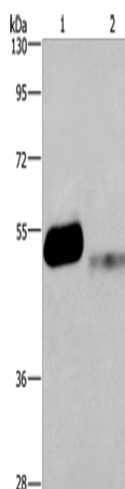
[View online »](#)

Background:

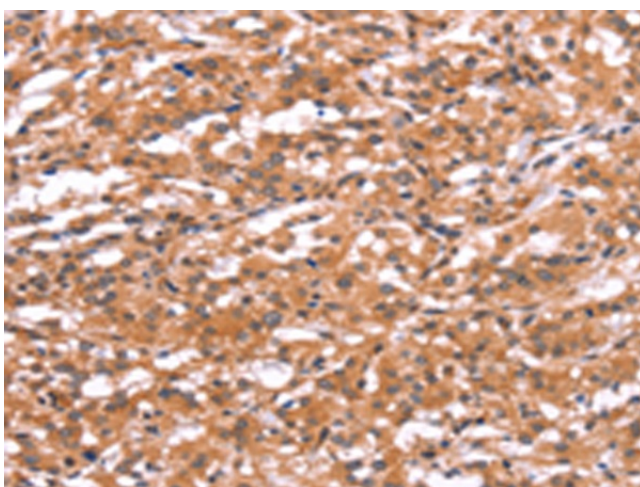
This gene encodes a gamma-aminobutyric acid (GABA) receptor. GABA is the major inhibitory neurotransmitter in the mammalian brain where it acts at GABA-A receptors, which are ligand-gated chloride channels. Chloride conductance of these channels can be modulated by agents such as benzodiazepines that bind to the GABA-A receptor. GABA-A receptors are pentameric, consisting of proteins from several subunit classes: alpha, beta, gamma, delta and rho. Mutations in this gene cause juvenile myoclonic epilepsy and childhood absence epilepsy type 4. Multiple transcript variants encoding the same protein have been identified for this gene

Synonyms:

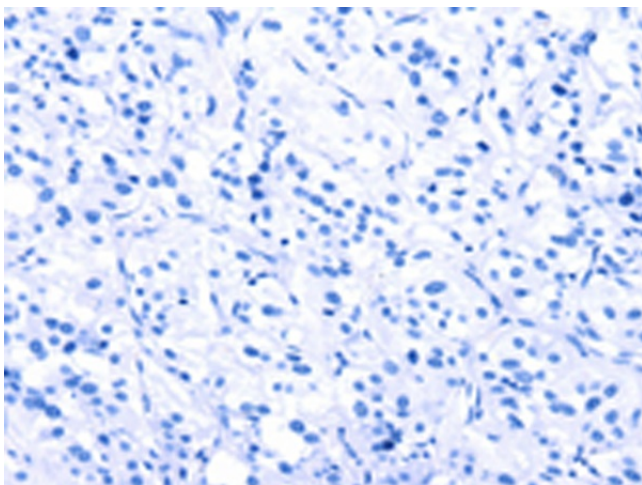
ECA4; EJM; EJM5

Product images:

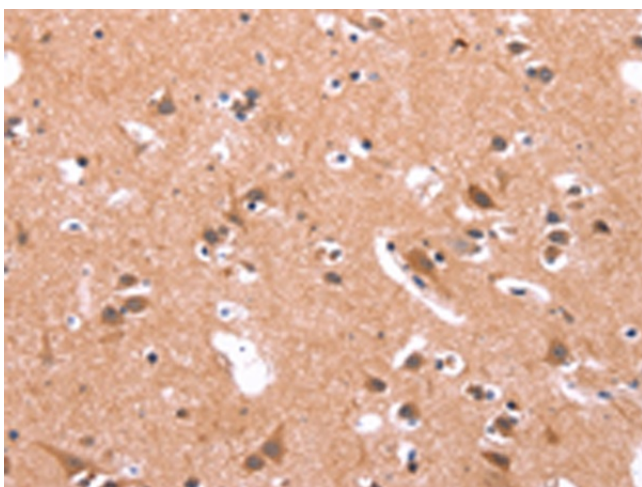
Gel: 8%SDS-PAGE
Lysate: 40 µg
Lane 1-2: Human stomach cancer tissue
LoVo cells
Primary antibody: TA367060 (GABRA1 Antibody)
at dilution 1/200
Secondary antibody: Goat anti rabbit IgG at
1/8000 dilution
Exposure time: 10 minutes



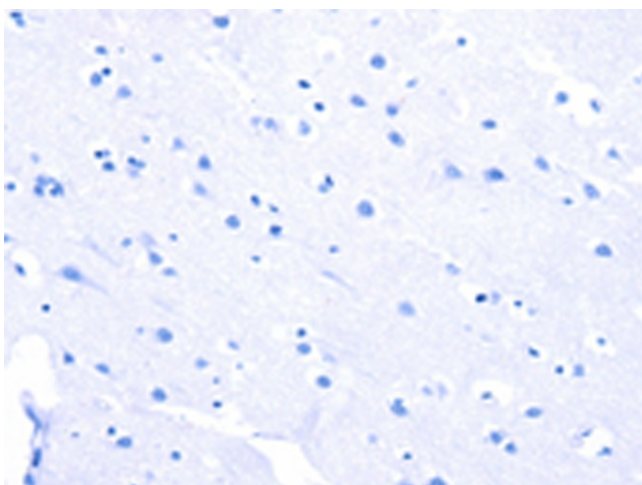
Immunohistochemistry of paraffin-embedded
Human thyroid cancer tissue using TA367060
(GABRA1 Antibody) at dilution 1/30 (Original
magnification: ×200)



Immunohistochemistry of paraffin-embedded Human thyroid cancer tissue using TA367060 (GABRA1 Antibody) at dilution 1/30, treated with synthetic peptide. (Original magnification: $\times 200$)



Immunohistochemistry of paraffin-embedded Human brain tissue using TA367060 (GABRA1 Antibody) at dilution 1/30 (Original magnification: $\times 200$)



Immunohistochemistry of paraffin-embedded Human brain tissue using TA367060 (GABRA1 Antibody) at dilution 1/30, treated with synthetic peptide. (Original magnification: $\times 200$)