

## Product datasheet for **TA367057S**

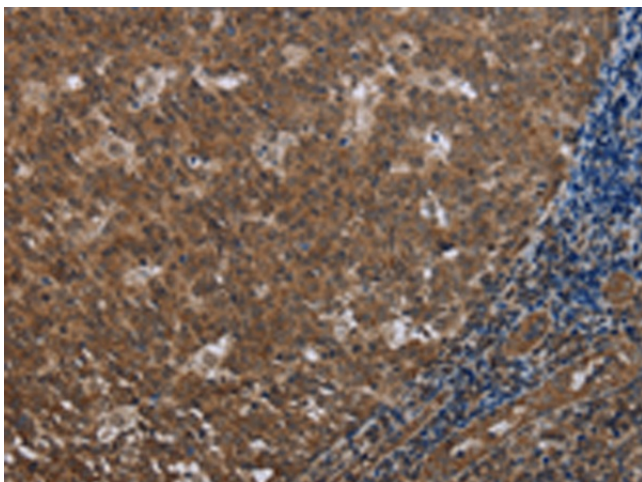
### **FOLH1B Rabbit Polyclonal Antibody**

#### **Product data:**

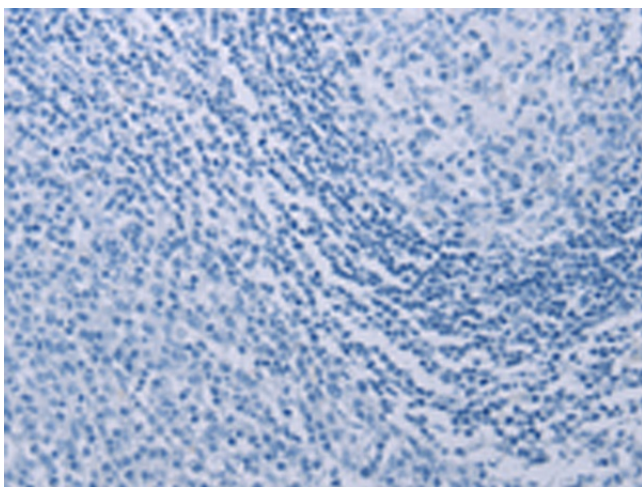
Product Type:	Primary Antibodies
Applications:	IHC
Recommended Dilution:	IHC: 25-100 Positive control: Human tonsil Predicted cell location: Cytoplasm
Reactivity:	Human
Host:	Rabbit
Isotype:	IgG
Clonality:	Polyclonal
Immunogen:	Synthetic peptide of human FOLH1B
Formulation:	pH7.4 PBS, 0.05% NaN <sub>3</sub> , 40% Glycerol
Purification:	Antigen affinity purification
Conjugation:	Unconjugated
Storage:	Store at -20°C.
Stability:	1 year
Gene Name:	folate hydrolase 1B
Database Link:	<a href="#">Entrez Gene 219595 Human Q9HBA9</a>
Background:	PSM is an integral membrane protein, and PCTA-1 is related to the galectin gene family, which mediate both cell-cell and cell-matrix interactions in a manner similar to the selectin subgroup of C-type lectins. STEAP is a serpentine transmembrane cell-surface tumor-antigen that is predicted to functions as a channel or transporter protein. In addition to prostate cancers, STEAP is also upregulated in bladder, colon and ovarian cancers.
Synonyms:	FOLH2; FOLHP; GCP3; GCPIII; NAALADase; PSM; PSMA-LIKE; PSMAL



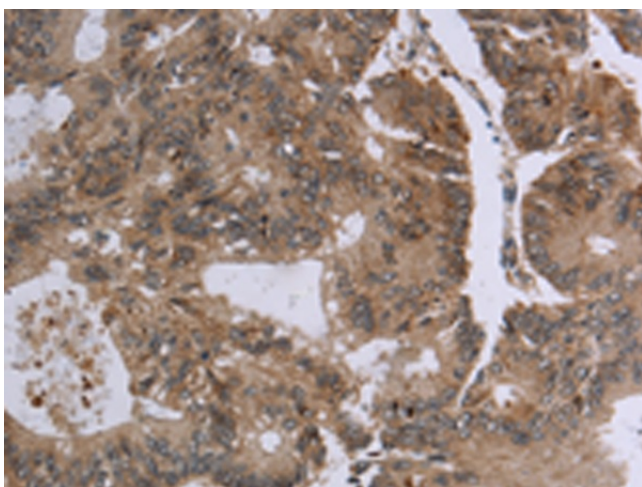
[View online »](#)

**Product images:**


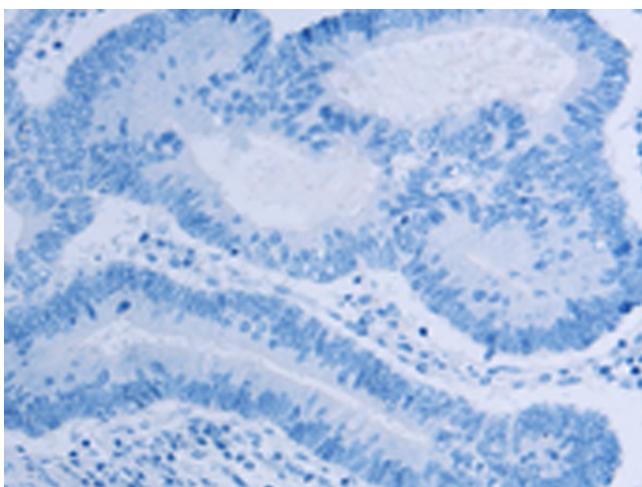
Immunohistochemistry of paraffin-embedded Human tonsil tissue using [TA367057] (FOLH1B Antibody) at dilution 1/20 (Original magnification: ×200)



Immunohistochemistry of paraffin-embedded Human tonsil tissue using [TA367057] (FOLH1B Antibody) at dilution 1/20, treated with synthetic peptide. (Original magnification: ×200)



Immunohistochemistry of paraffin-embedded Human colon cancer tissue using [TA367057] (FOLH1B Antibody) at dilution 1/20 (Original magnification: ×200)



Immunohistochemistry of paraffin-embedded Human colon cancer tissue using [TA367057] (FOLH1B Antibody) at dilution 1/20, treated with synthetic peptide. (Original magnification: ×200)