

## Product datasheet for **TA367055**

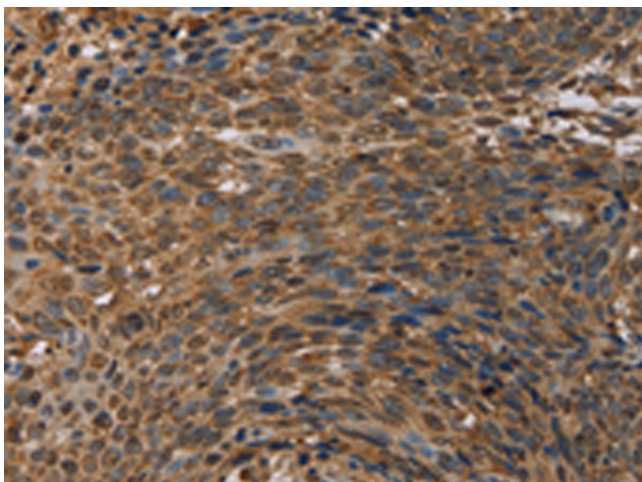
### HIF1AN Rabbit Polyclonal Antibody

#### Product data:

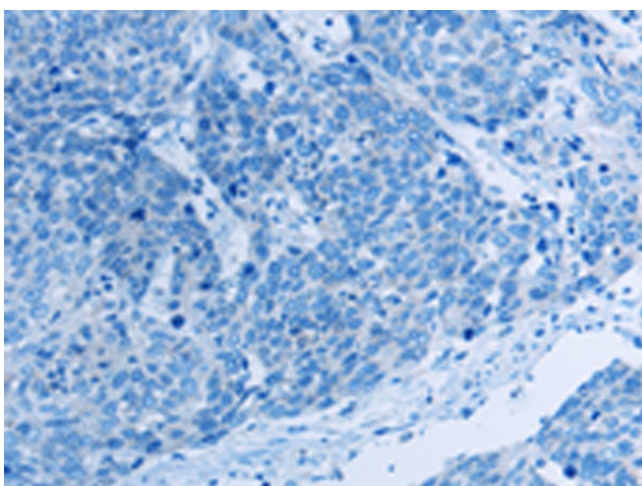
|                       |   |
|-----------------------|---|
| Product Type:         | Primary Antibodies  |
| Applications:         | IHC   |
| Recommended Dilution: | IHC: 25-100<br>Positive control: Human cervical cancer<br>Predicted cell location: Nucleus and Cytoplasm  |
| Reactivity:           | Human, Mouse  |
| Host:                 | Rabbit  |
| Isotype:              | IgG   |
| Clonality:            | Polyclonal  |
| Immunogen:            | Synthetic peptide of human HIF1AN   |
| Formulation:          | pH7.4 PBS, 0.05% NaN <sub>3</sub> , 40% Glycerol  |
| Concentration:        | lot specific  |
| Purification:         | Antigen affinity purification   |
| Conjugation:          | Unconjugated  |
| Storage:              | Store at -20°C.   |
| Stability:            | 1 year  |
| Gene Name:            | hypoxia inducible factor 1 alpha subunit inhibitor  |
| Database Link:        | <a href="#">Entrez Gene 55662 Human Q9NWT6</a>  |
| Background:           | Hypoxia-inducible factor 1-alpha inhibitor is a protein that in humans is encoded by the HIF1AN gene. Hydroxylates HIF-1 alpha at 'Asp-803' in the C-terminal transactivation domain (CAD). Functions as an oxygen sensor and, under normoxic conditions, the hydroxylation prevents interaction of HIF-1 with transcriptional coactivators including Cbp/p300-interacting transactivator. Involved in transcriptional repression through interaction with HIF1A, VHL and histone deacetylases. Hydroxylates specific Asn residues within ankyrin repeat domains (ARD) of NFKB1, NFKBIA, NOTCH1, ASB4, PPP1R12A and several other ARD-containing proteins |
| Synonyms:             | DKFZp762F1811; FIH-1; FIH1; FLJ20615; FLJ22027  |



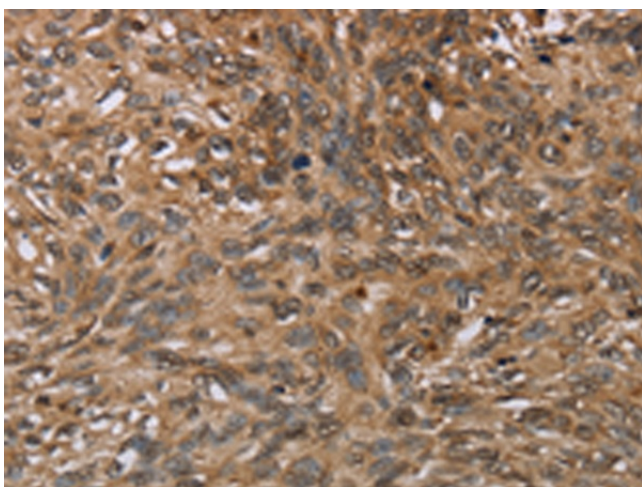
[View online »](#)

**Product images:**

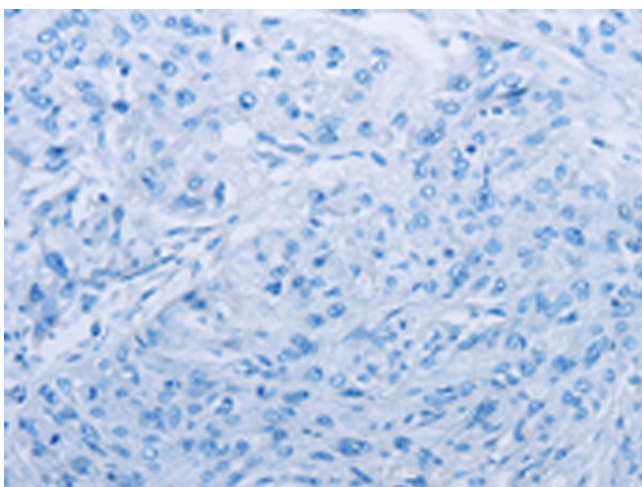
Immunohistochemistry of paraffin-embedded Human cervical cancer tissue using TA367055 (HIF1AN Antibody) at dilution 1/20 (Original magnification: ×200)



Immunohistochemistry of paraffin-embedded Human cervical cancer tissue using TA367055 (HIF1AN Antibody) at dilution 1/20, treated with synthetic peptide. (Original magnification: ×200)



Immunohistochemistry of paraffin-embedded Human esophagus cancer tissue using TA367055 (HIF1AN Antibody) at dilution 1/20 (Original magnification:  $\times 200$ )



Immunohistochemistry of paraffin-embedded Human esophagus cancer tissue using TA367055 (HIF1AN Antibody) at dilution 1/20, treated with synthetic peptide. (Original magnification:  $\times 200$ )