

## Product datasheet for **TA367052S**

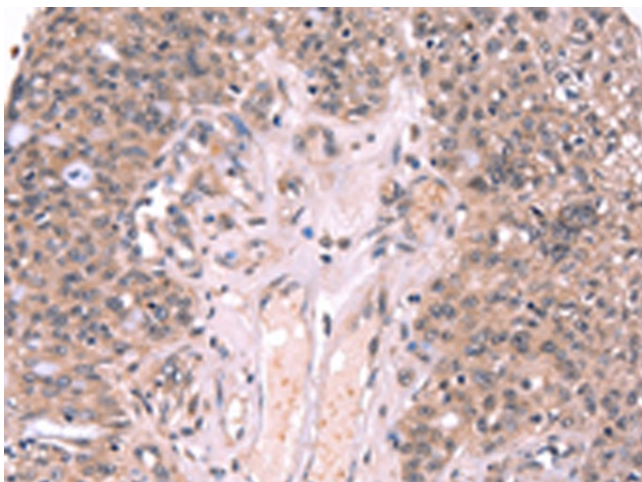
### EXTL1 Rabbit Polyclonal Antibody

#### Product data:

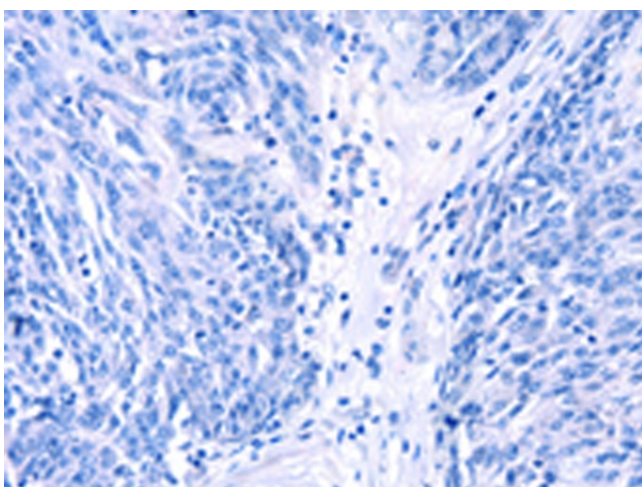
Product Type:	Primary Antibodies
Applications:	IHC
Recommended Dilution:	IHC: 25-100 Positive control: Human ovarian cancer Predicted cell location: Cytoplasm
Reactivity:	Human, Mouse
Host:	Rabbit
Isotype:	IgG
Clonality:	Polyclonal
Immunogen:	Synthetic peptide of human EXTL1
Formulation:	pH7.4 PBS, 0.05% NaN <sub>3</sub> , 40% Glycerol
Purification:	Antigen affinity purification
Conjugation:	Unconjugated
Storage:	Store at -20°C.
Stability:	1 year
Gene Name:	exostosin-like glycosyltransferase 1
Database Link:	<a href="#">Entrez Gene 2134 Human Q92935</a>
Background:	This gene is a member of the multiple exostoses (EXT) family of glycosyltransferases, which function in the chain polymerization of heparan sulfate and heparin. The encoded protein harbors alpha 1,4- N-acetylglucosaminyltransferase activity, and is involved in chain elongation of heparan sulfate and possibly heparin.
Synonyms:	Exostosin-L; EXTL; MGC70794



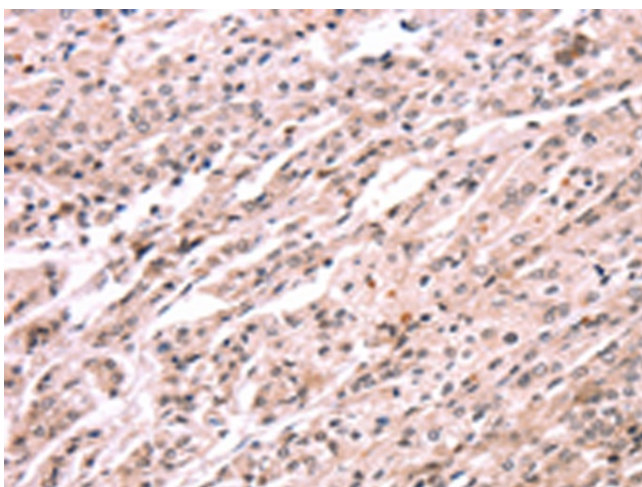
[View online »](#)

**Product images:**

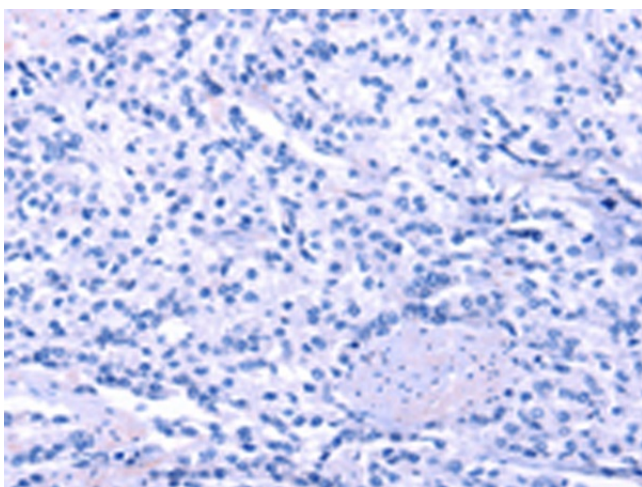
Immunohistochemistry of paraffin-embedded Human ovarian cancer tissue using [TA367052] (EXTL1 Antibody) at dilution 1/20 (Original magnification:  $\times 200$ )



Immunohistochemistry of paraffin-embedded Human ovarian cancer tissue using [TA367052] (EXTL1 Antibody) at dilution 1/20, treated with synthetic peptide. (Original magnification:  $\times 200$ )



Immunohistochemistry of paraffin-embedded Human prostate cancer tissue using [TA367052] (EXTL1 Antibody) at dilution 1/20 (Original magnification:  $\times 200$ )



Immunohistochemistry of paraffin-embedded Human prostate cancer tissue using [TA367052] (EXTL1 Antibody) at dilution 1/20, treated with synthetic peptide. (Original magnification:  $\times 200$ )