

Product datasheet for **TA367039**

Kv2.1 (KCNB1) Rabbit Polyclonal Antibody

Product data:

| | |
|-------------------------|---|
| Product Type: | Primary Antibodies |
| Applications: | IHC, WB |
| Recommended Dilution: | WB: 200-1000 WB positive control: K562 cell and Human cerebrum tissue lysates IHC: 25-100 Positive control: Human liver cancer Predicted cell location: Cell membrane |
| Reactivity: | Human, Mouse, Rat |
| Host: | Rabbit |
| Isotype: | IgG |
| Clonality: | Polyclonal |
| Immunogen: | Synthetic peptide of human KCNB1 |
| Formulation: | pH7.4 PBS, 0.05% NaN ₃ , 40% Glycerol |
| Concentration: | lot specific |
| Purification: | Antigen affinity purification |
| Conjugation: | Unconjugated |
| Storage: | Store at -20°C. |
| Stability: | 1 year |
| Predicted Protein Size: | 96 kDa |
| Gene Name: | potassium voltage-gated channel subfamily B member 1 |
| Database Link: | Entrez Gene 3745 Human Q14721 |



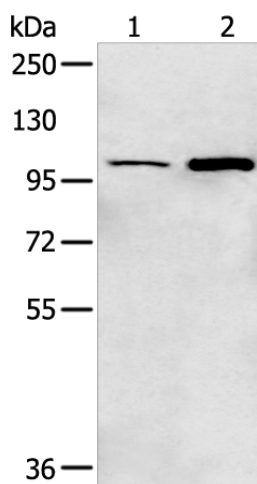
[View online »](#)

Background:

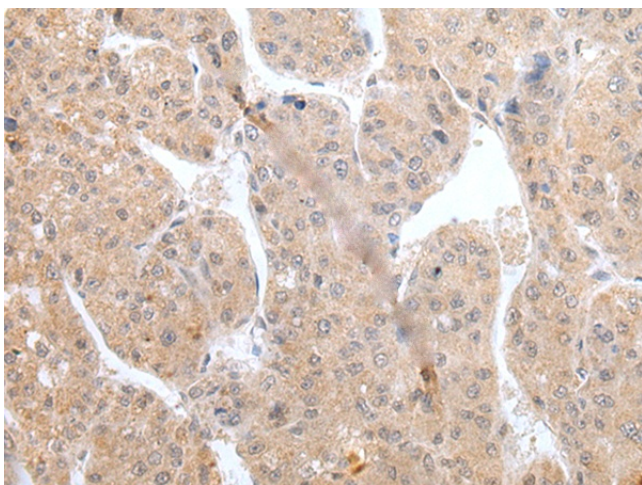
Voltage-gated potassium (Kv) channels represent the most complex class of voltage-gated ion channels from both functional and structural standpoints. Their diverse functions include regulating neurotransmitter release, heart rate, insulin secretion, neuronal excitability, epithelial electrolyte transport, smooth muscle contraction, and cell volume. Four sequence-related potassium channel genes - shaker, shaw, shab, and shal - have been identified in *Drosophila*, and each has been shown to have human homolog(s). This gene encodes a member of the potassium channel, voltage-gated, shab-related subfamily. This member is a delayed rectifier potassium channel and its activity is modulated by some other family members.

Synonyms:

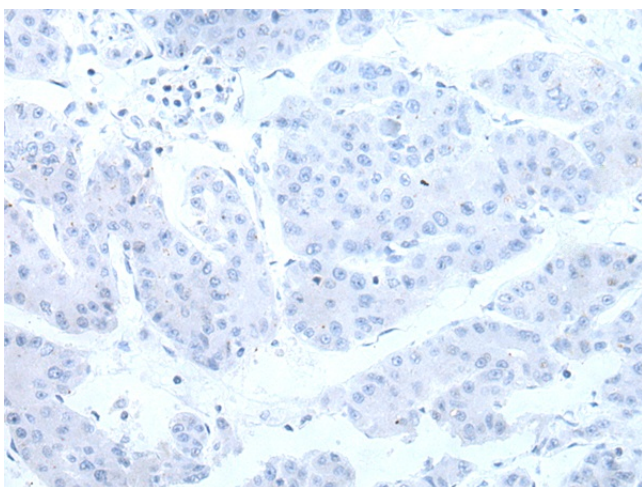
DRK1; h-DRK1; Kv2.1

Product images:

Gel: 6%SDS-PAGE
Lysate: 40 μ g
Lane 1-2: K562 cell and Human cerebrium tissue lysates
Primary antibody: TA367039 (KCNB1 Antibody) at dilution 1/200 dilution
Secondary antibody: Goat anti rabbit IgG at 1/8000 dilution
Exposure time: 3 minutes



Immunohistochemistry of paraffin-embedded Human liver cancer tissue using TA367039 (KCNB1 Antibody) at dilution 1/20 (Original magnification: \times 200)



Immunohistochemistry of paraffin-embedded Human liver cancer tissue using TA367039 (KCNB1 Antibody) at dilution 1/20, treated with synthetic peptide. (Original magnification: ×200)