

## Product datasheet for **TA367038**

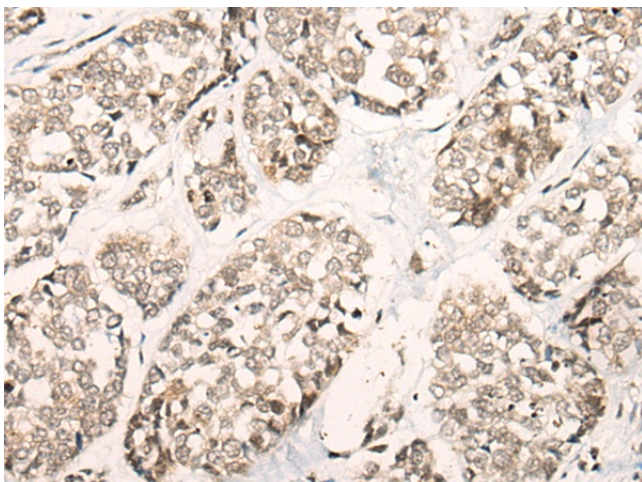
### DNA polymerase alpha (POLA1) Rabbit Polyclonal Antibody

#### Product data:

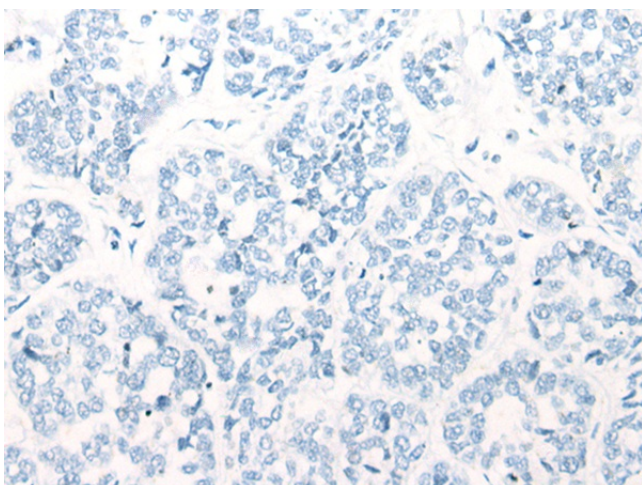
Product Type:	Primary Antibodies
Applications:	IHC
Recommended Dilution:	IHC: 20-100 Positive control: Human esophagus cancer Predicted cell location: Nucleus
Reactivity:	Human, Mouse, Rat
Host:	Rabbit
Isotype:	IgG
Clonality:	Polyclonal
Immunogen:	Synthetic peptide of human POLA1
Formulation:	pH7.4 PBS, 0.05% NaN <sub>3</sub> , 40% Glycerol
Concentration:	lot specific
Purification:	Antigen affinity purification
Conjugation:	Unconjugated
Storage:	Store at -20°C.
Stability:	1 year
Gene Name:	polymerase (DNA) alpha 1, catalytic subunit
Database Link:	<a href="#">Entrez Gene 5422 Human P09884</a>
Background:	This gene encodes the catalytic subunit of DNA polymerase, which together with a regulatory and two primase subunits, forms the DNA polymerase alpha complex. The catalytic subunit plays an essential role in the initiation of DNA replication.
Synonyms:	DKFZp686K1672; p180; POLA



[View online »](#)

**Product images:**

Immunohistochemistry of paraffin-embedded Human esophagus cancer tissue using TA367038 (POLA1 Antibody) at dilution 1/30 (Original magnification:  $\times 200$ )



Immunohistochemistry of paraffin-embedded Human esophagus cancer tissue using TA367038 (POLA1 Antibody) at dilution 1/30, treated with synthetic peptide. (Original magnification:  $\times 200$ )