

Product datasheet for **TA367033**

Deformed Epidermal Autoregulatory Factor 1 (DEAF1) Rabbit Polyclonal Antibody

Product data:

Product Type:	Primary Antibodies
Applications:	IHC
Recommended Dilution:	IHC: 25-100 Positive control: Human gastric cancer Predicted cell location: Cytoplasm
Reactivity:	Human
Host:	Rabbit
Isotype:	IgG
Clonality:	Polyclonal
Immunogen:	Synthetic peptide of human DEAF1
Formulation:	pH7.4 PBS, 0.05% NaN ₃ , 40% Glycerol
Concentration:	lot specific
Purification:	Antigen affinity purification
Conjugation:	Unconjugated
Storage:	Store at -20°C.
Stability:	1 year
Gene Name:	DEAF1, transcription factor
Database Link:	Entrez Gene 10522 Human O75398



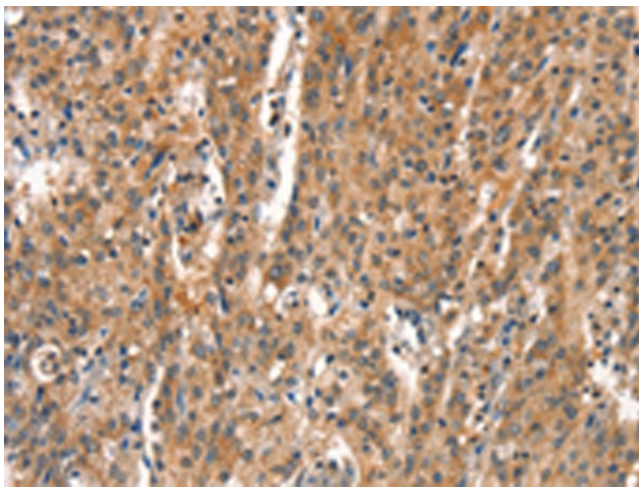
[View online »](#)

Background:

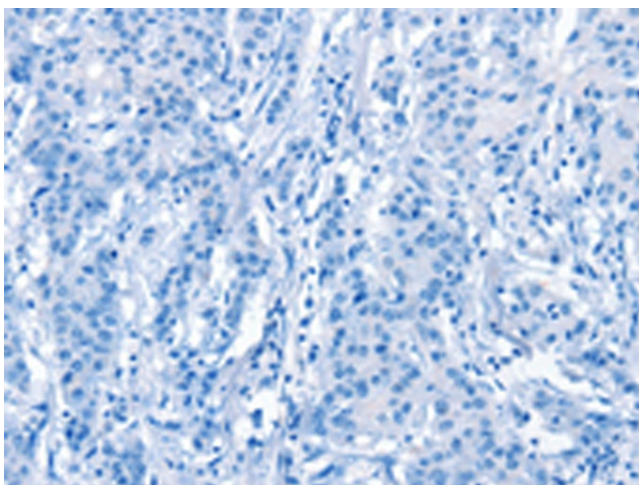
Suppressin, also known as DEAF1 (deformed epidermal autoregulatory factor 1), SPN, NUDR (nuclear DEAF-1-related transcriptional regulator), or ZMYND5 (zinc finger MYND domain-containing protein 5), is a transcription factor required for embryonic development. Suppressin contains one SAND domain and one C-terminal MYND-type zinc finger. It interacts with LMO4 and CLIM-2, suggesting that it plays a role mediating cell fate and embryonic pattern formation. Suppressin is expressed in a variety of tissues and localizes to the nucleus. Several isoforms exist due to alternative splicing and, depending on the isoform, Suppressin is secreted in some cell types. Secreted Suppressin can function to inhibit cell proliferation, arresting cells in the G0 or G1 phase. Mutations in the gene encoding Suppressin may result in a growth advantage leading to the development and progression of neoplasia. This suggest that Supressin is a potential target for cancer therapy.

Synonyms:

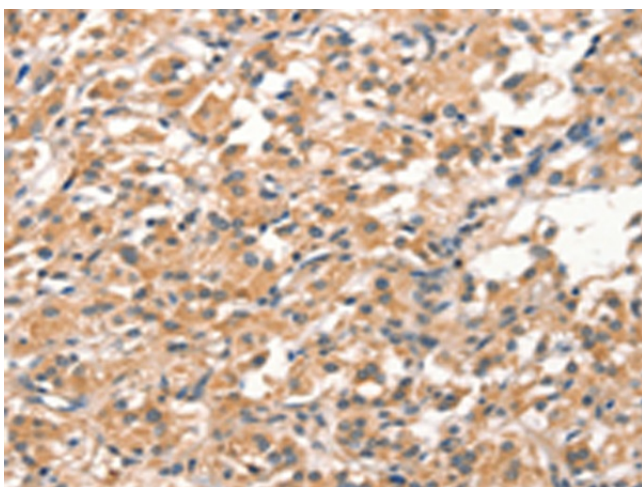
NUDR; SPN; Suppressin; ZMYND5

Product images:

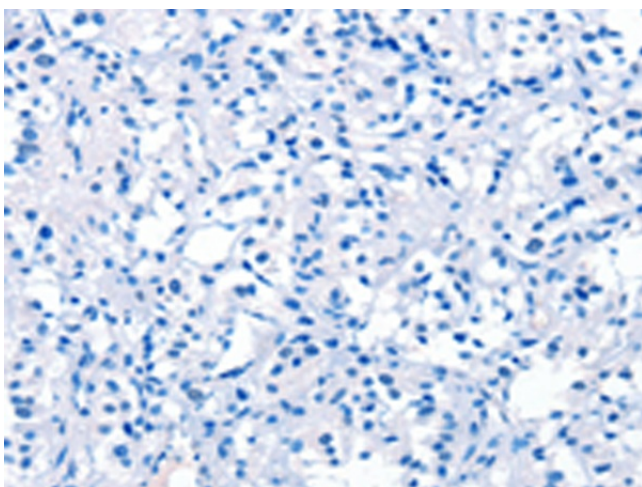
Immunohistochemistry of paraffin-embedded Human gastric cancer tissue using TA367033 (DEAF1 Antibody) at dilution 1/15 (Original magnification: $\times 200$)



Immunohistochemistry of paraffin-embedded Human gastric cancer tissue using TA367033 (DEAF1 Antibody) at dilution 1/15, treated with synthetic peptide. (Original magnification: $\times 200$)



Immunohistochemistry of paraffin-embedded Human thyroid cancer tissue using TA367033 (DEAF1 Antibody) at dilution 1/15 (Original magnification: ×200)



Immunohistochemistry of paraffin-embedded Human thyroid cancer tissue using TA367033 (DEAF1 Antibody) at dilution 1/15, treated with synthetic peptide. (Original magnification: ×200)