

Product datasheet for **TA367027**

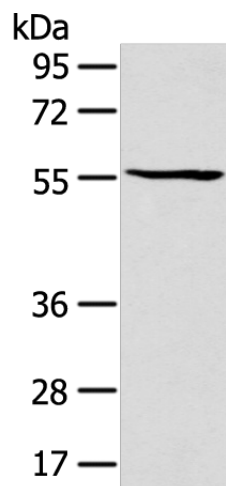
PTGIS Rabbit Polyclonal Antibody

Product data:

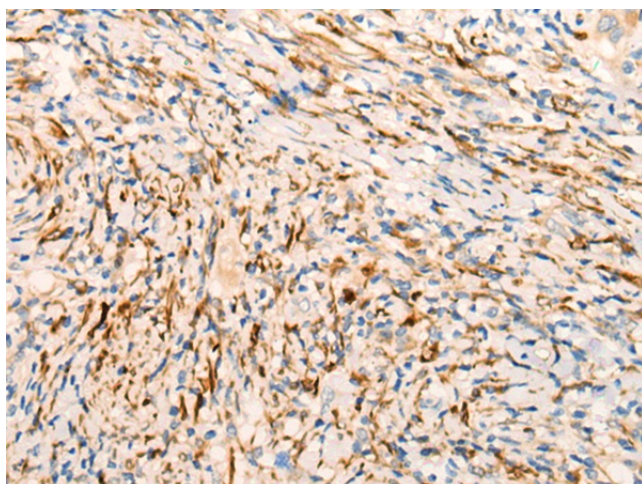
Product Type:	Primary Antibodies
Applications:	IHC, WB
Recommended Dilution:	WB: 200-1000 WB positive control: Mouse lung tissue IHC: 20-100 Positive control: Human cervical cancer Predicted cell location: Cell membrane
Reactivity:	Human, Mouse
Host:	Rabbit
Isotype:	IgG
Clonality:	Polyclonal
Immunogen:	Synthetic peptide of human PTGIS
Formulation:	pH7.4 PBS, 0.05% NaN ₃ , 40% Glycerol
Concentration:	lot specific
Purification:	Antigen affinity purification
Conjugation:	Unconjugated
Storage:	Store at -20°C.
Stability:	1 year
Predicted Protein Size:	57 kDa
Gene Name:	prostaglandin I ₂ (prostacyclin) synthase
Database Link:	Entrez Gene 5740 Human Q16647
Background:	This gene encodes a member of the cytochrome P450 superfamily of enzymes. The cytochrome P450 proteins are monooxygenases which catalyze many reactions involved in drug metabolism and synthesis of cholesterol, steroids and other lipids. However, this protein is considered a member of the cytochrome P450 superfamily on the basis of sequence similarity rather than functional similarity.
Synonyms:	CYP8; CYP8A1; MGC126858; MGC126860; PGIS; PTGI



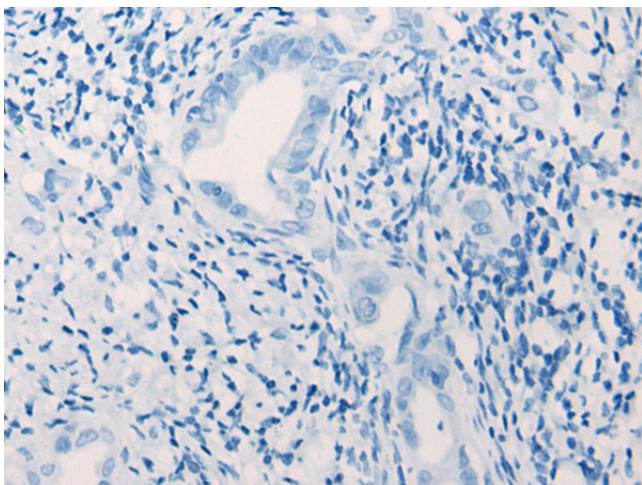
[View online »](#)

Product images:

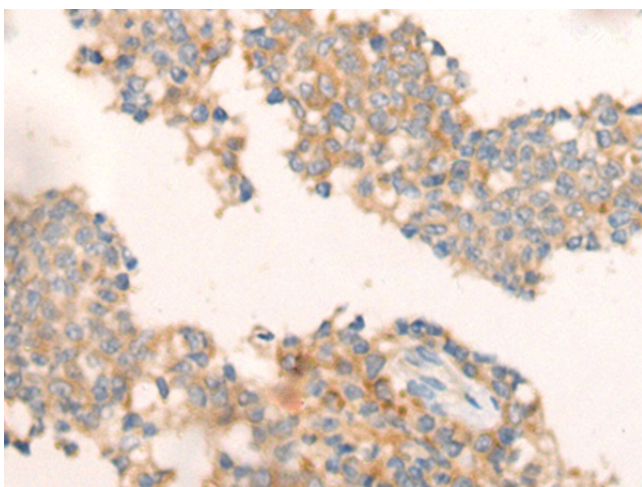
Gel: 8%SDS-PAGE
Lysate: 40 µg
Lane: Mouse lung tissue
Primary antibody: TA367027 (PTGIS Antibody) at dilution 1/200
Secondary antibody: Goat anti rabbit IgG at 1/8000 dilution
Exposure time: 30 seconds



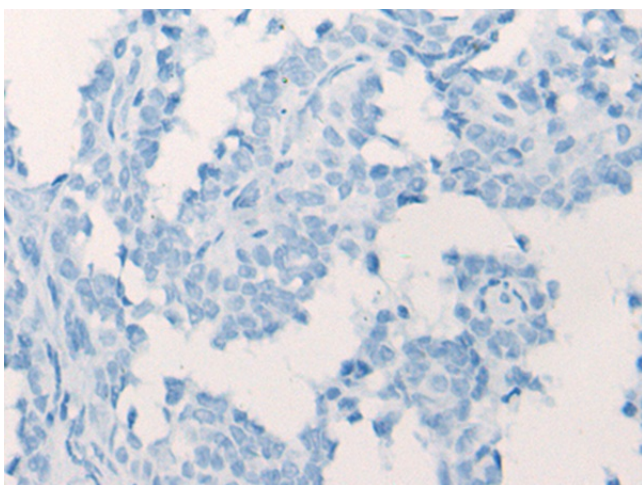
Immunohistochemistry of paraffin-embedded Human cervical cancer tissue using TA367027 (PTGIS Antibody) at dilution 1/25 (Original magnification: ×200)



Immunohistochemistry of paraffin-embedded Human cervical cancer tissue using TA367027 (PTGIS Antibody) at dilution 1/25, treated with synthetic peptide. (Original magnification: ×200)



Immunohistochemistry of paraffin-embedded Human ovarian cancer tissue using TA367027 (PTGIS Antibody) at dilution 1/25 (Original magnification: ×200)



Immunohistochemistry of paraffin-embedded Human ovarian cancer tissue using TA367027 (PTGIS Antibody) at dilution 1/25, treated with synthetic peptide. (Original magnification: ×200)