

Product datasheet for **TA367024**

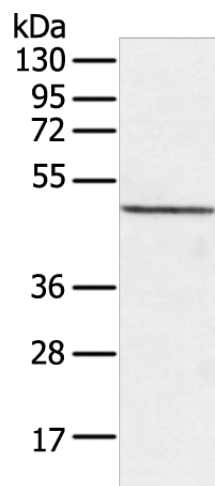
DIPK2B Rabbit Polyclonal Antibody

Product data:

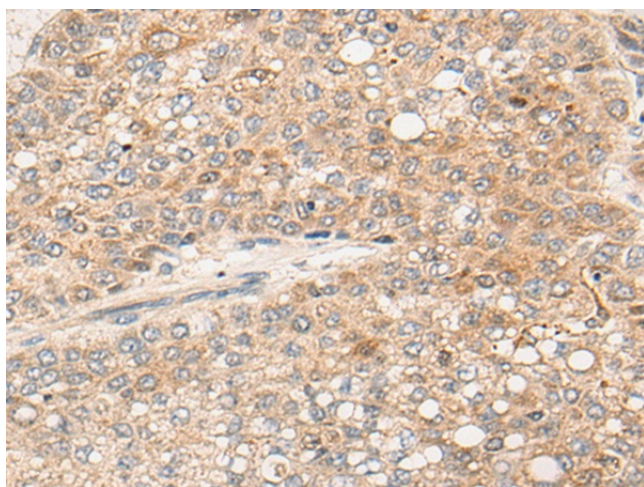
Product Type:	Primary Antibodies
Applications:	IHC, WB
Recommended Dilution:	WB: 200-1000 WB positive control: Hela cell IHC: 25-100 Positive control: Human liver cancer Predicted cell location: Cytoplasm
Reactivity:	Human, Mouse
Host:	Rabbit
Isotype:	IgG
Clonality:	Polyclonal
Immunogen:	Synthetic peptide of human DIPK2B
Formulation:	pH7.4 PBS, 0.05% NaN ₃ , 40% Glycerol
Concentration:	lot specific
Purification:	Antigen affinity purification
Conjugation:	Unconjugated
Storage:	Store at -20°C.
Stability:	1 year
Predicted Protein Size:	49 kDa
Gene Name:	chromosome X open reading frame 36
Database Link:	Entrez Gene 79742 Human Q9H7Y0
Background:	The function of this protein remains unknown.
Synonyms:	4930578C19Rik; bA435K1.1; DKFZp313K0825; EPQL1862; FLJ14103; FLJ55198; FLJ55198;; hCG1981635; PRO3743



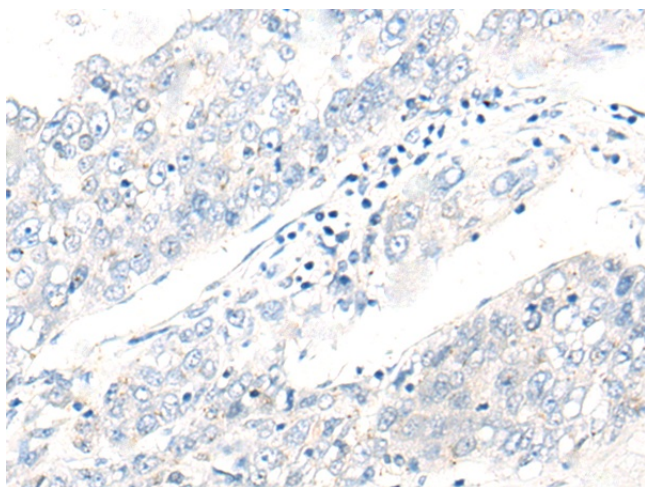
[View online »](#)

Product images:

Gel: 8%SDS-PAGE
Lysate: 40 μ g
Lane: HeLa cell
Primary antibody: TA367024 (DIPK2B Antibody) at dilution 1/200
Secondary antibody: Goat anti rabbit IgG at 1/8000 dilution
Exposure time: 40 seconds



Immunohistochemistry of paraffin-embedded Human liver cancer tissue using TA367024 (DIPK2B Antibody) at dilution 1/30 (Original magnification: \times 200)



Immunohistochemistry of paraffin-embedded Human liver cancer tissue using TA367024 (DIPK2B Antibody) at dilution 1/30, treated with synthetic peptide. (Original magnification: ×200)