

## Product datasheet for **TA367023S**

### CTR9 Rabbit Polyclonal Antibody

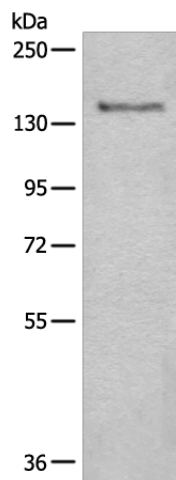
#### Product data:

Product Type:	Primary Antibodies
Applications:	WB
Recommended Dilution:	WB: 200-1000 WB positive control: K562 cell lysate
Reactivity:	Human, Mouse
Host:	Rabbit
Isotype:	IgG
Clonality:	Polyclonal
Immunogen:	Synthetic peptide of human CTR9
Formulation:	pH7.4 PBS, 0.05% NaN <sub>3</sub> , 40% Glycerol
Purification:	Antigen affinity purification
Conjugation:	Unconjugated
Storage:	Store at -20°C.
Stability:	1 year
Predicted Protein Size:	134 kDa
Gene Name:	CTR9 homolog, Paf1/RNA polymerase II complex component
Database Link:	<a href="#">Entrez Gene 9646 Human Q6PD62</a>
Background:	The protein encoded by this gene is a component of the PAF1 complex, which associates with RNA polymerase II and functions in transcriptional regulation and elongation. This complex also plays a role in the modification of histones.
Synonyms:	KIAA0155; p150; p150TSP; SH2BP1; TSBP



[View online »](#)

## Product images:



Gel: 6%SDS-PAGE  
Lysate: 40  $\mu$ g  
Lane: K562 cell lysate  
Primary antibody: [TA367023] (CTR9 Antibody) at dilution 1/200  
Secondary antibody: Goat anti rabbit IgG at 1/8000 dilution  
Exposure time: 10MIN