

Product datasheet for **TA367021**

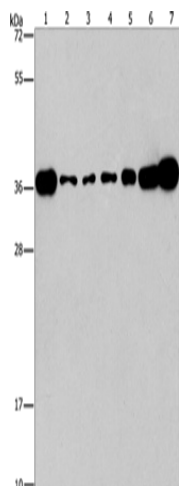
CRKL Rabbit Polyclonal Antibody

Product data:

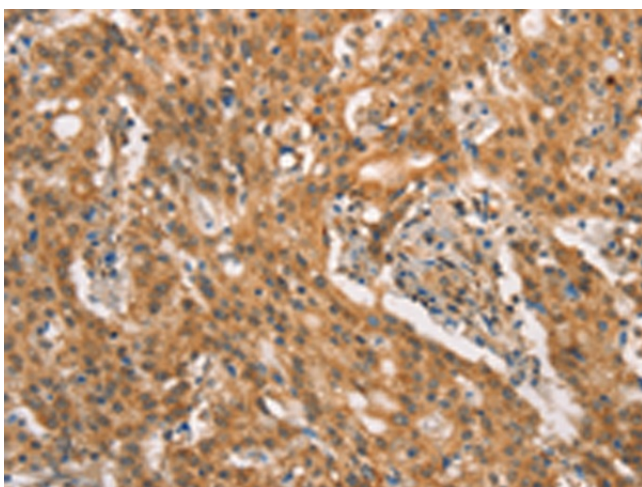
Product Type:	Primary Antibodies
Applications:	IHC, WB
Recommended Dilution:	WB: 500-2000 WB positive control: Lovo, A431, A549, hela, hepG2 and Raji cells, mouse brain tissue IHC: 25-100 Positive control: Human gastric cancer Predicted cell location: Cytoplasm
Reactivity:	Human, Mouse, Rat
Host:	Rabbit
Isotype:	IgG
Clonality:	Polyclonal
Immunogen:	Synthetic peptide of human CRKL
Formulation:	pH7.4 PBS, 0.05% NaN ₃ , 40% Glycerol
Concentration:	lot specific
Purification:	Antigen affinity purification
Conjugation:	Unconjugated
Storage:	Store at -20°C.
Stability:	1 year
Predicted Protein Size:	34 kDa
Gene Name:	v-crk avian sarcoma virus CT10 oncogene homolog-like
Database Link:	Entrez Gene 1399 Human P46109
Background:	This gene encodes a protein kinase containing SH2 and SH3 (src homology) domains which has been shown to activate the RAS and JUN kinase signaling pathways and transform fibroblasts in a RAS-dependent fashion. It is a substrate of the BCR-ABL tyrosine kinase, plays a role in fibroblast transformation by BCR-ABL, and may be oncogenic.
Synonyms:	OTTHUMP00000198539



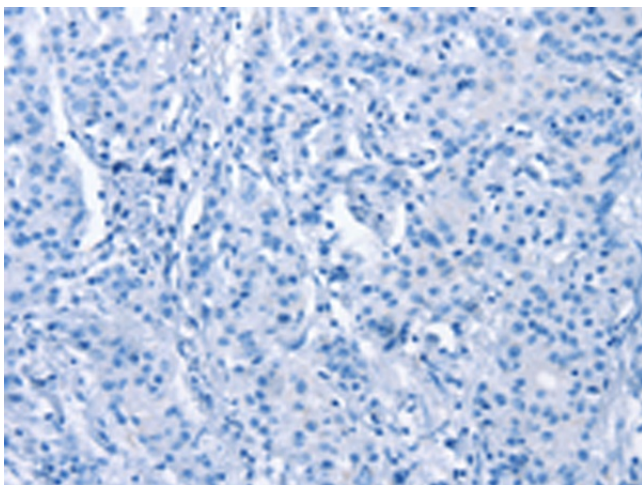
[View online »](#)

Product images:

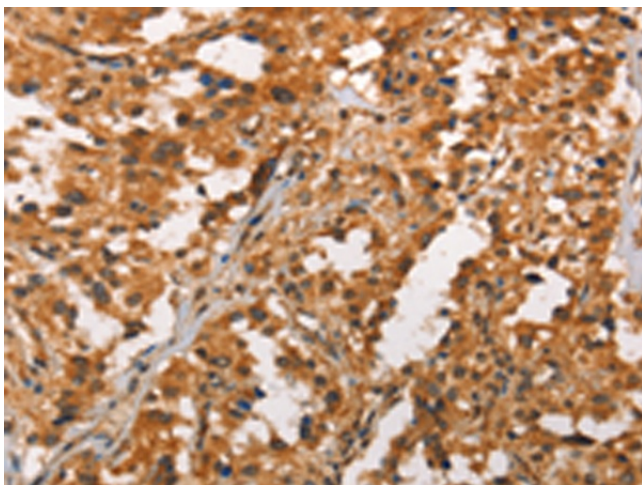
Gel: 15%SDS-PAGE
Lysate: 40 μ g
Lane 1-7: Lovo cells
A431 cells
A549 cells
hela cells
hepG2 cells
Raji cells
mouse brain tissue
Primary antibody: TA367021 (CRKL Antibody) at dilution 1/550
Secondary antibody: Goat anti rabbit IgG at 1/8000 dilution
Exposure time: 1 minute



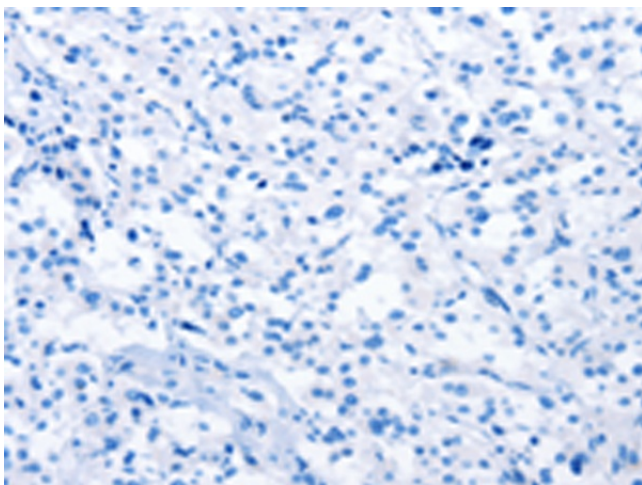
Immunohistochemistry of paraffin-embedded Human gastric cancer tissue using TA367021 (CRKL Antibody) at dilution 1/25 (Original magnification: \times 200)



Immunohistochemistry of paraffin-embedded Human gastric cancer tissue using TA367021 (CRKL Antibody) at dilution 1/25, treated with synthetic peptide. (Original magnification: ×200)



Immunohistochemistry of paraffin-embedded Human thyroid cancer tissue using TA367021 (CRKL Antibody) at dilution 1/25 (Original magnification: ×200)



Immunohistochemistry of paraffin-embedded Human thyroid cancer tissue using TA367021 (CRKL Antibody) at dilution 1/25, treated with synthetic peptide. (Original magnification: ×200)