

Product datasheet for **TA367017**

HID1 Rabbit Polyclonal Antibody

Product data:

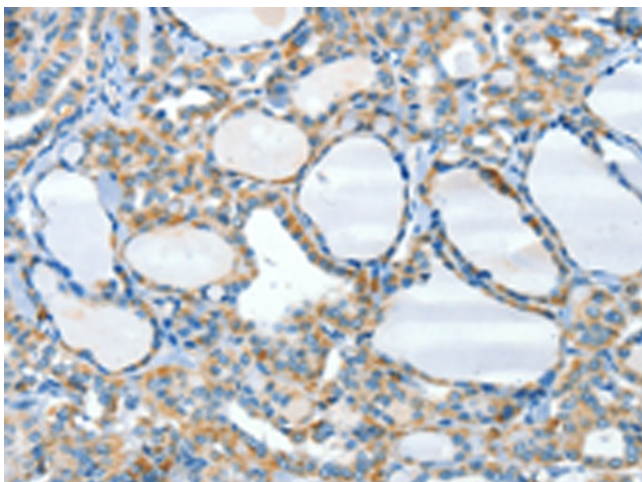
| | |
|-----------------------|---------------------------------------------------------------------------------------------|
| Product Type: | Primary Antibodies |
| Applications: | IHC |
| Recommended Dilution: | IHC: 25-100 Positive control: Human thyroid cancer Predicted cell location: Cytoplasm |
| Reactivity: | Human, Mouse |
| Host: | Rabbit |
| Isotype: | IgG |
| Clonality: | Polyclonal |
| Immunogen: | Synthetic peptide of human HID1 |
| Formulation: | pH7.4 PBS, 0.05% NaN ₃ , 40% Glycerol |
| Concentration: | lot specific |
| Purification: | Antigen affinity purification |
| Conjugation: | Unconjugated |
| Storage: | Store at -20°C. |
| Stability: | 1 year |
| Gene Name: | HID1 domain containing |
| Database Link: | Entrez Gene 283987 Human Q8IV36 |

Background: C17orf28 (chromosome 17 open reading frame 28) is a 788 amino acid multi-pass membrane protein that is expressed in heart, skeletal muscle, colon, spleen, kidney, liver, small intestine and lung. C17orf28 may be involved in the development of cancers in a broad range of tissues. Existing as three alternatively spliced isoforms, C17orf28 is encoded by a gene mapping to human chromosome 17, which makes up over 2.5% of the human genome with about 81 million bases encoding over 1,200 genes. Two key tumor suppressor genes are associated with chromosome 17, namely, p53 and BRCA1.

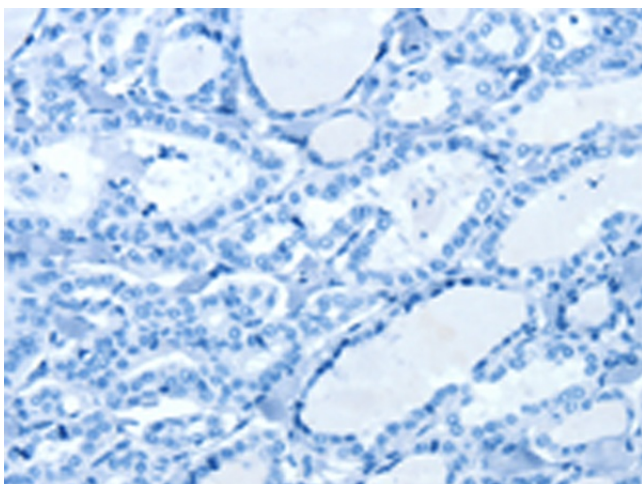
Synonyms: C630004H02Rik



[View online »](#)

Product images:

Immunohistochemistry of paraffin-embedded Human thyroid cancer tissue using TA367017 (HID1 Antibody) at dilution 1/50 (Original magnification: $\times 200$)



Immunohistochemistry of paraffin-embedded Human thyroid cancer tissue using TA367017 (HID1 Antibody) at dilution 1/50, treated with synthetic peptide. (Original magnification: $\times 200$)