

Product datasheet for **TA367011**

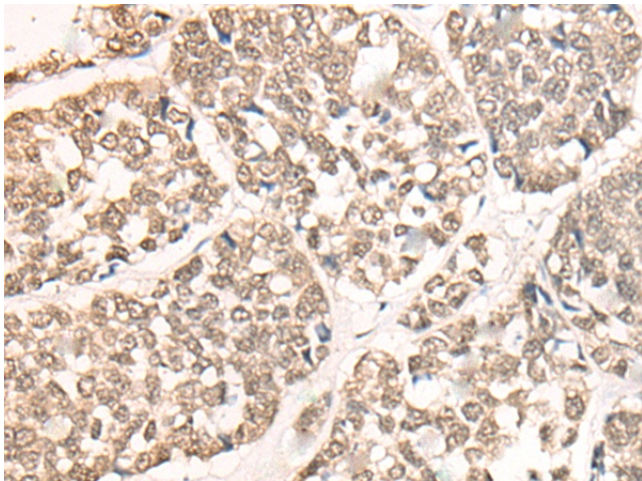
CHFR Rabbit Polyclonal Antibody

Product data:

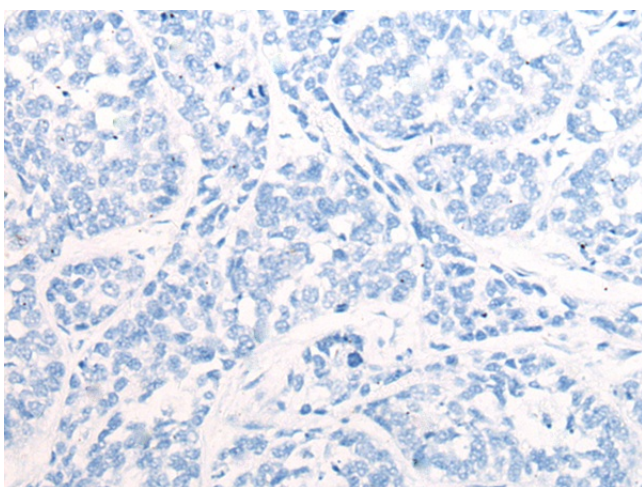
Product Type:	Primary Antibodies
Applications:	IHC
Recommended Dilution:	IHC: 25-100 Positive control: Human esophagus cancer Predicted cell location: Nucleus
Reactivity:	Human, Mouse
Host:	Rabbit
Isotype:	IgG
Clonality:	Polyclonal
Immunogen:	Synthetic peptide of human CHFR
Formulation:	pH7.4 PBS, 0.05% NaN ₃ , 40% Glycerol
Concentration:	lot specific
Purification:	Antigen affinity purification
Conjugation:	Unconjugated
Storage:	Store at -20°C.
Stability:	1 year
Gene Name:	checkpoint with forkhead and ring finger domains, E3 ubiquitin protein ligase
Database Link:	Entrez Gene 55743 Human Q96EP1
Background:	This gene encodes an E3 ubiquitin-protein ligase required for the maintenance of the antephasis checkpoint that regulates cell cycle entry into mitosis and, therefore, may play a key role in cell cycle progression and tumorigenesis. The encoded protein has an N-terminal forkhead-associated domain, a central RING-finger domain, and a cysteine-rich C-terminal region. Alternatively spliced transcript variants that encode different protein isoforms have been described.
Synonyms:	FLJ10796; FLJ33629; RNF116; RNF196



[View online »](#)

Product images:

Immunohistochemistry of paraffin-embedded Human esophagus cancer tissue using TA367011 (CHFR Antibody) at dilution 1/30 (Original magnification: $\times 200$)



Immunohistochemistry of paraffin-embedded Human esophagus cancer tissue using TA367011 (CHFR Antibody) at dilution 1/30, treated with synthetic peptide. (Original magnification: $\times 200$)