

Product datasheet for **TA367009**

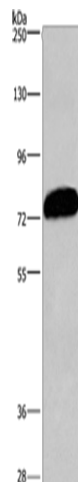
CDCP1 Rabbit Polyclonal Antibody

Product data:

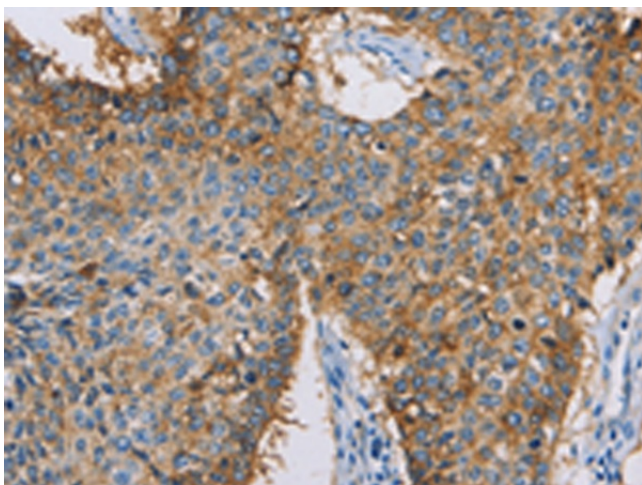
Product Type:	Primary Antibodies
Applications:	IHC, WB
Recommended Dilution:	WB: 1000-5000 WB positive control: PC3 cells IHC: 50-200 Positive control: Human lung cancer Predicted cell location: Cytoplasm
Reactivity:	Human
Host:	Rabbit
Isotype:	IgG
Clonality:	Polyclonal
Immunogen:	Synthetic peptide of human CDCP1
Formulation:	pH7.4 PBS, 0.05% NaN ₃ , 40% Glycerol
Concentration:	lot specific
Purification:	Antigen affinity purification
Conjugation:	Unconjugated
Storage:	Store at -20°C.
Stability:	1 year
Predicted Protein Size:	93 kDa
Gene Name:	CUB domain containing protein 1
Database Link:	Entrez Gene 64866 Human Q9H5V8
Background:	This gene encodes a transmembrane protein which contains three extracellular CUB domains and acts as a substrate for Src family kinases. The protein plays a role in the tyrosine phosphorylation-dependent regulation of cellular events that are involved in tumor invasion and metastasis. Alternative splicing results in multiple transcript variants of this gene.
Synonyms:	CD318; SIMA135; TRASK



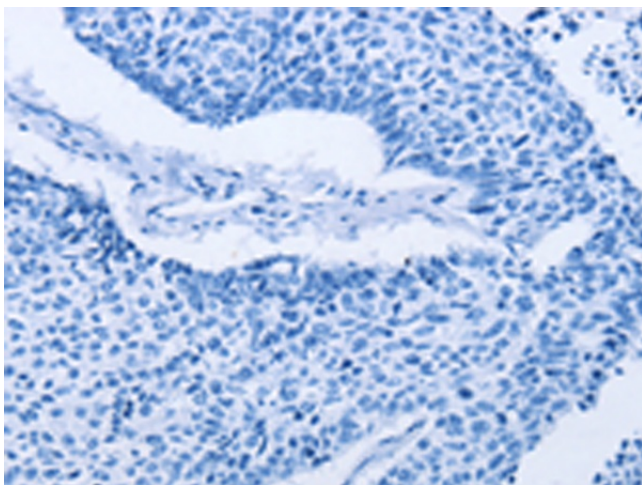
[View online »](#)

Product images:

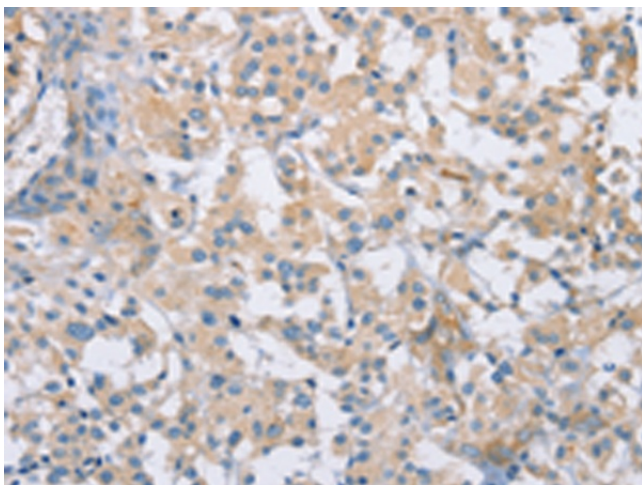
Gel: 6%SDS-PAGE
Lysate: 40 µg
Lane: PC3 cells
Primary antibody: TA367009 (CDCP1 Antibody) at dilution 1/1100
Secondary antibody: Goat anti rabbit IgG at 1/8000 dilution
Exposure time: 30 seconds



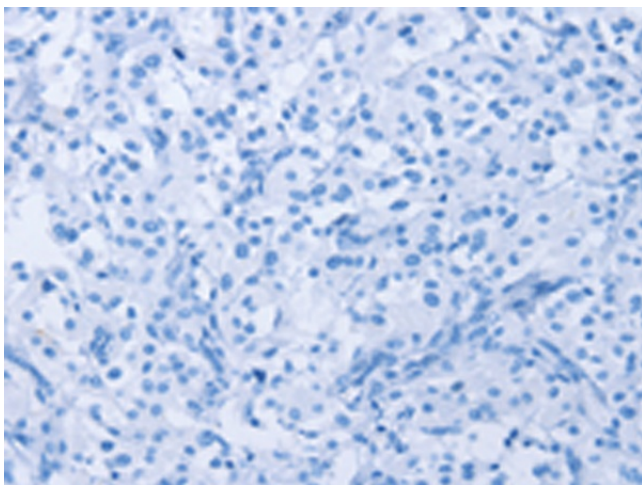
Immunohistochemistry of paraffin-embedded Human lung cancer tissue using TA367009 (CDCP1 Antibody) at dilution 1/50 (Original magnification: ×200)



Immunohistochemistry of paraffin-embedded Human lung cancer tissue using TA367009 (CDCP1 Antibody) at dilution 1/50, treated with synthetic peptide. (Original magnification: $\times 200$)



Immunohistochemistry of paraffin-embedded Human thyroid cancer tissue using TA367009 (CDCP1 Antibody) at dilution 1/50 (Original magnification: $\times 200$)



Immunohistochemistry of paraffin-embedded Human thyroid cancer tissue using TA367009 (CDCP1 Antibody) at dilution 1/50, treated with synthetic peptide. (Original magnification: $\times 200$)