

## Product datasheet for **TA367006**

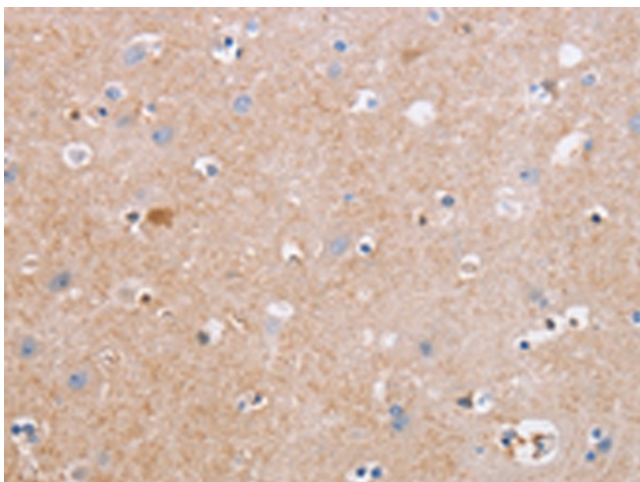
### CDC7 Rabbit Polyclonal Antibody

#### Product data:

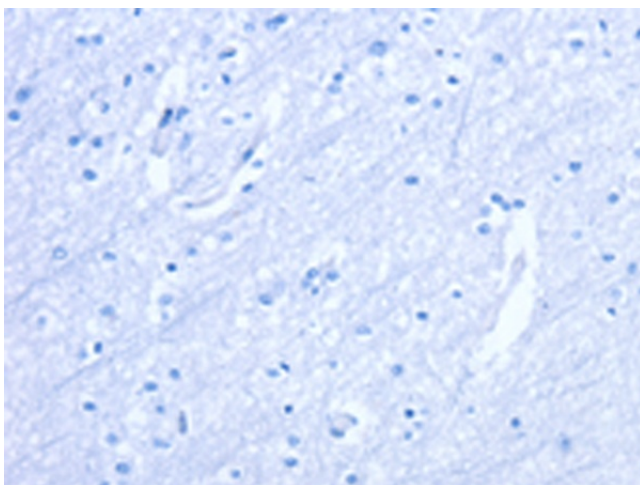
Product Type:	Primary Antibodies
Applications:	IHC
Recommended Dilution:	IHC: 25-100 Positive control: Human brain Predicted cell location: Cytoplasm
Reactivity:	Human, Mouse
Host:	Rabbit
Isotype:	IgG
Clonality:	Polyclonal
Immunogen:	Synthetic peptide of human CDC7
Formulation:	pH7.4 PBS, 0.05% NaN <sub>3</sub> , 40% Glycerol
Concentration:	lot specific
Purification:	Antigen affinity purification
Conjugation:	Unconjugated
Storage:	Store at -20°C.
Stability:	1 year
Gene Name:	cell division cycle 7
Database Link:	<a href="#">Entrez Gene 8317 Human O00311</a>
Background:	This gene encodes a cell division cycle protein with kinase activity that is critical for the G1/S transition. The yeast homolog is also essential for initiation of DNA replication as cell division occurs. Overexpression of this gene product may be associated with neoplastic transformation for some tumors. Multiple alternatively spliced transcript variants that encode the same protein have been detected.
Synonyms:	CDC7L1; HsCDC7; Hsk1; huCDC7; MGC117361; MGC126237; MGC126238



[View online »](#)

**Product images:**

Immunohistochemistry of paraffin-embedded Human brain tissue using TA367006 (CDC7 Antibody) at dilution 1/50 (Original magnification: ×200)



Immunohistochemistry of paraffin-embedded Human brain tissue using TA367006 (CDC7 Antibody) at dilution 1/50, treated with synthetic peptide. (Original magnification: ×200)