

Product datasheet for **TA367004S**

CDC27 Rabbit Polyclonal Antibody

Product data:

| | |
|-------------------------|---------------------------------------------------------------------------------------------------------------------------------------------|
| Product Type: | Primary Antibodies |
| Applications: | IHC, WB |
| Recommended Dilution: | WB: 200-1000 WB positive control: K562 cells IHC: 25-100 Positive control: Human lung cancer Predicted cell location: Cytoplasm |
| Reactivity: | Human, Mouse, Rat |
| Host: | Rabbit |
| Isotype: | IgG |
| Clonality: | Polyclonal |
| Immunogen: | Synthetic peptide of human CDC27 |
| Formulation: | pH7.4 PBS, 0.05% NaN ₃ , 40% Glycerol |
| Purification: | Antigen affinity purification |
| Conjugation: | Unconjugated |
| Storage: | Store at -20°C. |
| Stability: | 1 year |
| Predicted Protein Size: | 92 kDa |
| Gene Name: | cell division cycle 27 |
| Database Link: | Entrez Gene 996 Human P30260 |

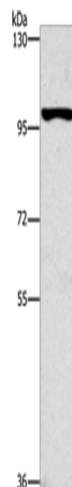
Background: The protein encoded by this gene shares strong similarity with *Saccharomyces cerevisiae* protein Cdc27, and the gene product of *Schizosaccharomyces pombe* nuc 2. This protein is a component of anaphase-promoting complex (APC), which is composed of eight protein subunits and highly conserved in eucaryotic cells. APC catalyzes the formation of cyclin B-ubiquitin conjugate that is responsible for the ubiquitin-mediated proteolysis of B-type cyclins. This protein and 3 other members of the APC complex contain the TPR (tetratricopeptide repeat), a protein domain important for protein-protein interaction.



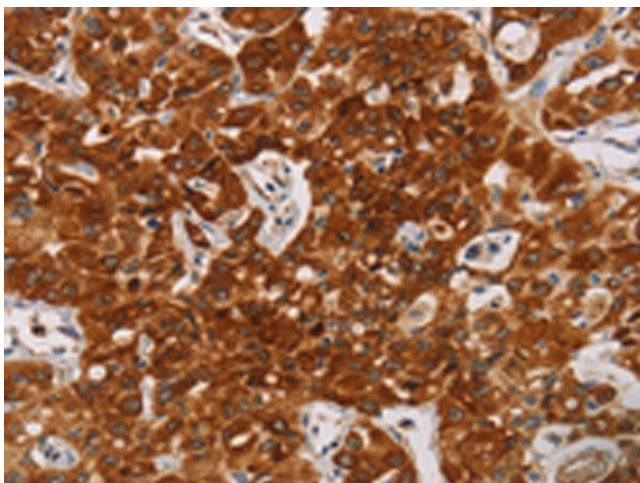
[View online »](#)

Synonyms: APC3; CDC27Hs; D0S1430E; D17S978E; H-NUC; HNUC

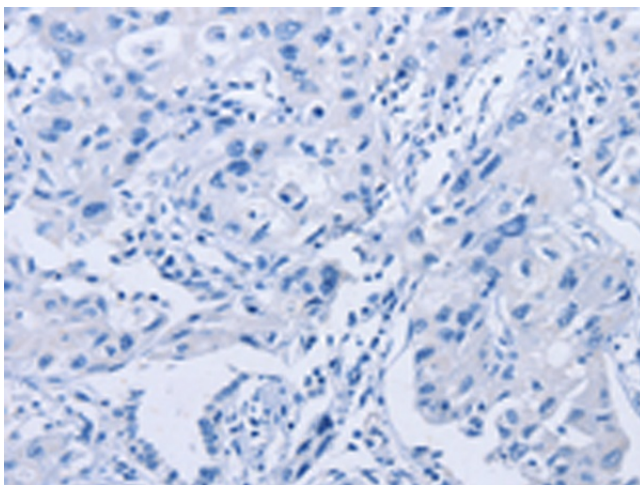
Product images:



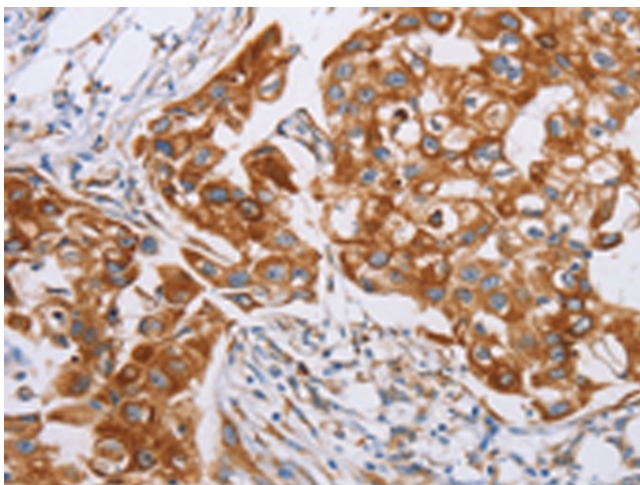
Gel: 6%SDS-PAGE
Lysate: 40 μ g
Lane: K562 cells
Primary antibody: [TA367004] (CDC27 Antibody) at dilution 1/400
Secondary antibody: Goat anti rabbit IgG at 1/8000 dilution
Exposure time: 1 minute



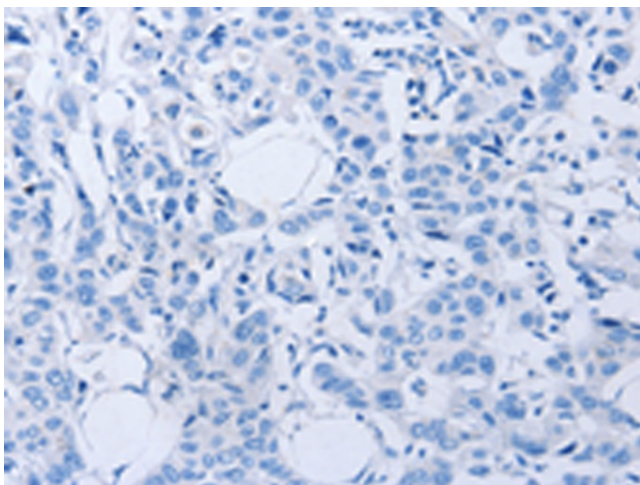
Immunohistochemistry of paraffin-embedded Human lung cancer tissue using [TA367004] (CDC27 Antibody) at dilution 1/20 (Original magnification: \times 200)



Immunohistochemistry of paraffin-embedded Human lung cancer tissue using [TA367004] (CDC27 Antibody) at dilution 1/20, treated with synthetic peptide. (Original magnification: ×200)



Immunohistochemistry of paraffin-embedded Human breast cancer tissue using [TA367004] (CDC27 Antibody) at dilution 1/20 (Original magnification: ×200)



Immunohistochemistry of paraffin-embedded Human breast cancer tissue using [TA367004] (CDC27 Antibody) at dilution 1/20, treated with synthetic peptide. (Original magnification: ×200)