

Product datasheet for **TA366999**

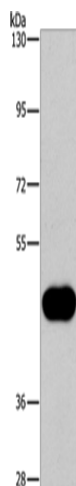
CD38 Rabbit Polyclonal Antibody

Product data:

Product Type:	Primary Antibodies
Applications:	WB
Recommended Dilution:	WB: 500-2000 WB positive control: Raji cells
Reactivity:	Human
Host:	Rabbit
Isotype:	IgG
Clonality:	Polyclonal
Immunogen:	Synthetic peptide of human CD38
Formulation:	pH7.4 PBS, 0.05% NaN ₃ , 40% Glycerol
Concentration:	lot specific
Purification:	Antigen affinity purification
Conjugation:	Unconjugated
Storage:	Store at -20°C.
Stability:	1 year
Predicted Protein Size:	34 kDa
Gene Name:	CD38 molecule
Database Link:	Entrez Gene 952 Human P28907
Background:	CD38 (cluster of differentiation 38), also known as cyclic ADP ribose hydrolase is a glycoprotein found on the surface of many immune cells (white blood cells), including CD4+, CD8+, B lymphocytes and natural killer cells. CD38 also functions in cell adhesion, signal transduction and calcium signaling. In humans, the CD38 protein is encoded by the CD38 gene which located on chromosome 4.
Synonyms:	T10



[View online »](#)

Product images:

Gel: 6%SDS-PAGE

Lysate: 40 µg

Lane: Raji cells

Primary antibody: TA366999 (CD38 Antibody) at dilution 1/260

Secondary antibody: Goat anti rabbit IgG at 1/8000 dilution

Exposure time: 3 minutes