

## Product datasheet for **TA366991S**

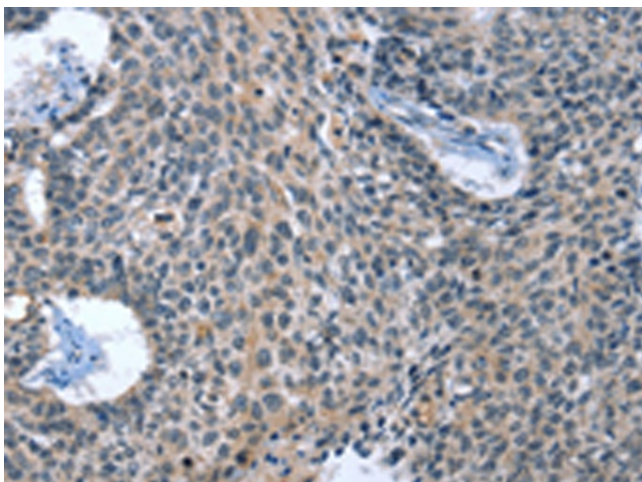
### CAGE1 Rabbit Polyclonal Antibody

#### Product data:

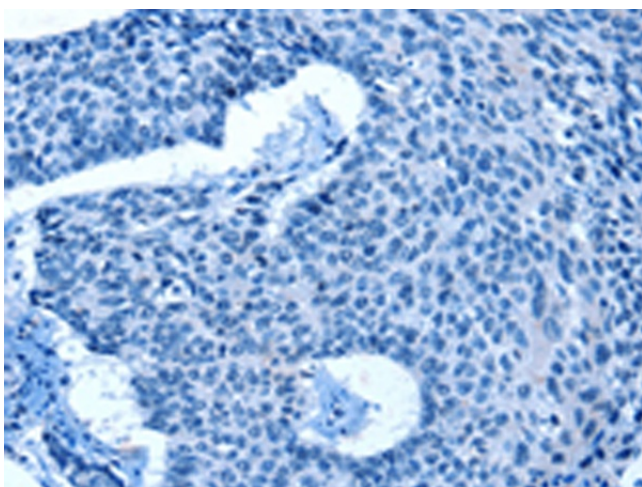
Product Type:	Primary Antibodies
Applications:	IHC
Recommended Dilution:	IHC: 15-50 Positive control: Human lung cancer Predicted cell location: Cytoplasm
Reactivity:	Human
Host:	Rabbit
Isotype:	IgG
Clonality:	Polyclonal
Immunogen:	Synthetic peptide of human CAGE1
Formulation:	pH7.4 PBS, 0.05% NaN <sub>3</sub> , 40% Glycerol
Purification:	Antigen affinity purification
Conjugation:	Unconjugated
Storage:	Store at -20°C.
Stability:	1 year
Gene Name:	cancer antigen 1
Database Link:	<a href="#">Entrez Gene 285782 Human Q8TC20</a>
Background:	CAGE1, also known as CT3; CT95; CTAG3; bA69L16.7, is a 639-amino acid protein. It shares 76% sequence identity with a monkey homolog. RT-PCR analysis detected testis-specific expression among normal tissues and wide expression among various cancer tissues and cancer cell lines including those from cervical, melanoma, hepatic, renal, myeloma, and breast cancers. CTAG3 was overexpressed in cancer tissues compared with surrounding noncancerous tissues. Transfection experiments with a GFP-CTAG3 construct indicated a predominantly nuclear localization.
Synonyms:	bA69L16.7; CAGE-1; CT3; CT95; CTAG3; FLJ40441

[View online »](#)

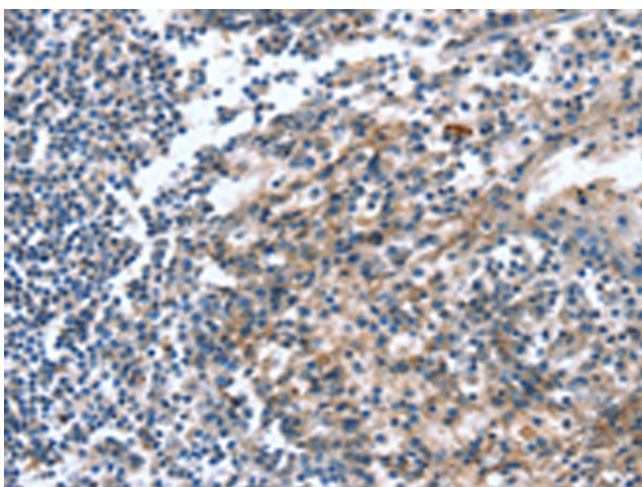
## Product images:



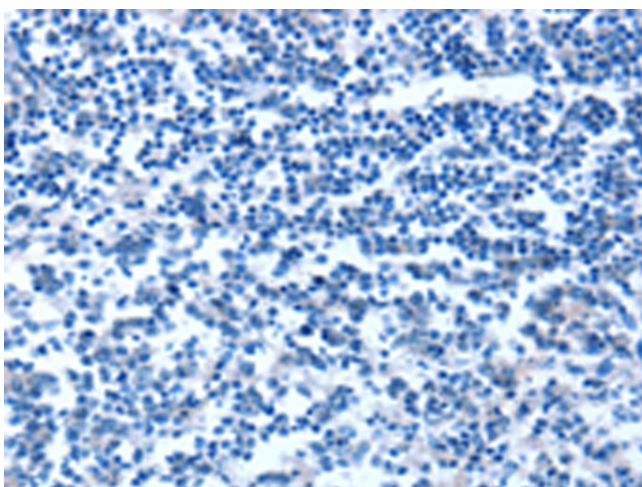
Immunohistochemistry of paraffin-embedded Human lung cancer tissue using [TA366991] (CAGE1 Antibody) at dilution 1/15 (Original magnification: ×200)



Immunohistochemistry of paraffin-embedded Human lung cancer tissue using [TA366991] (CAGE1 Antibody) at dilution 1/15, treated with synthetic peptide. (Original magnification: ×200)



Immunohistochemistry of paraffin-embedded Human tonsil tissue using [TA366991] (CAGE1 Antibody) at dilution 1/15 (Original magnification: ×200)



Immunohistochemistry of paraffin-embedded Human tonsil tissue using [TA366991] (CAGE1 Antibody) at dilution 1/15, treated with synthetic peptide. (Original magnification: ×200)