

Product datasheet for **TA366980**

BCAS4 Rabbit Polyclonal Antibody

Product data:

Product Type:	Primary Antibodies
Applications:	IHC
Recommended Dilution:	IHC: 15-50 Positive control: Human thyroid cancer Predicted cell location: Cytoplasm
Reactivity:	Human
Host:	Rabbit
Isotype:	IgG
Clonality:	Polyclonal
Immunogen:	Synthetic peptide of human BCAS4
Formulation:	pH7.4 PBS, 0.05% NaN ₃ , 40% Glycerol
Concentration:	lot specific
Purification:	Antigen affinity purification
Conjugation:	Unconjugated
Storage:	Store at -20°C.
Stability:	1 year
Gene Name:	breast carcinoma amplified sequence 4
Database Link:	Entrez Gene 55653 Human Q8TDM0



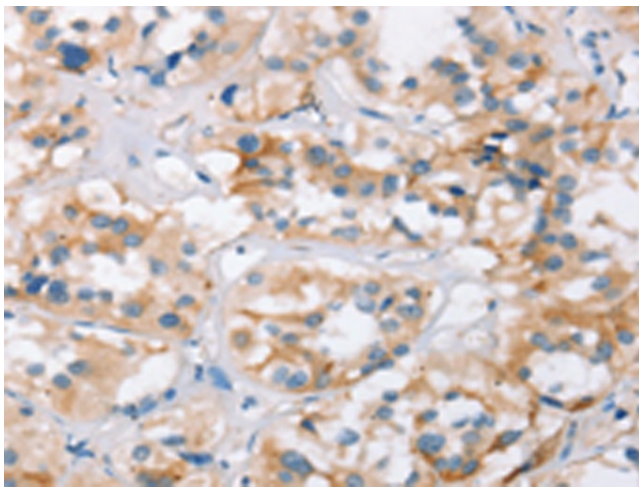
[View online »](#)

Background:

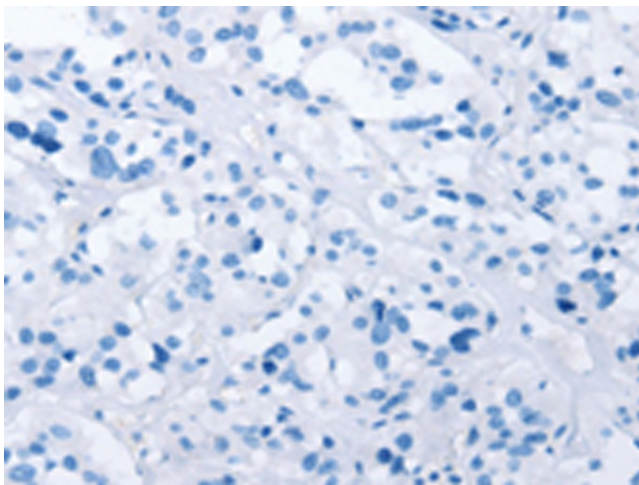
The gene encoding BCAS4 (Breast carcinoma-amplified sequence 4), a 211 amino acid protein, is found in a region on chromosome 20 that is frequently amplified in human breast cancer. This 20q13 locus amplification is found in 12%–39% of primary breast tumors, which correlates with a 17q23 locus amplification that is found in 20% of primary breast tumors. The amplification and translocation between the BCAS4 gene and the BCAS3 gene, with a 17q23 locus, results in a fusion transcript that is overexpressed in MCF-7 cells. Also, deletion of chromosomal region 20q13.13-q13.2 and resultant deletion of BCAS4, as well as three other genes, is the cause of Okinohara syndrome, a disease characterized by ocular and upper limb anomalies. BCAS4 is normally expressed in thymus, kidney, spleen, placenta and brain. There are three isoforms of BCAS4 which are produced as a result of alternative splicing events.

Synonyms:

CNOL; FLJ20495

Product images:

Immunohistochemistry of paraffin-embedded Human thyroid cancer tissue using TA366980 (BCAS4 Antibody) at dilution 1/25 (Original magnification: $\times 200$)



Immunohistochemistry of paraffin-embedded Human thyroid cancer tissue using TA366980 (BCAS4 Antibody) at dilution 1/25, treated with synthetic peptide. (Original magnification: $\times 200$)