

Product datasheet for **TA366979S**

TFII I (GTF2I) Rabbit Polyclonal Antibody

Product data:

Product Type:	Primary Antibodies
Applications:	IHC, WB
Recommended Dilution:	WB: 500-2000 WB positive control: Hela, 293T, Raji and 231 cells IHC: 50-200 Positive control: Human liver cancer Predicted cell location: Nucleus
Reactivity:	Human, Mouse, Rat
Host:	Rabbit
Isotype:	IgG
Clonality:	Polyclonal
Immunogen:	Synthetic peptide of human GTF2I
Formulation:	pH7.4 PBS, 0.05% NaN ₃ , 40% Glycerol
Purification:	Antigen affinity purification
Conjugation:	Unconjugated
Storage:	Store at -20°C.
Stability:	1 year
Predicted Protein Size:	112 kDa
Gene Name:	general transcription factor Iii
Database Link:	Entrez Gene 2969 Human P78347

Background: This gene encodes a phosphoprotein containing six characteristic repeat motifs. The encoded protein binds to the initiator element (Inr) and E-box element in promoters and functions as a regulator of transcription. This locus, along with several other neighboring genes, is deleted in Williams-Beuren syndrome. There are many closely related genes and pseudogenes for this gene on chromosome 7. This gene also has pseudogenes on chromosomes 9, 13, and 21. Alternatively spliced transcript variants encoding multiple isoforms have been observed.

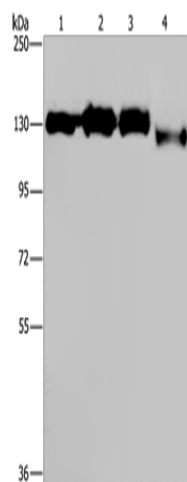


[View online »](#)

Synonyms:

BAP-135; BAP135; BTKAP1; DIWS; FLJ38776; FLJ56355; GTFII-I; IB291; OTTHUMP00000209509; SPIN; TFII-I; WBS; WBSR6

Product images:



Gel: 6%SDS-PAGE

Lysate: 40 µg

Lane 1-4: HeLa cells

293T cells

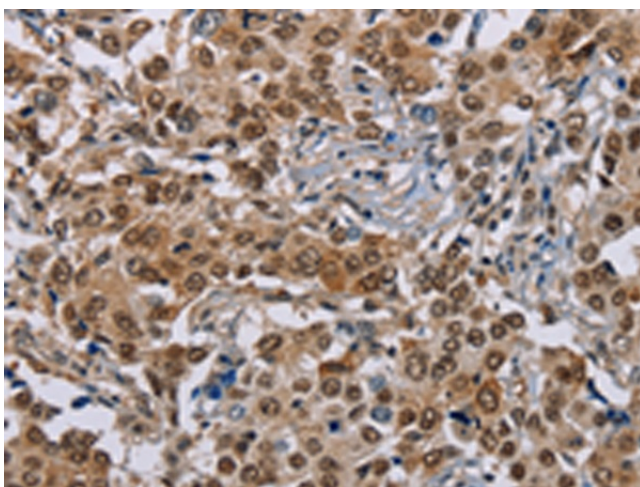
Raji cells

231 cells

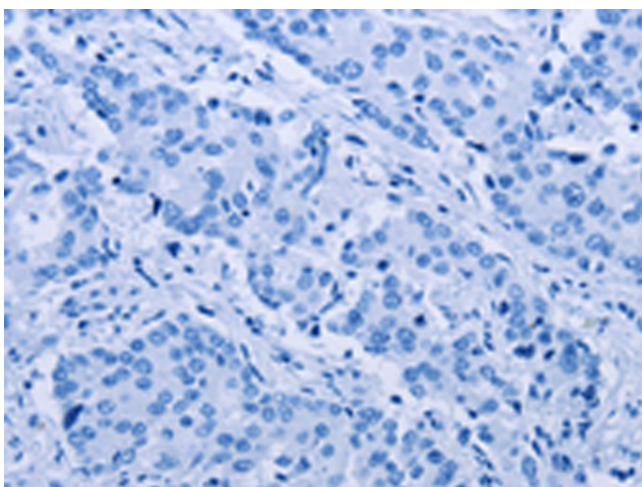
Primary antibody: [TA366979] (GTF2I Antibody) at dilution 1/400

Secondary antibody: Goat anti rabbit IgG at 1/8000 dilution

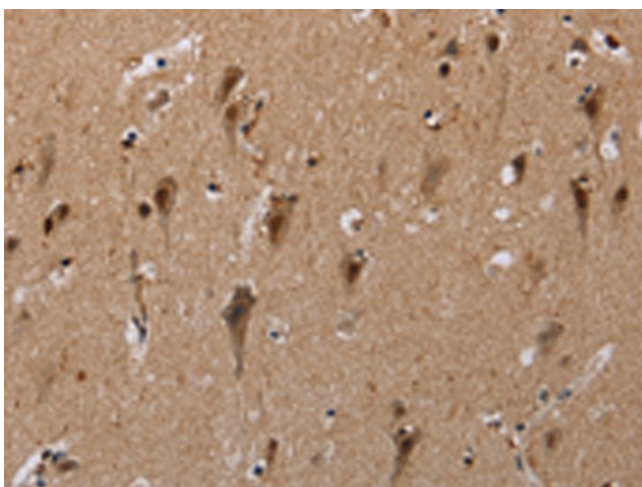
Exposure time: 10 seconds



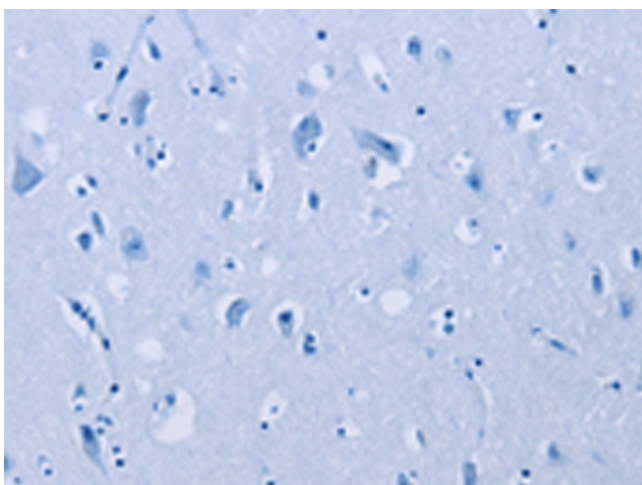
Immunohistochemistry of paraffin-embedded Human liver cancer tissue using [TA366979] (GTF2I Antibody) at dilution 1/40 (Original magnification: x200)



Immunohistochemistry of paraffin-embedded Human liver cancer tissue using [TA366979] (GTF2I Antibody) at dilution 1/40, treated with synthetic peptide. (Original magnification: $\times 200$)



Immunohistochemistry of paraffin-embedded Human brain tissue using [TA366979] (GTF2I Antibody) at dilution 1/40 (Original magnification: $\times 200$)



Immunohistochemistry of paraffin-embedded Human brain tissue using [TA366979] (GTF2I Antibody) at dilution 1/40, treated with synthetic peptide. (Original magnification: $\times 200$)