

Product datasheet for **TA366976S**

ANXA2R Rabbit Polyclonal Antibody

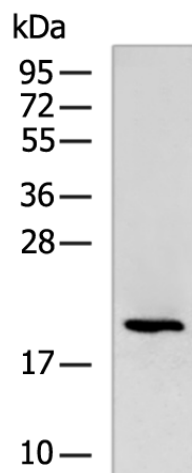
Product data:

Product Type:	Primary Antibodies
Applications:	IHC, WB
Recommended Dilution:	WB: 500-2000 WB positive control: Hela cell lysate IHC: 50-200 Positive control: Human liver cancer Predicted cell location: Cytoplasm
Reactivity:	Human
Host:	Rabbit
Isotype:	IgG
Clonality:	Polyclonal
Immunogen:	Synthetic peptide of human ANXA2R
Formulation:	pH7.4 PBS, 0.05% NaN ₃ , 40% Glycerol
Purification:	Antigen affinity purification
Conjugation:	Unconjugated
Storage:	Store at -20°C.
Stability:	1 year
Predicted Protein Size:	22 kDa
Gene Name:	annexin A2 receptor
Database Link:	Entrez Gene 389289 Human Q3ZCQ2
Background:	May act as a receptor for annexin II on marrow stromal cells to induce osteoclast formation.
Synonyms:	AX2R; AXIIR; C5orf39

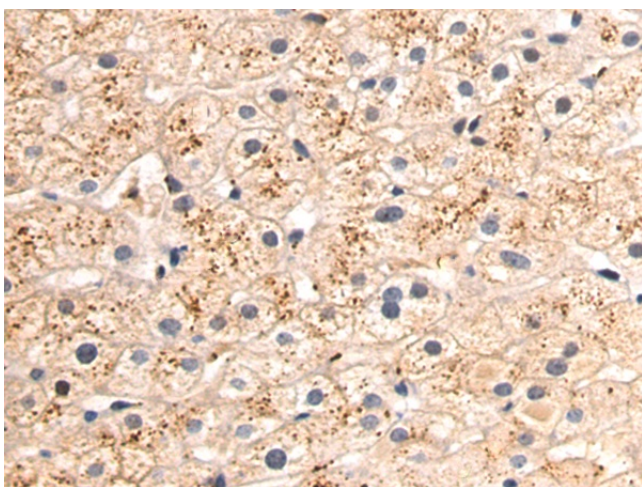


[View online »](#)

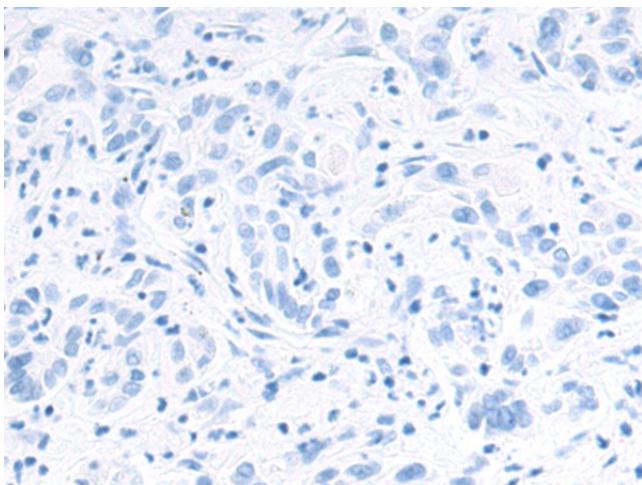
Product images:



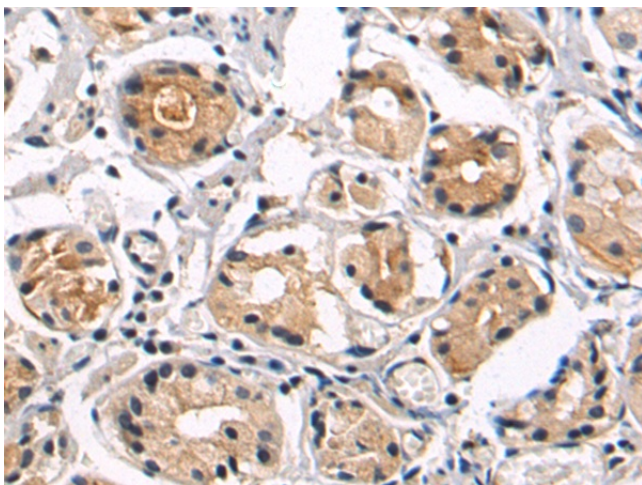
Gel: 12%SDS-PAGE
Lysate: 40 μ g
Lane: HeLa cell lysate
Primary antibody: [TA366976] (ANXA2R Antibody) at dilution 1/1000
Secondary antibody: Goat anti rabbit IgG at 1/5000 dilution
Exposure time: 3 minutes



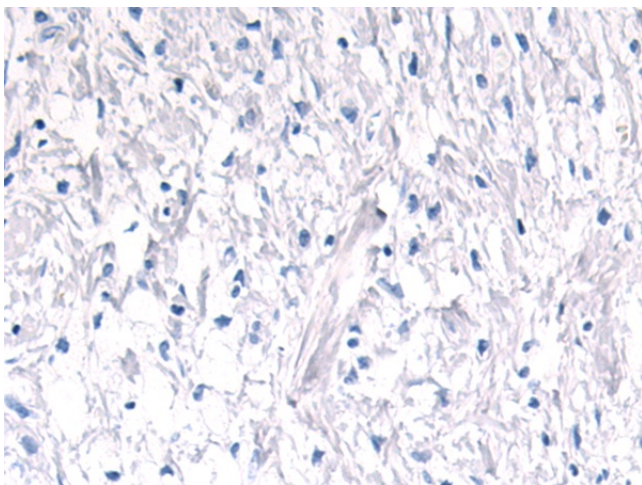
Immunohistochemistry of paraffin-embedded Human liver cancer tissue using [TA366976] (ANXA2R Antibody) at dilution 1/50 (Original magnification: \times 200)



Immunohistochemistry of paraffin-embedded Human liver cancer tissue using [TA366976] (ANXA2R Antibody) at dilution 1/50, treated with synthetic peptide. (Original magnification: $\times 200$)



Immunohistochemistry of paraffin-embedded Human gastric cancer tissue using [TA366976] (ANXA2R Antibody) at dilution 1/50 (Original magnification: $\times 200$)



Immunohistochemistry of paraffin-embedded Human gastric cancer tissue using [TA366976] (ANXA2R Antibody) at dilution 1/50, treated with synthetic peptide. (Original magnification: $\times 200$)