

## Product datasheet for **TA366954S**

### Caveolin 3 (CAV3) Rabbit Polyclonal Antibody

#### Product data:

Product Type:	Primary Antibodies
Applications:	IHC, WB
Recommended Dilution:	WB: 500-2000 WB positive control: Human fetal muscle tissue IHC: 25-100 Positive control: Human gastric cancer Predicted cell location: Cytoplasm
Reactivity:	Human
Host:	Rabbit
Isotype:	IgG
Clonality:	Polyclonal
Immunogen:	Synthetic peptide of human CAV3
Formulation:	pH7.4 PBS, 0.05% NaN <sub>3</sub> , 40% Glycerol
Purification:	Antigen affinity purification
Conjugation:	Unconjugated
Storage:	Store at -20°C.
Stability:	1 year
Predicted Protein Size:	17 kDa
Gene Name:	caveolin 3
Database Link:	<a href="#">Entrez Gene 859 Human P56539</a>



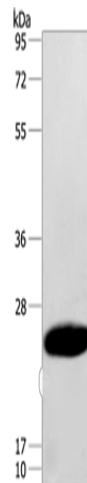
[View online »](#)

**Background:**

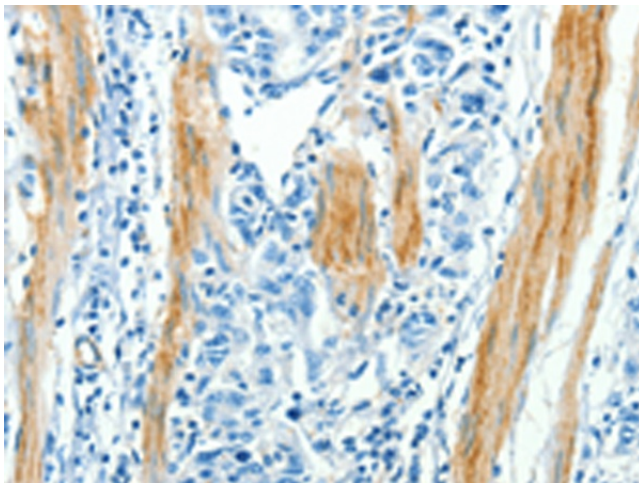
This gene encodes a caveolin family member, which functions as a component of the caveolae plasma membranes found in most cell types. Caveolin proteins are proposed to be scaffolding proteins for organizing and concentrating certain caveolin-interacting molecules. Mutations identified in this gene lead to interference with protein oligomerization or intracellular routing, disrupting caveolae formation and resulting in Limb-Girdle muscular dystrophy type-1C (LGMD-1C), hyperCKemia or rippling muscle disease (RMD). Alternative splicing has been identified for this locus, with inclusion or exclusion of a differentially spliced intron. In addition, transcripts utilize multiple polyA sites and contain two potential translation initiation sites.

**Synonyms:**

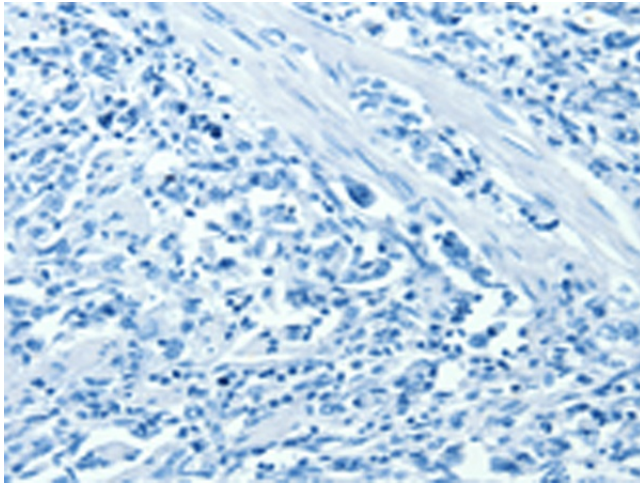
LGMD1C; LQT9; M-caveolin; MGC126100; MGC126101; MGC126129; VIP-21; VIP21

**Product images:**


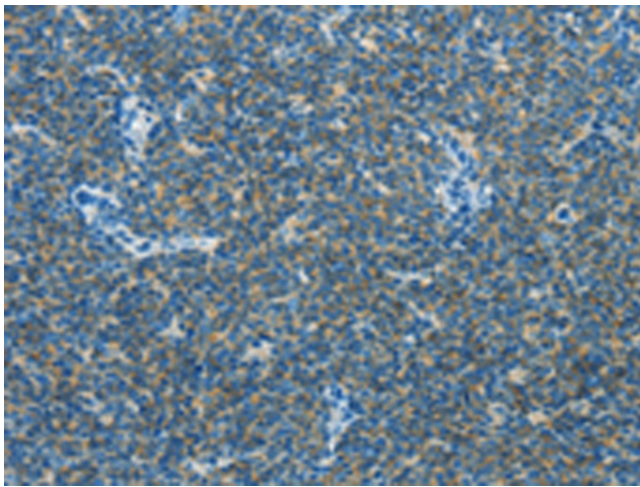
Gel: 10%SDS-PAGE  
 Lysate: 40 µg  
 Lane: Human fetal muscle tissue  
 Primary antibody: [TA366954] (CAV3 Antibody) at dilution 1/500  
 Secondary antibody: Goat anti rabbit IgG at 1/8000 dilution  
 Exposure time: 15 seconds



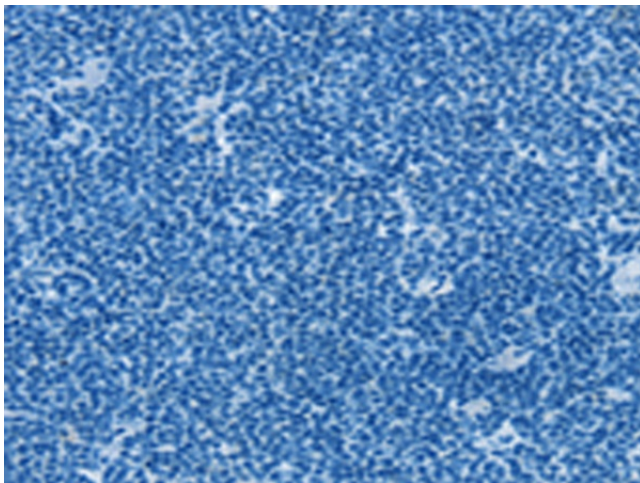
Immunohistochemistry of paraffin-embedded Human gastric cancer tissue using [TA366954] (CAV3 Antibody) at dilution 1/30 (Original magnification: ×200)



Immunohistochemistry of paraffin-embedded Human gastric cancer tissue using [TA366954] (CAV3 Antibody) at dilution 1/30, treated with synthetic peptide. (Original magnification: ×200)



Immunohistochemistry of paraffin-embedded Human lymphoma tissue using [TA366954] (CAV3 Antibody) at dilution 1/30 (Original magnification: ×200)



Immunohistochemistry of paraffin-embedded Human lymphoma tissue using [TA366954] (CAV3 Antibody) at dilution 1/30, treated with synthetic peptide. (Original magnification: ×200)