

Product datasheet for **TA366953**

ASPP1 (PPP1R13B) Rabbit Polyclonal Antibody

Product data:

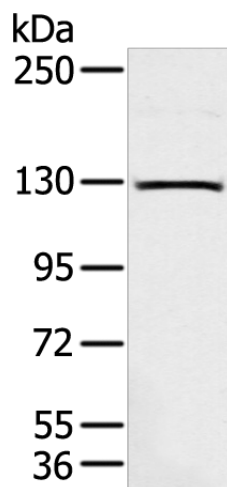
Product Type:	Primary Antibodies
Applications:	IHC, WB
Recommended Dilution:	WB: 200-1000 WB positive control: HepG2 cell IHC: 10-50 Positive control: Human prostate cancer Predicted cell location: Cytoplasm and Nucleus
Reactivity:	Human
Host:	Rabbit
Isotype:	IgG
Clonality:	Polyclonal
Immunogen:	Synthetic peptide of human PPP1R13B
Formulation:	pH7.4 PBS, 0.05% NaN ₃ , 40% Glycerol
Concentration:	lot specific
Purification:	Antigen affinity purification
Conjugation:	Unconjugated
Storage:	Store at -20°C.
Stability:	1 year
Predicted Protein Size:	120 kDa
Gene Name:	protein phosphatase 1 regulatory subunit 13B
Database Link:	Entrez Gene 23368 Human Q96KQ4
Background:	This gene encodes a member of the ASPP (apoptosis-stimulating protein of p53) family of p53 interacting proteins. The protein contains four ankyrin repeats and an SH3 domain involved in protein-protein interactions. ASPP proteins are required for the induction of apoptosis by p53-family proteins. They promote DNA binding and transactivation of p53-family proteins on the promoters of proapoptotic genes. Expression of this gene is regulated by the E2F transcription factor.



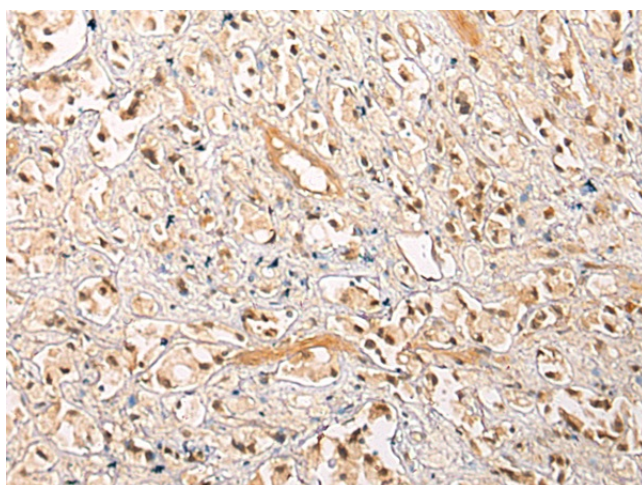
[View online >](#)

Synonyms: ASPP1; KIAA0771; p53BP2-like; p85

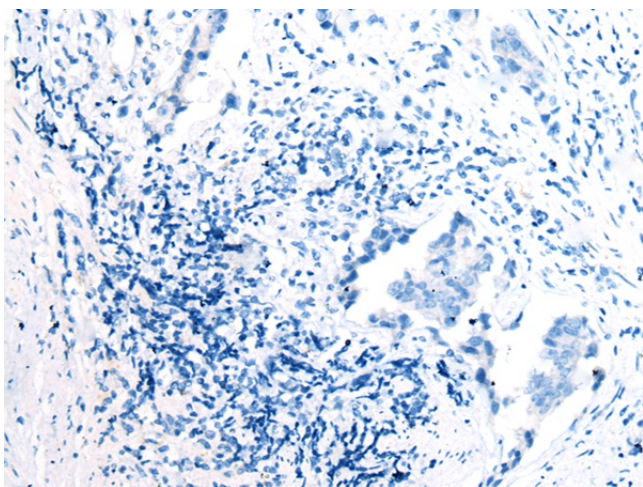
Product images:



Gel: 6%SDS-PAGE
Lysate: 40 μ g
Lane: HepG2 cell
Primary antibody: TA366953 (PPP1R13B Antibody) at dilution 1/300
Secondary antibody: Goat anti rabbit IgG at 1/8000 dilution
Exposure time: 5 seconds



Immunohistochemistry of paraffin-embedded Human prostate cancer tissue using TA366953 (PPP1R13B Antibody) at dilution 1/20 (Original magnification: \times 200)



Immunohistochemistry of paraffin-embedded Human prostate cancer tissue using TA366953 (PPP1R13B Antibody) at dilution 1/20, treated with synthetic peptide. (Original magnification: ×200)