

Product datasheet for **TA366947S**

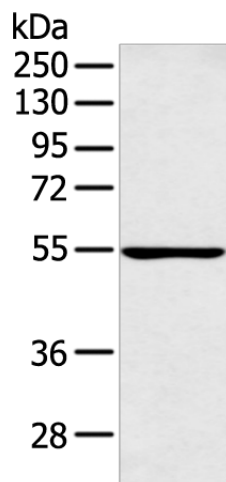
PFKFB4 Rabbit Polyclonal Antibody

Product data:

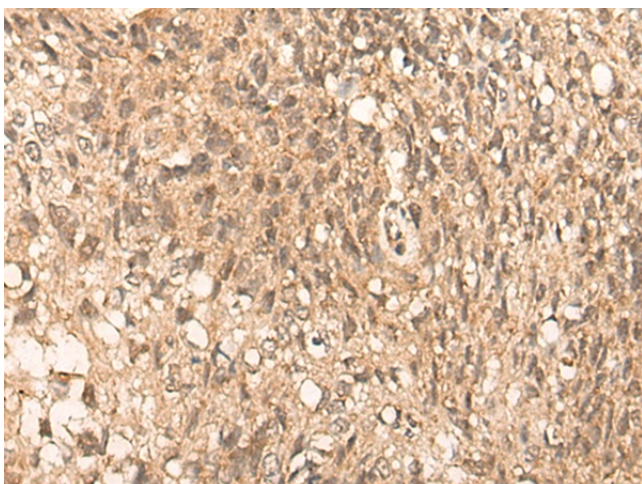
| | |
|-------------------------|--|
| Product Type: | Primary Antibodies |
| Applications: | IHC, WB |
| Recommended Dilution: | WB: 200-1000 WB positive control: Raji cell IHC: 25-100 Positive control: Human lung cancer Predicted cell location: Nucleus |
| Reactivity: | Human, Mouse, Rat |
| Host: | Rabbit |
| Isotype: | IgG |
| Clonality: | Polyclonal |
| Immunogen: | Synthetic peptide of human PFKFB4 |
| Formulation: | pH7.4 PBS, 0.05% NaN ₃ , 40% Glycerol |
| Purification: | Antigen affinity purification |
| Conjugation: | Unconjugated |
| Storage: | Store at -20°C. |
| Stability: | 1 year |
| Predicted Protein Size: | 54 kDa |
| Gene Name: | 6-phosphofructo-2-kinase/fructose-2,6-biphosphatase 4 |
| Database Link: | Entrez Gene 5210 Human Q16877 |
| Background: | 6-phosphofructo-2-kinase/fructose-2,6-biphosphatase 4 also known as PFKFB4 is an enzyme which in humans is encoded by the PFKFB4 gene. The bifunctional 6-phosphofructo-2-kinase (EC 2.7.1.105)/fructose-2,6-bisphosphatase (EC 3.1.3.46) (PFKFB) regulates the steady-state concentration of fructose 2,6-bisphosphate, an activator of a key regulatory enzyme of glycolysis, phosphofructokinase. |
| Synonyms: | 6-phosphofructo-2-kinase/fructose-2,6-biphosphatas |

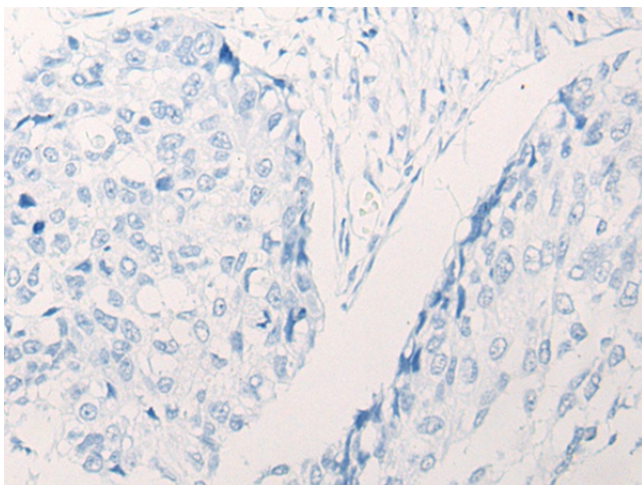


[View online »](#)

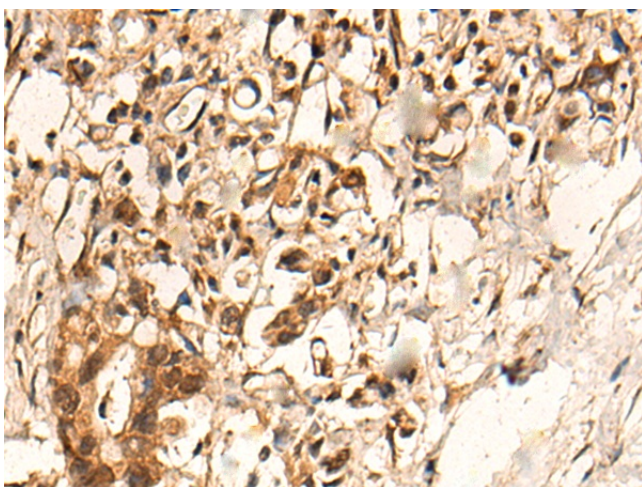
Product images:

Gel: 8%SDS-PAGE
Lysate: 40 µg
Lane: Raji cell
Primary antibody: [TA366947] (PFKFB4 Antibody) at dilution 1/300
Secondary antibody: Goat anti rabbit IgG at 1/8000 dilution
Exposure time: 1 minute

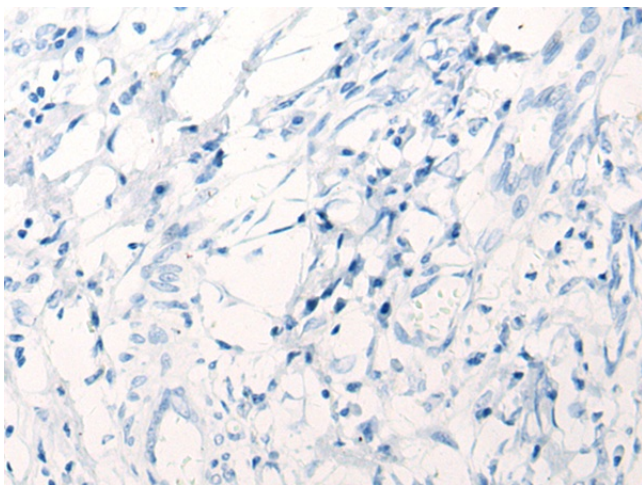




Immunohistochemistry of paraffin-embedded Human lung cancer tissue using [TA366947] (PFKFB4 Antibody) at dilution 1/35, treated with synthetic peptide. (Original magnification: $\times 200$)



Immunohistochemistry of paraffin-embedded Human gastric cancer tissue using [TA366947] (PFKFB4 Antibody) at dilution 1/35 (Original magnification: $\times 200$)



Immunohistochemistry of paraffin-embedded Human gastric cancer tissue using [TA366947] (PFKFB4 Antibody) at dilution 1/35, treated with synthetic peptide. (Original magnification: $\times 200$)