

## Product datasheet for **TA366944**

### CD133 (PROM1) Rabbit Polyclonal Antibody

#### Product data:

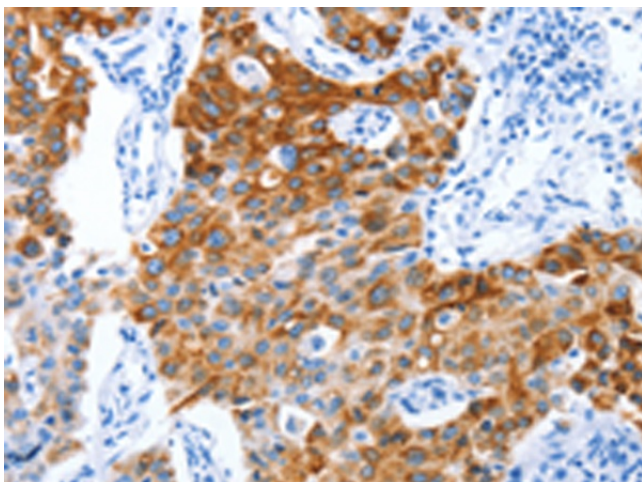
|                       |  |
|-----------------------|--|
| Product Type:         | Primary Antibodies   |
| Applications:         | IHC  |
| Recommended Dilution: | IHC: 25-100<br>Positive control: Human lung cancer<br>Predicted cell location: Cytoplasm |
| Reactivity:           | Human, Mouse   |
| Host:                 | Rabbit   |
| Isotype:              | IgG  |
| Clonality:            | Polyclonal   |
| Immunogen:            | Synthetic peptide of human PROM1   |
| Formulation:          | pH7.4 PBS, 0.05% NaN3, 40% Glycerol  |
| Concentration:        | lot specific   |
| Purification:         | Antigen affinity purification  |
| Conjugation:          | Unconjugated   |
| Storage:              | Store at -20°C.  |
| Stability:            | 1 year   |
| Gene Name:            | prominin 1   |
| Database Link:        | <a href="#">Entrez Gene 8842 Human O43490</a>  |

**Background:** This gene encodes a pentaspan transmembrane glycoprotein. The protein localizes to membrane protrusions and is often expressed on adult stem cells, where it is thought to function in maintaining stem cell properties by suppressing differentiation. Mutations in this gene have been shown to result in retinitis pigmentosa and Stargardt disease. Expression of this gene is also associated with several types of cancer. This gene is expressed from at least five alternative promoters that are expressed in a tissue-dependent manner. Multiple transcript variants encoding different isoforms have been found for this gene.

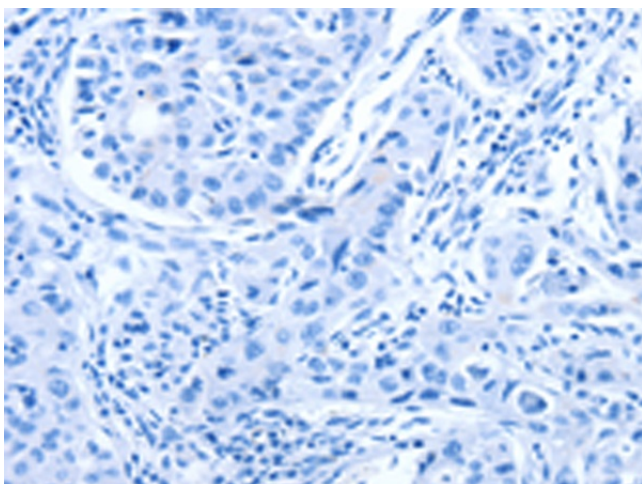
**Synonyms:** AC133; CD133; CORD12; hProminin; MCDR2; MSTP061; PROML1; RP41; STGD4



[View online »](#)

**Product images:**

Immunohistochemistry of paraffin-embedded Human lung cancer tissue using TA366944 (PROM1 Antibody) at dilution 1/40 (Original magnification:  $\times 200$ )



Immunohistochemistry of paraffin-embedded Human lung cancer tissue using TA366944 (PROM1 Antibody) at dilution 1/40, treated with synthetic peptide. (Original magnification:  $\times 200$ )