

## Product datasheet for **TA366943**

### ENT1 (SLC29A1) Rabbit Polyclonal Antibody

#### Product data:

Product Type:	Primary Antibodies
Applications:	IHC, WB
Recommended Dilution:	WB: 200-1000 WB positive control: Human placenta tissue IHC: 50-300 Positive control: Human liver cancer Predicted cell location: Cytoplasm or Nucleus
Reactivity:	Human, Mouse, Rat
Host:	Rabbit
Isotype:	IgG
Clonality:	Polyclonal
Immunogen:	Synthetic peptide of human SLC29A1
Formulation:	pH7.4 PBS, 0.05% NaN <sub>3</sub> , 40% Glycerol
Concentration:	lot specific
Purification:	Antigen affinity purification
Conjugation:	Unconjugated
Storage:	Store at -20°C.
Stability:	1 year
Predicted Protein Size:	50 kDa
Gene Name:	solute carrier family 29 member 1 (Augustine blood group)
Database Link:	<a href="#">Entrez Gene 2030 Human Q99808</a>

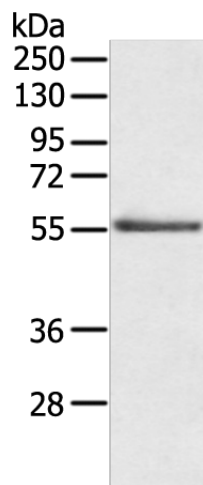
**Background:** This gene is a member of the equilibrative nucleoside transporter family. The gene encodes a transmembrane glycoprotein that localizes to the plasma and mitochondrial membranes and mediates the cellular uptake of nucleosides from the surrounding medium. The protein is categorized as an equilibrative (as opposed to concentrative) transporter that is sensitive to inhibition by nitrobenzylthioinosine (NBMPR).



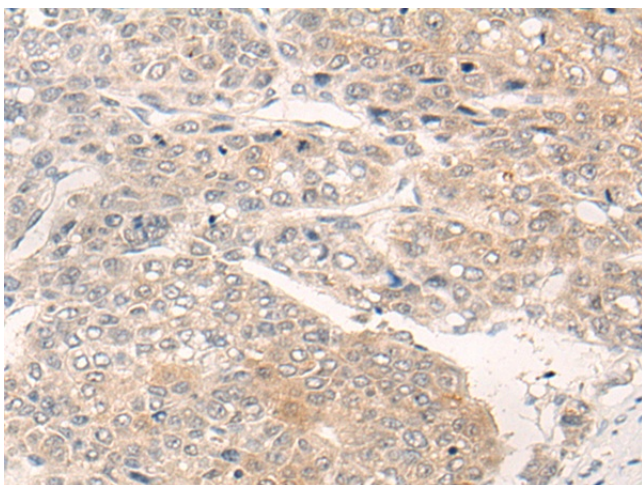
[View online »](#)

Synonyms: ENT1; MGC1465; MGC3778; OTTHUMP00000016509; OTTHUMP00000016510; OTTHUMP00000016511; OTTHUMP00000016512

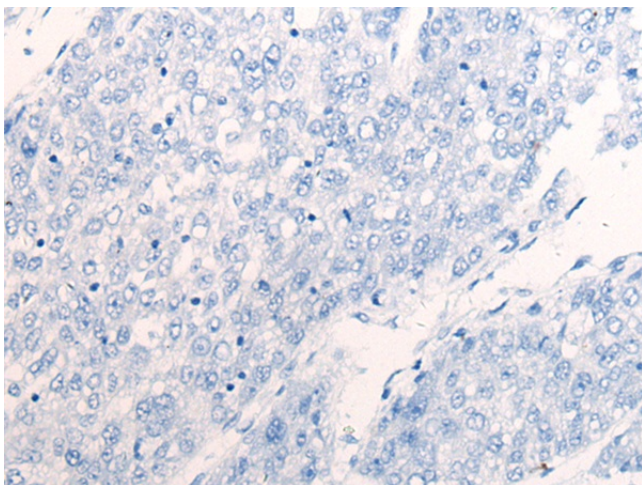
### Product images:



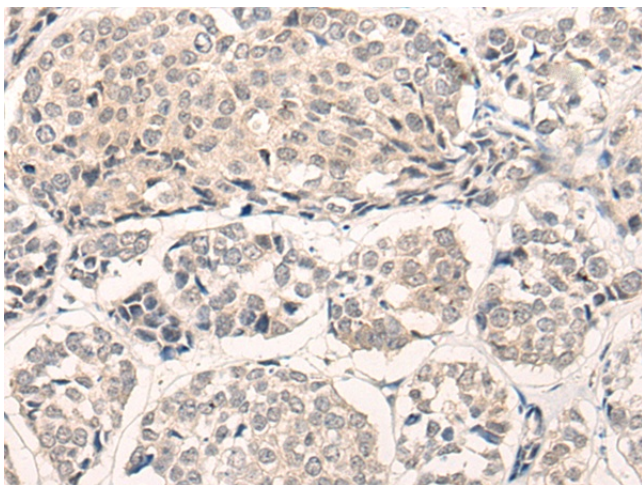
Gel: 8%SDS-PAGE  
Lysate: 40  $\mu$ g  
Lane: Human placenta tissue  
Primary antibody: TA366943 (SLC29A1 Antibody) at dilution 1/200  
Secondary antibody: Goat anti rabbit IgG at 1/8000 dilution  
Exposure time: 10 minutes



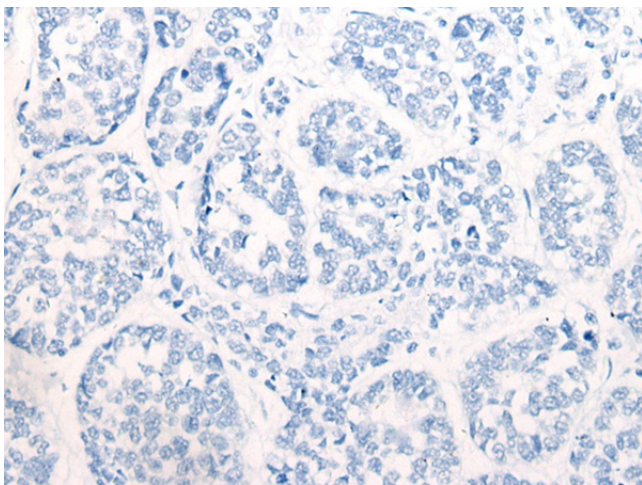
Immunohistochemistry of paraffin-embedded Human liver cancer tissue using TA366943 (SLC29A1 Antibody) at dilution 1/105 (Original magnification:  $\times$ 200)



Immunohistochemistry of paraffin-embedded Human liver cancer tissue using TA366943 (SLC29A1 Antibody) at dilution 1/105, treated with synthetic peptide. (Original magnification:  $\times 200$ )



Immunohistochemistry of paraffin-embedded Human esophagus cancer tissue using TA366943 (SLC29A1 Antibody) at dilution 1/105 (Original magnification:  $\times 200$ )



Immunohistochemistry of paraffin-embedded Human esophagus cancer tissue using TA366943 (SLC29A1 Antibody) at dilution 1/105, treated with synthetic peptide. (Original magnification:  $\times 200$ )