

## Product datasheet for **TA366934**

### PIP5KI gamma (PIP5K1C) Rabbit Polyclonal Antibody

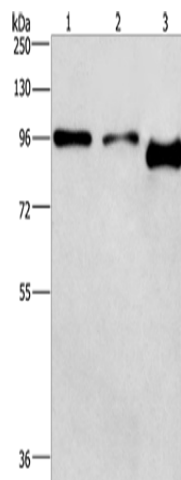
#### Product data:

Product Type:	Primary Antibodies
Applications:	WB
Recommended Dilution:	WB: 200-1000 WB positive control: A431 and hela cells,mouse brain tissue
Reactivity:	Human, Mouse, Rat
Host:	Rabbit
Isotype:	IgG
Clonality:	Polyclonal
Immunogen:	Synthetic peptide of human PIP5K1C
Formulation:	pH7.4 PBS, 0.05% NaN <sub>3</sub> , 40% Glycerol
Concentration:	lot specific
Purification:	Antigen affinity purification
Conjugation:	Unconjugated
Storage:	Store at -20°C.
Stability:	1 year
Predicted Protein Size:	73 kDa
Gene Name:	phosphatidylinositol-4-phosphate 5-kinase type 1 gamma
Database Link:	<a href="#">Entrez Gene 23396 Human O60331</a>
Background:	This locus encodes a type I phosphatidylinositol 4-phosphate 5-kinase. The encoded protein catalyzes phosphorylation of phosphatidylinositol 4-phosphate, producing phosphatidylinositol 4,5-bisphosphate. This enzyme is found at synapses and has been found to play roles in endocytosis and cell migration. Mutations at this locus have been associated with lethal congenital contractural syndrome. Alternatively spliced transcript variants encoding different isoforms have been described.
Synonyms:	KIAA0589; LCCS3; PIP5K-GAMMA; PIP5Kgamma; PIP5KIgamma; PIPKIg_v4; PtdIns(4)P-5-kinase; PtdInsPKIgamma



[View online »](#)

## Product images:



Gel: 10%SDS-PAGE  
Lysate: 40  $\mu$ g  
Lane 1-3: A431 cells  
hela cells  
mouse brain tissue  
Primary antibody: TA366934 (PIP5K1C Antibody)  
at dilution 1/500  
Secondary antibody: Goat anti rabbit IgG at  
1/8000 dilution  
Exposure time: 2 minutes