

## Product datasheet for **TA366923**

### Rb2 p130 (RBL2) Rabbit Polyclonal Antibody

#### Product data:

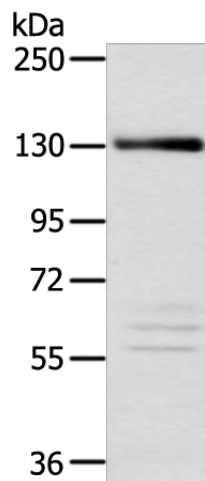
Product Type:	Primary Antibodies
Applications:	IHC, WB
Recommended Dilution:	WB: 200-1000 WB positive control: Lncap cell IHC: 30-150 Positive control: Human lung cancer Predicted cell location: Nucleus
Reactivity:	Human, Mouse, Rat
Host:	Rabbit
Isotype:	IgG
Clonality:	Polyclonal
Immunogen:	Synthetic peptide of human RBL2
Formulation:	pH7.4 PBS, 0.05% NaN <sub>3</sub> , 40% Glycerol
Concentration:	lot specific
Purification:	Antigen affinity purification
Conjugation:	Unconjugated
Storage:	Store at -20°C.
Stability:	1 year
Predicted Protein Size:	128 kDa
Gene Name:	RB transcriptional corepressor like 2
Database Link:	<a href="#">Entrez Gene 5934 Human Q08999</a>
Background:	Retinoblastoma-like protein 2 is a protein that in humans is encoded by the RBL2 gene. Key regulator of entry into cell division. Directly involved in heterochromatin formation by maintaining overall chromatin structure and, in particular, that of constitutive heterochromatin by stabilizing histone methylation. Recruits and targets histone methyltransferases SUV420H1 and SUV420H2, leading to epigenetic transcriptional repression. Controls histone H4 'Lys-20' trimethylation.



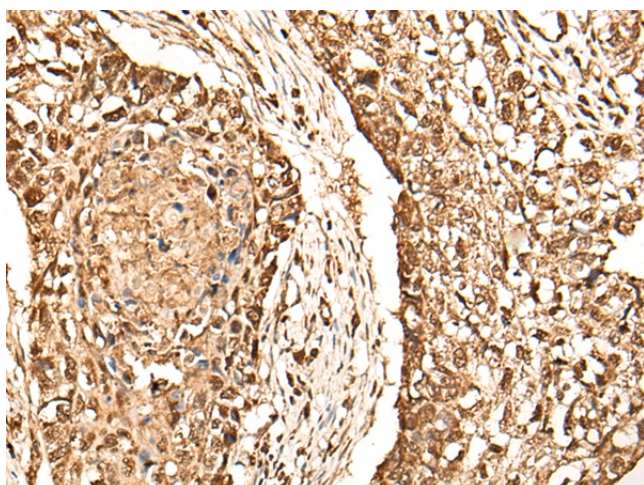
[View online »](#)

Synonyms: FLJ26459; p130; PRB2; Rb2; RBR-2

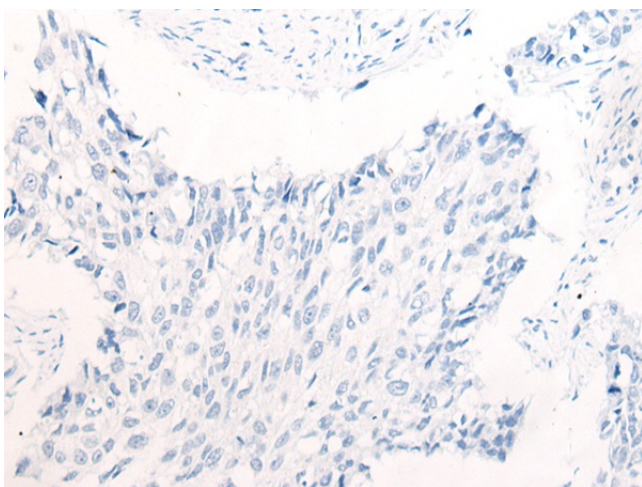
### Product images:



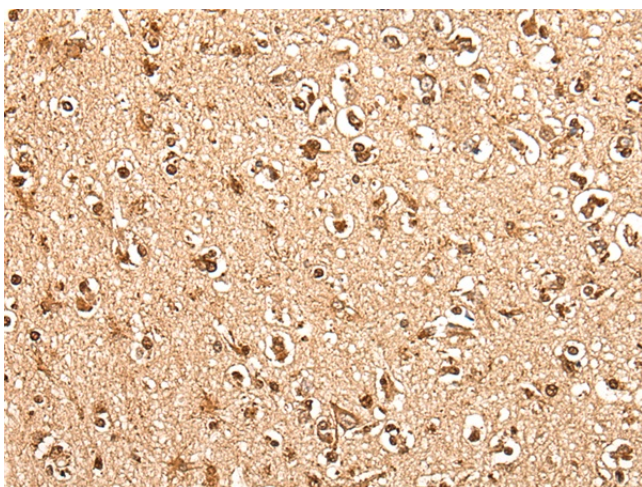
Gel: 6%SDS-PAGE  
Lysate: 40  $\mu$ g  
Lane: Lncap cell  
Primary antibody: TA366923 (RBL2 Antibody) at dilution 1/200  
Secondary antibody: Goat anti rabbit IgG at 1/8000 dilution  
Exposure time: 4 minutes



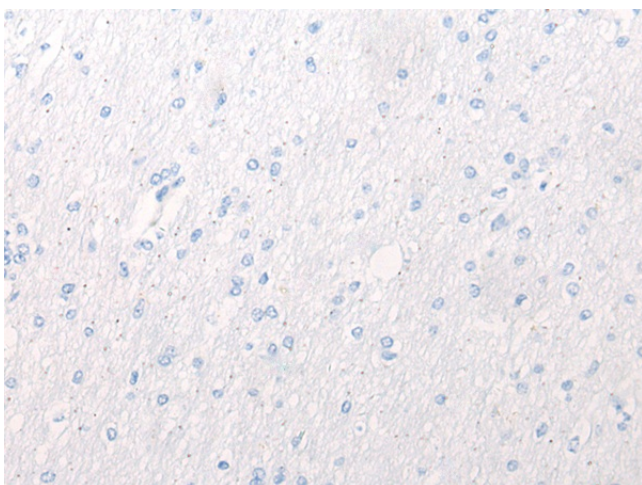
Immunohistochemistry of paraffin-embedded Human lung cancer tissue using TA366923 (RBL2 Antibody) at dilution 1/40 (Original magnification:  $\times$ 200)



Immunohistochemistry of paraffin-embedded Human lung cancer tissue using TA366923 (RBL2 Antibody) at dilution 1/40, treated with synthetic peptide. (Original magnification:  $\times 200$ )



Immunohistochemistry of paraffin-embedded Human brain tissue using TA366923 (RBL2 Antibody) at dilution 1/40 (Original magnification:  $\times 200$ )



Immunohistochemistry of paraffin-embedded Human brain tissue using TA366923 (RBL2 Antibody) at dilution 1/40, treated with synthetic peptide. (Original magnification:  $\times 200$ )