

## Product datasheet for **TA366920S**

### PKC alpha (PRKCA) Rabbit Polyclonal Antibody

#### Product data:

Product Type:	Primary Antibodies
Applications:	WB
Recommended Dilution:	WB: 500-2000 WB positive control: Jurkat and NIH/3T3 cells
Reactivity:	Human, Mouse, Rat
Host:	Rabbit
Isotype:	IgG
Clonality:	Polyclonal
Immunogen:	Synthetic peptide of human PRKCA
Formulation:	pH7.4 PBS, 0.05% NaN <sub>3</sub> , 40% Glycerol
Purification:	Antigen affinity purification
Conjugation:	Unconjugated
Storage:	Store at -20°C.
Stability:	1 year
Predicted Protein Size:	77 kDa
Gene Name:	protein kinase C alpha
Database Link:	<a href="#">Entrez Gene 5578 Human P17252</a>

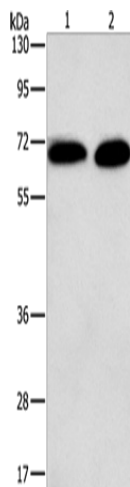
**Background:** Protein kinase C (PKC) is a family of serine- and threonine-specific protein kinases that can be activated by calcium and the second messenger diacylglycerol. PKC family members phosphorylate a wide variety of protein targets and are known to be involved in diverse cellular signaling pathways. PKC family members also serve as major receptors for phorbol esters, a class of tumor promoters. Each member of the PKC family has a specific expression profile and is believed to play a distinct role in cells. The protein encoded by this gene is one of the PKC family members. This kinase has been reported to play roles in many different cellular processes, such as cell adhesion, cell transformation, cell cycle checkpoint, and cell volume control. Knockout studies in mice suggest that this kinase may be a fundamental regulator of cardiac contractility and Ca<sup>2+</sup> handling in myocytes.



[View online »](#)

Synonyms: AAG6; MGC129900; MGC129901; PKC-A; PKC-alpha; PKCA; PRKACA

### Product images:



Gel: 10%SDS-PAGE  
Lysate: 40 µg  
Lane 1-2: Jurkat cells  
NIH/3T3 cells  
Primary antibody: [TA366920] (PRKCA Antibody)  
at dilution 1/500  
Secondary antibody: Goat anti rabbit IgG at  
1/8000 dilution  
Exposure time: 1 minute