

## Product datasheet for **TA366916**

### LIN28B Rabbit Polyclonal Antibody

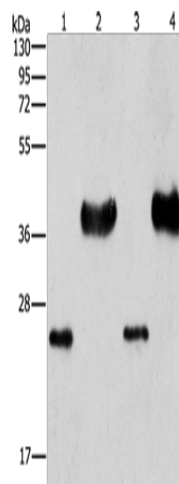
#### Product data:

Product Type:	Primary Antibodies
Applications:	WB
Recommended Dilution:	WB: 500-2000 WB positive control: Mouse liver tissue and k562 cells, hela and 293T cells
Reactivity:	Human, Mouse
Host:	Rabbit
Isotype:	IgG
Clonality:	Polyclonal
Immunogen:	Synthetic peptide of human LIN28B
Formulation:	pH7.4 PBS, 0.05% NaN <sub>3</sub> , 40% Glycerol
Concentration:	lot specific
Purification:	Antigen affinity purification
Conjugation:	Unconjugated
Storage:	Store at -20°C.
Stability:	1 year
Predicted Protein Size:	27 kDa
Gene Name:	lin-28 homolog B
Database Link:	<a href="#">Entrez Gene 389421 Human Q6ZN17</a>
Background:	The protein encoded by this gene belongs to the lin-28 family, which is characterized by the presence of a cold-shock domain and a pair of CCHC zinc finger domains. This gene is highly expressed in testis, fetal liver, placenta, and in primary human tumors and cancer cell lines. It is negatively regulated by microRNAs that target sites in the 3' UTR, and overexpression of this gene in primary tumors is linked to the repression of let-7 family of microRNAs and derepression of let-7 targets, which facilitates cellular transformation.
Synonyms:	CSDD2; FLJ16517; Lin-28.2



[View online »](#)

## Product images:



Gel: 10%SDS-PAGE

Lysate: 40  $\mu$ g

Lane 1-4: Mouse liver tissue

k562 cells

hela cells

293T cells

Primary antibody: TA366916 (LIN28B Antibody) at dilution 1/550

Secondary antibody: Goat anti rabbit IgG at 1/8000 dilution

Exposure time: 1 minute