

Product datasheet for **TA366913S**

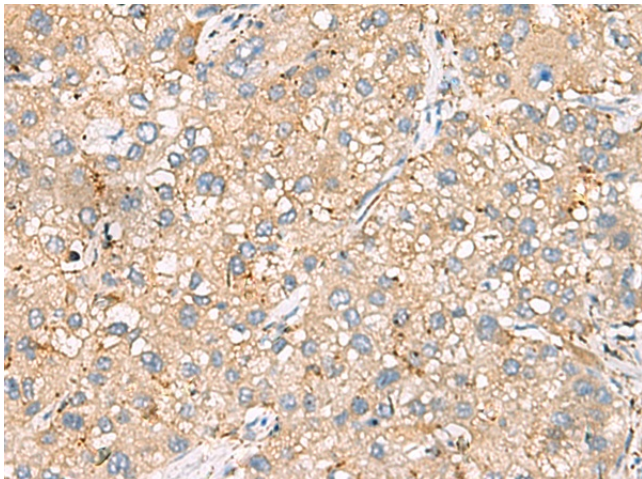
PIWIL3 Rabbit Polyclonal Antibody

Product data:

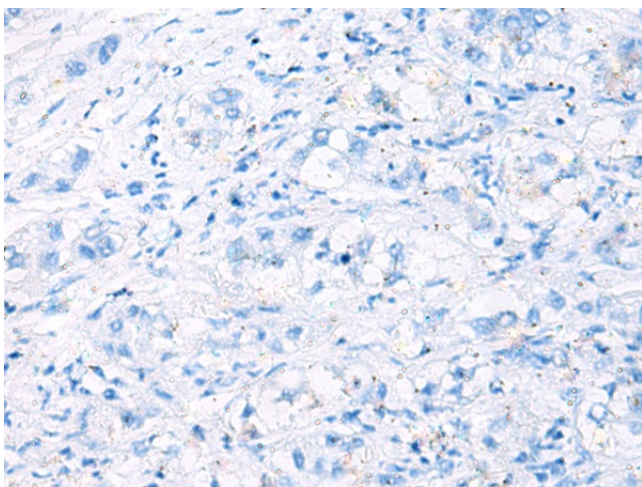
Product Type:	Primary Antibodies
Applications:	IHC
Recommended Dilution:	IHC: 50-100 Positive control: Human liver cancer Predicted cell location: Cytoplasm
Reactivity:	Human
Host:	Rabbit
Isotype:	IgG
Clonality:	Polyclonal
Immunogen:	Synthetic peptide of human PIWIL3
Formulation:	pH7.4 PBS, 0.05% NaN ₃ , 40% Glycerol
Purification:	Antigen affinity purification
Conjugation:	Unconjugated
Storage:	Store at -20°C.
Stability:	1 year
Gene Name:	piwi like RNA-mediated gene silencing 3
Database Link:	Entrez Gene 440822 Human Q7Z3Z3
Background:	This gene encodes a member of the PIWI subfamily of Argonaute family proteins. This subfamily of proteins contains a PAZ domain, found in proteins involved in RNA-mediated gene silencing, and a C-terminal Piwi domain. The encoded protein is thought to function in maintenance of germline cells. Multiple transcript variants encoding different isoforms have been found for this gene.
Synonyms:	HIWI3



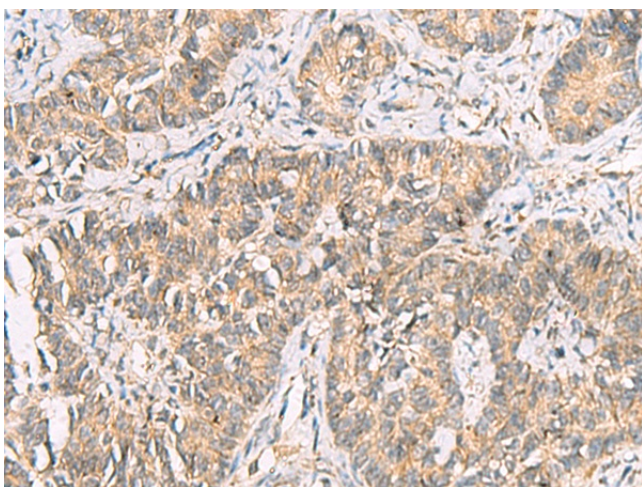
[View online »](#)

Product images:

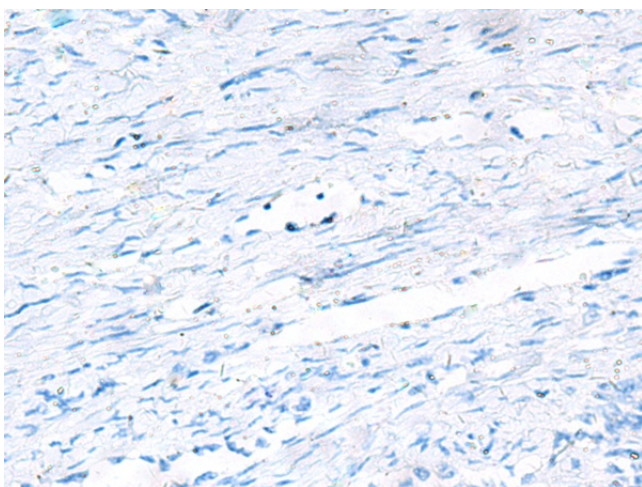
Immunohistochemistry of paraffin-embedded Human liver cancer tissue using [TA366913] (PIWIL1 Antibody) at dilution 1/30 (Original magnification: ×200)



Immunohistochemistry of paraffin-embedded Human liver cancer tissue using [TA366913] (PIWIL1 Antibody) at dilution 1/30, treated with synthetic peptide. (Original magnification: ×200)



Immunohistochemistry of paraffin-embedded Human ovarian cancer tissue using [TA366913] (PIWIL1 Antibody) at dilution 1/30 (Original magnification: ×200)



Immunohistochemistry of paraffin-embedded Human ovarian cancer tissue using [TA366913] (PIWIL1 Antibody) at dilution 1/30, treated with synthetic peptide. (Original magnification: ×200)