

Product datasheet for **TA366911**

ART4 Rabbit Polyclonal Antibody

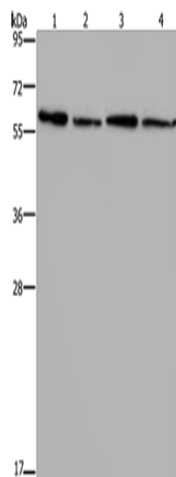
Product data:

Product Type:	Primary Antibodies
Applications:	IHC, WB
Recommended Dilution:	WB: 500-2000 WB positive control: Mouse kidney, liver, heart and brain tissue IHC: 25-100 Positive control: Human cervical cancer Predicted cell location: Cytoplasm
Reactivity:	Human, Mouse
Host:	Rabbit
Isotype:	IgG
Clonality:	Polyclonal
Immunogen:	Synthetic peptide of human ART4
Formulation:	pH7.4 PBS, 0.05% NaN ₃ , 40% Glycerol
Concentration:	lot specific
Purification:	Antigen affinity purification
Conjugation:	Unconjugated
Storage:	Store at -20°C.
Stability:	1 year
Predicted Protein Size:	36 kDa
Gene Name:	ADP-ribosyltransferase 4 (Dombrock blood group)
Database Link:	Entrez Gene 420 Human Q93070
Background:	This gene encodes a protein that contains a mono-ADP-ribosylation (ART) motif. It is a member of the ADP-ribosyltransferase gene family but enzymatic activity has not been demonstrated experimentally. Antigens of the Dombrock blood group system are located on the gene product, which is glycosylphosphatidylinositol-anchored to the erythrocyte membrane. Allelic variants, some of which lead to adverse transfusion reactions, are known.
Synonyms:	CD297; DO; DOK1



[View online »](#)

Product images:



Gel: 10%SDS-PAGE

Lysate: 40 µg

Lane 1-4: Mouse kidney tissue

Mouse liver tissue

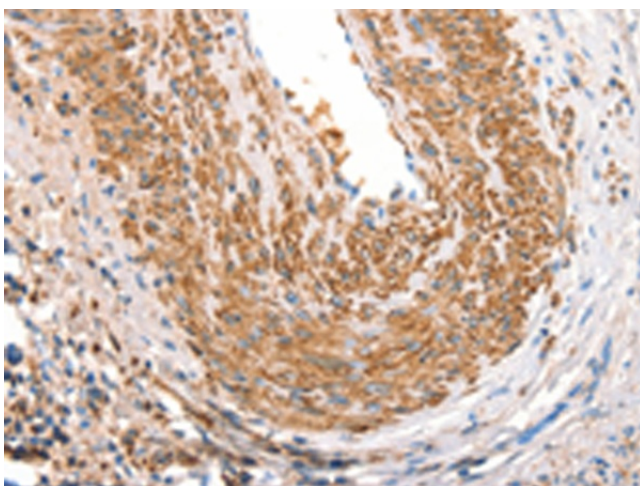
Mouse heart tissue

Mouse brain tissue

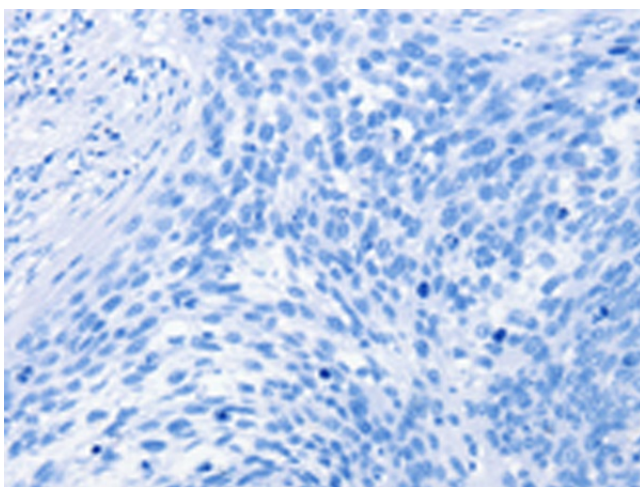
Primary antibody: TA366911 (ART4 Antibody) at dilution 1/667

Secondary antibody: Goat anti rabbit IgG at 1/8000 dilution

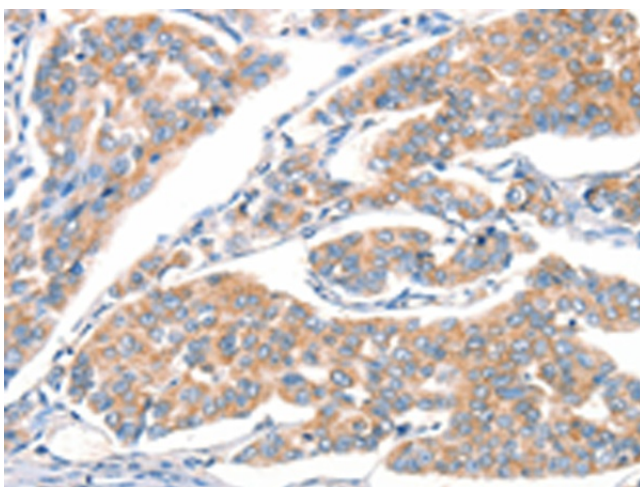
Exposure time: 2 minutes



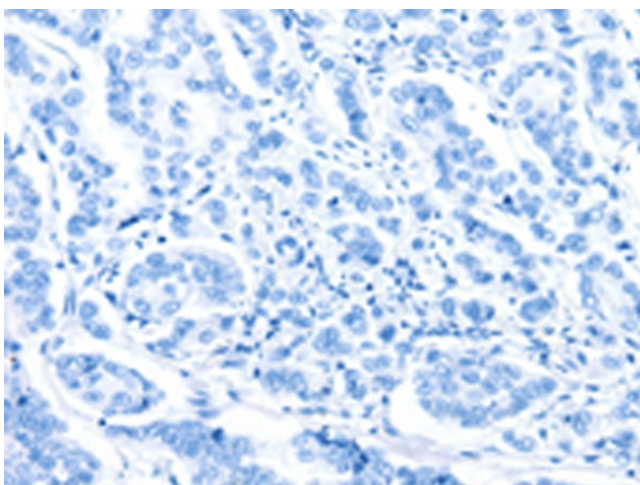
Immunohistochemistry of paraffin-embedded Human cervical cancer tissue using TA366911 (ART4 Antibody) at dilution 1/30 (Original magnification: ×200)



Immunohistochemistry of paraffin-embedded Human cervical cancer tissue using TA366911 (ART4 Antibody) at dilution 1/30, treated with synthetic peptide. (Original magnification: ×200)



Immunohistochemistry of paraffin-embedded Human breast cancer tissue using TA366911 (ART4 Antibody) at dilution 1/30 (Original magnification: ×200)



Immunohistochemistry of paraffin-embedded Human breast cancer tissue using TA366911 (ART4 Antibody) at dilution 1/30, treated with synthetic peptide. (Original magnification: ×200)