

Product datasheet for **TA366893S**

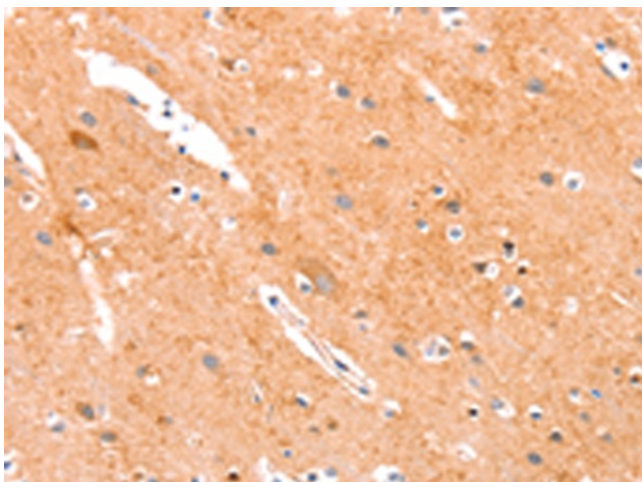
ANKZF1 Rabbit Polyclonal Antibody

Product data:

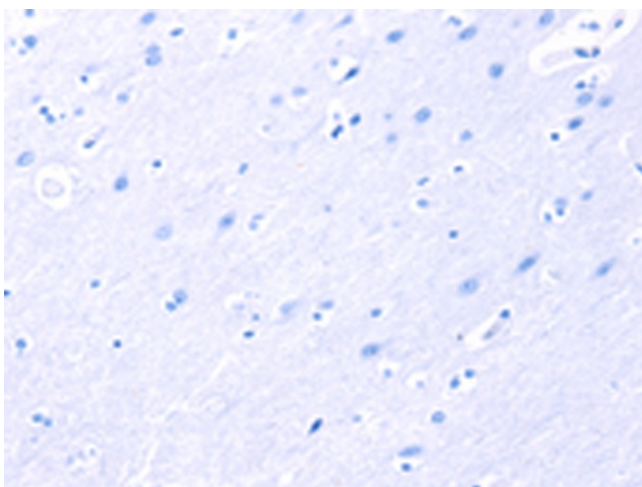
Product Type:	Primary Antibodies
Applications:	IHC
Recommended Dilution:	IHC: 25-100 Positive control: Human brain Predicted cell location: Cytoplasm
Reactivity:	Human, Rat
Host:	Rabbit
Isotype:	IgG
Clonality:	Polyclonal
Immunogen:	Synthetic peptide of human ANKZF1
Formulation:	pH7.4 PBS, 0.05% NaN ₃ , 40% Glycerol
Purification:	Antigen affinity purification
Conjugation:	Unconjugated
Storage:	Store at -20°C.
Stability:	1 year
Gene Name:	ankyrin repeat and zinc finger domain containing 1
Database Link:	Entrez Gene 55139 Human Q9H8Y5
Background:	Zinc-finger proteins contain DNA-binding domains and have a wide variety of functions, most of which encompass some form of transcriptional activation or repression. The majority of zinc-finger proteins contain a Krüppel-type DNA binding domain and a KRAB domain, which is thought to interact with KAP1, thereby recruiting histone modifying proteins. ANKZF1 (ankyrin repeat and zinc finger domain containing 1), also known as ZNF744, is 726 amino acids in length and lacks a KRAB domain but contains one C2H2-type zinc finger and two ANK repeats. The gene encoding ANKZF1 localizes to chromosome 2.
Synonyms:	FLJ10415; FLJ13144; ZNF744



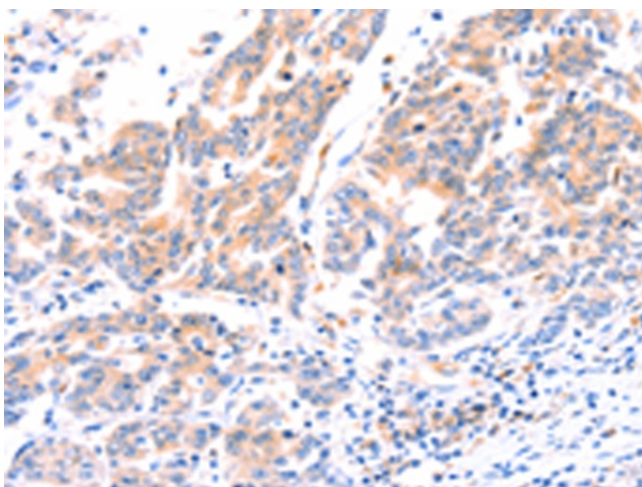
[View online »](#)

Product images:

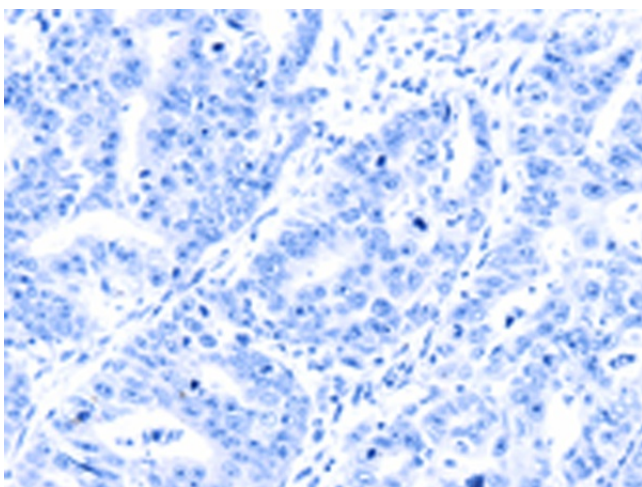
Immunohistochemistry of paraffin-embedded Human brain tissue using [TA366893] (ANKZF1 Antibody) at dilution 1/35 (Original magnification: $\times 200$)



Immunohistochemistry of paraffin-embedded Human brain tissue using [TA366893] (ANKZF1 Antibody) at dilution 1/35, treated with synthetic peptide. (Original magnification: $\times 200$)



Immunohistochemistry of paraffin-embedded Human gastric cancer tissue using [TA366893] (ANKZF1 Antibody) at dilution 1/35 (Original magnification: $\times 200$)



Immunohistochemistry of paraffin-embedded Human gastric cancer tissue using [TA366893] (ANKZF1 Antibody) at dilution 1/35, treated with synthetic peptide. (Original magnification: $\times 200$)