

## Product datasheet for **TA366890S**

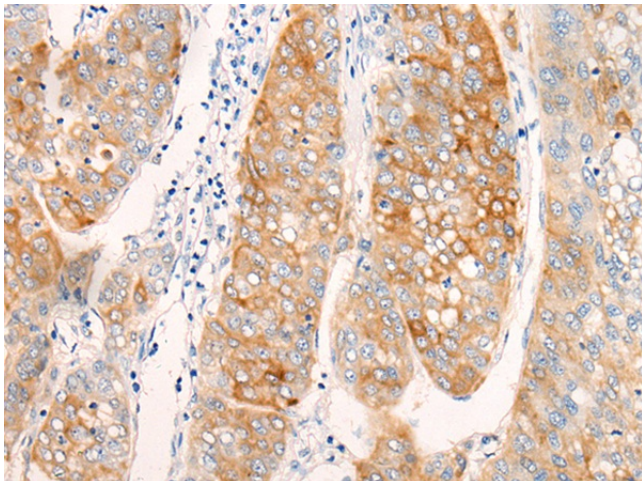
### AMID (AIFM2) Rabbit Polyclonal Antibody

#### Product data:

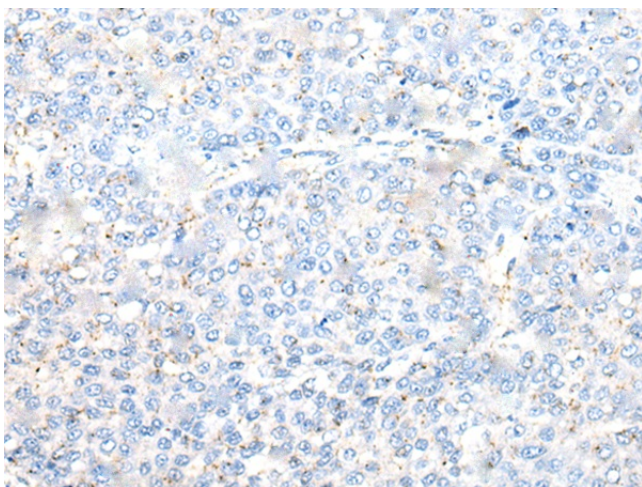
Product Type:	Primary Antibodies
Applications:	IHC
Recommended Dilution:	IHC: 20-100 Positive control: Human liver cancer Predicted cell location: Cytoplasm and Cell membrane
Reactivity:	Human, Mouse
Host:	Rabbit
Isotype:	IgG
Clonality:	Polyclonal
Immunogen:	Synthetic peptide of human AIFM2
Formulation:	pH7.4 PBS, 0.05% NaN <sub>3</sub> , 40% Glycerol
Purification:	Antigen affinity purification
Conjugation:	Unconjugated
Storage:	Store at -20°C.
Stability:	1 year
Gene Name:	apoptosis inducing factor, mitochondria associated 2
Database Link:	<a href="#">Entrez Gene 84883 Human</a> <a href="#">Q9BRQ8</a>
Background:	This gene encodes a flavoprotein oxidoreductase that binds single stranded DNA and is thought to contribute to apoptosis in the presence of bacterial and viral DNA. The expression of this gene is also found to be induced by tumor suppressor protein p53 in colon cancer cells.
Synonyms:	5430437E11Rik; AMID; FLJ14497; OTTHUMP00000019740; PRG3; RP11-367H5.2



[View online »](#)

**Product images:**

Immunohistochemistry of paraffin-embedded Human liver cancer tissue using [TA366890] (AIFM2 Antibody) at dilution 1/30 (Original magnification:  $\times 200$ )



Immunohistochemistry of paraffin-embedded Human liver cancer tissue using [TA366890] (AIFM2 Antibody) at dilution 1/30, treated with synthetic peptide. (Original magnification:  $\times 200$ )