

## Product datasheet for **TA366886**

### ADAMTS15 Rabbit Polyclonal Antibody

#### Product data:

Product Type:	Primary Antibodies
Applications:	IHC, WB
Recommended Dilution:	WB: 500-2000 WB positive control: 293T, MCF-7, PC-3 cell lysates IHC: 50-200 Positive control: Human thyroid cancer Predicted cell location: Cytoplasm
Reactivity:	Human, Mouse
Host:	Rabbit
Isotype:	IgG
Clonality:	Polyclonal
Immunogen:	Synthetic peptide of human ADAMTS15
Formulation:	pH7.4 PBS, 0.05% NaN <sub>3</sub> , 40% Glycerol
Concentration:	lot specific
Purification:	Antigen affinity purification
Conjugation:	Unconjugated
Storage:	Store at -20°C.
Stability:	1 year
Predicted Protein Size:	103 kDa
Gene Name:	ADAM metallopeptidase with thrombospondin type 1 motif 15
Database Link:	<a href="#">Entrez Gene 170689 Human Q8TE58</a>



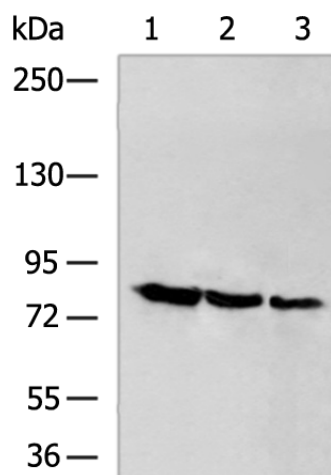
[View online »](#)

**Background:**

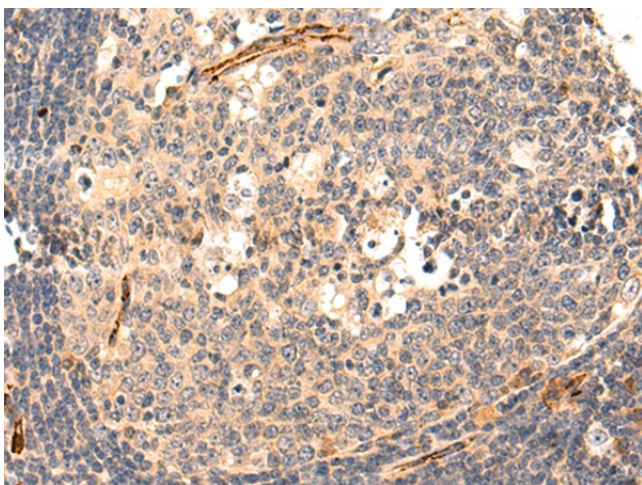
This gene encodes a member of the ADAMTS (a disintegrin and metalloproteinase with thrombospondin motifs) protein family. ADAMTS family members share several distinct protein modules, including a propeptide region, a metalloproteinase domain, a disintegrin-like domain, and a thrombospondin type 1 (TS) motif. Individual members of this family differ in the number of C-terminal TS motifs, and some have unique C-terminal domains. The encoded preproprotein is proteolytically processed to generate the mature enzyme, which may play a role in versican processing during skeletal muscle development. This gene may function as a tumor suppressor in colorectal and breast cancers.

**Synonyms:**

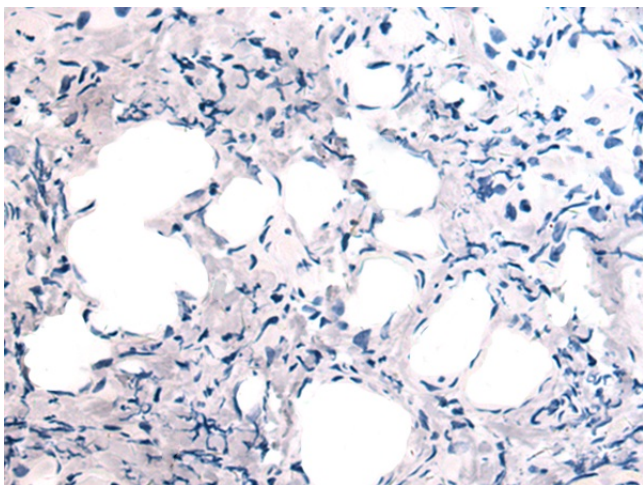
ADAM-TS15; ADAMTS-15; MGC126403

**Product images:**

Gel: 6%SDS-PAGE  
Lysate: 40 µg  
Lane 1-3: 293T  
MCF-7  
PC-3 cell lysates  
Primary antibody: TA366886 (ADAMTS15 Antibody) at dilution 1/400  
Secondary antibody: Goat anti rabbit IgG at 1/5000 dilution  
Exposure time: 5 minutes



Immunohistochemistry of paraffin-embedded Human thyroid cancer tissue using TA366886 (ADAMTS15 Antibody) at dilution 1/50 (Original magnification: ×200)



Immunohistochemistry of paraffin-embedded Human thyroid cancer tissue using TA366886 (ADAMTS15 Antibody) at dilution 1/50, treated with synthetic peptide. (Original magnification: ×200)