

Product datasheet for **TA366883**

Activin Receptor Type IA (ACVR1) Rabbit Polyclonal Antibody

Product data:

Product Type:	Primary Antibodies
Applications:	WB
Recommended Dilution:	WB: 200-1000 WB positive control: NIH/3T3 and HUVEC cell lysates
Reactivity:	Human, Mouse, Rat
Host:	Rabbit
Isotype:	IgG
Clonality:	Polyclonal
Immunogen:	Synthetic peptide of human ACVR1
Formulation:	pH7.4 PBS, 0.05% NaN ₃ , 40% Glycerol
Concentration:	lot specific
Purification:	Antigen affinity purification
Conjugation:	Unconjugated
Storage:	Store at -20°C.
Stability:	1 year
Predicted Protein Size:	57 kDa
Gene Name:	activin A receptor type 1
Database Link:	Entrez Gene 90 Human Q04771



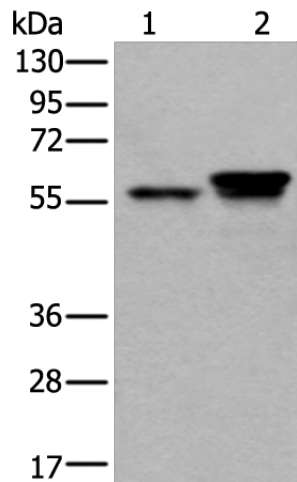
[View online »](#)

Background:

Activins are dimeric growth and differentiation factors which belong to the transforming growth factor-beta (TGF-beta) superfamily of structurally related signaling proteins. Activins signal through a heteromeric complex of receptor serine kinases which include at least two type I (I and IB) and two type II (II and IIB) receptors. These receptors are all transmembrane proteins, composed of a ligand-binding extracellular domain with cysteine-rich region, a transmembrane domain, and a cytoplasmic domain with predicted serine/threonine specificity. Type I receptors are essential for signaling; and type II receptors are required for binding ligands and for expression of type I receptors. Type I and II receptors form a stable complex after ligand binding, resulting in phosphorylation of type I receptors by type II receptors. This gene encodes activin A type I receptor which signals a particular transcriptional response in concert with activin type II receptors. Mutations in this gene are associated with fibrodysplasia ossificans progressive.

Synonyms:

ACTR-I; ACTRI; ACVR1A; ACVRLK2; ALK-2; ALK2; FOP; OTTHUMP00000204604; OTTHUMP00000204626; SKR1; TSR-I; TSRI

Product images:

Gel: 8%SDS-PAGE

Lysate: 40 µg

Lane 1-2: NIH/3T3 and HUVEC cell lysates

Primary antibody: TA366883 (ACVR1 Antibody) at dilution 1/200

Secondary antibody: Goat anti rabbit IgG at 1/8000 dilution

Exposure time: 2 minutes