

## Product datasheet for **TA366877**

### Ly6a Rabbit Polyclonal Antibody

#### Product data:

Product Type:	Primary Antibodies
Applications:	IHC
Recommended Dilution:	IHC: 20-100 Positive control: Mouse liver Predicted cell location: Cell membrane
Reactivity:	Human, Mouse
Host:	Rabbit
Isotype:	IgG
Clonality:	Polyclonal
Immunogen:	Synthetic peptide of mouse Ly6a
Formulation:	pH7.4 PBS, 0.05% NaN <sub>3</sub> , 40% Glycerol
Concentration:	lot specific
Purification:	Antigen affinity purification
Conjugation:	Unconjugated
Storage:	Store at -20°C.
Stability:	1 year
Gene Name:	lymphocyte antigen 6 complex, locus A
Database Link:	<a href="#">Entrez Gene 110454 Mouse P05533</a>

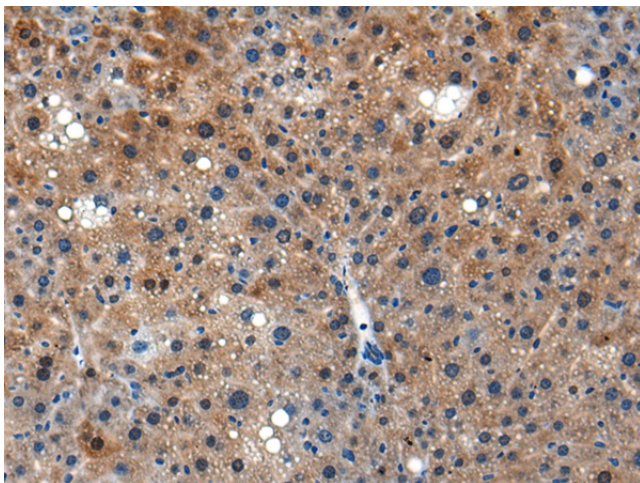
**Background:** The activity of natural killer (NK) cells is regulated by members of multiple receptor families that recognize class I MHC molecules, such as the killer cell inhibitory receptor/leukocyte immunoglobulin-like receptor (KIR/LIR) family and the C-type lectin superfamily. The Ly-6 alloantigens represent a family of phosphatidylinositol anchored proteins that play a role in the process of T lymphocyte activation. Ly-6 expression is commonly induced on T and B lymphocytes after activation by mitogens. Ly-6A/E is a phosphatidylinositol-linked transmembrane member of the Ly-6 family that is produced in humans after 4 weeks of age. ©-interferon and TNF regulate Ly-6A/E at the level of transcription and mRNA stabilization in certain thymocytes and T-cells.



[View online »](#)

Synonyms: Ly-6A.2; Ly-6A/E; Ly-6E.1; Sca-1; Sca1; TAP

**Product images:**



Immunohistochemistry of paraffin-embedded Mouse liver tissue using TA366877 (Ly6a Antibody) at dilution 1/25. (Original magnification:  $\times 200$ )