

Product datasheet for **TA366871**

PAFAH2 Rabbit Polyclonal Antibody

Product data:

Product Type:	Primary Antibodies
Applications:	IHC, WB
Recommended Dilution:	WB: 200-1000 WB positive control: 231 and Jurkat cells IHC: 100-300 Positive control: Human thyroid cancer Predicted cell location: Cytoplasm
Reactivity:	Human, Mouse, Rat
Host:	Rabbit
Isotype:	IgG
Clonality:	Polyclonal
Immunogen:	Synthetic peptide of human PAFAH2
Formulation:	pH7.4 PBS, 0.05% NaN ₃ , 40% Glycerol
Concentration:	lot specific
Purification:	Antigen affinity purification
Conjugation:	Unconjugated
Storage:	Store at -20°C.
Stability:	1 year
Predicted Protein Size:	44 kDa
Gene Name:	platelet activating factor acetylhydrolase 2
Database Link:	Entrez Gene 5051 Human Q99487



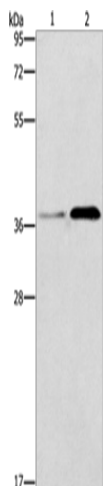
[View online »](#)

Background:

This gene encodes platelet-activating factor acetylhydrolase isoform 2, a single-subunit intracellular enzyme that catalyzes the removal of the acetyl group at the SN-2 position of platelet-activating factor (identified as 1-O-alkyl-2-acetyl-sn-glycerol-3-phosphorylcholine). However, this lipase exhibits a broader substrate specificity than simply platelet activating factor. Two other isoforms of intracellular platelet-activating factor acetylhydrolase exist, and both are multi-subunit enzymes. Additionally, there is a single-subunit serum isoform of this enzyme.

Synonyms:

FLJ26025; HSD-PLA2; OTTHUMP00000008596

Product images:

Gel: 10%SDS-PAGE

Lysate: 40 µg

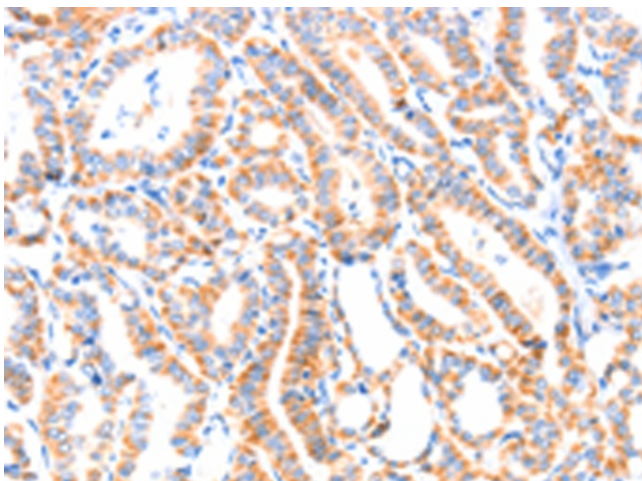
Lane 1-2: 231 cells

Jurkat cells

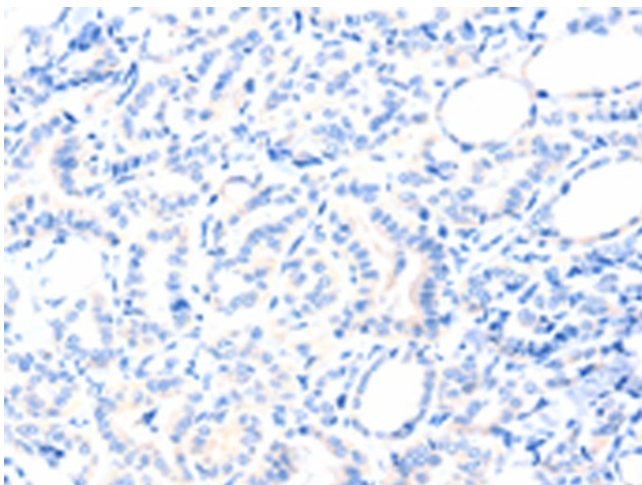
Primary antibody: TA366871 (PAFAH2 Antibody)
at dilution 1/300

Secondary antibody: Goat anti rabbit IgG at
1/8000 dilution

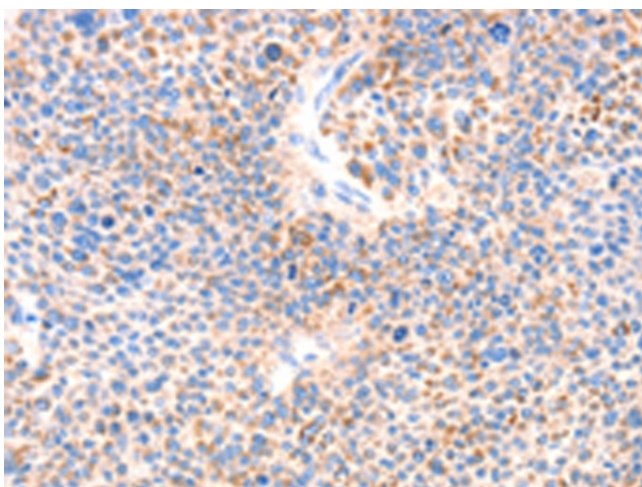
Exposure time: 20 seconds



Immunohistochemistry of paraffin-embedded
Human thyroid cancer tissue using TA366871
(PAFAH2 Antibody) at dilution 1/80 (Original
magnification: x200)



Immunohistochemistry of paraffin-embedded Human thyroid cancer tissue using TA366871 (PAFAH2 Antibody) at dilution 1/80, treated with synthetic peptide. (Original magnification: ×200)



Immunohistochemistry of paraffin-embedded Human liver cancer tissue using TA366871 (PAFAH2 Antibody) at dilution 1/80 (Original magnification: ×200)



Immunohistochemistry of paraffin-embedded Human liver cancer tissue using TA366871 (PAFAH2 Antibody) at dilution 1/80, treated with synthetic peptide. (Original magnification: ×200)